

HOW TO CREATE YOUR SINGING BICYCLES'SYMPHONY ON THE STREET :

You've always dreamt of creating your own symphony. You've heard of early-20th-century-futurists using the street instead of the palette or the theatre.

TODAY YOU'RE THE FUTURIST-CREATOR OF YOUR OWN SYMPHONY!

It's as easy as this: you come along with your bicycle; together we carefully prepare and tune your instrument; you and your colleagues cycle in a long row; the last cyclist overtakes the whole group. The Singing Bicycle's Symphony you create, will delight you and your audience in a wonderful exciting way.

The Singing Bicycles' Symphony is an open air event for at least twelve cyclists with their own bicycles. A workshop of two hours is enough to prepare the instruments:

1. each bic receives a dynamo to generate its own electricity;
2. a loudspeaker is connected to the dynamo;
3. each loudspeaker gets a carefully calculated length of tube in order to obtain a musical scale ;
4. by cycling at different velocities, (the last cyclist overtakes continuously the whole group), glissandi are obtained;
5. by cycling on different pavements, timbre-variation is obtained. Cobble-stones provoke tremolo's, narrow streets reverb and echo the sounds ;
6. every cyclist wears a white overall labeled with the resonant frequency of her/his individual instrument.

LIST OF TECHNICAL REQUIREMENTS

- A minimum of 12 bicycles (let the number be X) with an electricity generator delivering 6 Volts at 3 Watts power output, as used for bicycle light installations / X cyclists-performers
- X loudspeakers with characteristics as follows:
Impedance : 15 Ohms minimum - 25 Ohms maximum
Power rating: 3 Watts minimum - 10 Watts maximum
Diameter : 105mm (equals 4.1")
- X plastic tubes (sanitary P.V.C., light quality) cut to different lengths as follows : (in inches):
64.4";58.9";58.4";57.8";57.0";56.2";55.0";53.4";52.5";
51.3";49.8";48.0";46.5";45.6";44.7";42.5";40.5";39.7";
38.1";37.0";36.3";35.2";34.6";31.6";
These lengths have been calculated such as to form a scale of just intonation for 24 bicycles/tubes/players.
The diameter of the plastics tube used should be 4" (10 cm).
- Ordinary thin flexibel multicore insulated electrical wire;
- Soldering Iron and solder, cutting pliers, flatnose pliers, stripping pliers, a pair of cissors, screwdrivers;
- 1 large roll of very strong heavy duty sticky-tape, width ca. 2"
- a toolkit for standard bicycle repair.

LOGOS, moniek darge & godfried-
willem raes / 091/23.80.89
KONGOSTRAAT 35 B-9000 GENT BELGIUM

1980 : European creation of SINGING BICYCLES
1980-1986: performances in many European Cities
1985-sept: ITALIAN TV (R.A.I.) telecast from Trevignano - ROME

BUROFAX - TELEFAX NR. 212. 582. 4525

CHARLES MORROW ASSOCIATES, INC.

870 SEVENTH AVENUE

28th FLOOR

NY NY 10019

U.S.A.

To: ANDY CEPLOE &
CHARLIE MORROW

(press comments follow by letter)
- IN ITALIAN -

THE NEW WILDERNESS FOUNDATION, in association with FUSION ARTS and the EXPERIMENTAL INTERMEDIA FOUNDATION, presents two (2) events:

SINGING BICYCLES TO DREAMLAND

Saturday, October 25, 1986 at SHALOM'S, 57 Stanton St. (corner of Chrystie)

TELEPHONE: 614-0556

1. The SINGING BICYCLE SYMPHONY*, 2-5 P.M., presented by LOGOS DUO from Belgium as their North American premiere. A two hour public workshop concludes with a bicycle tour of Lower Manhattan.
2. DREAM EVENT, 8 P.M. to Dawn, an all-night interaction focusing on the exploration of dreams by artists, poets and musicians.

The SINGING BICYCLE SYMPHONY*(open to the public, just bring a bike), has bicycles fitted with generators, amplifiers and resonating tubes. Their music is varied by the street surface, the environment and the shifting formation of the cyclists. The Performance Tour through Lower Manhattan begins at 57 Stanton St., goes to the Lower East Side Gallery District, across 14th St. to the West Village and Soho, across West Broadway through TriBeCa, Battery Park, Chinatown and back to Stanton St.

The DREAM EVENT, organized by visual artist SHALOM NEUMAN and composer CHARLIE MORROW (with Eve Teitelbaum) uses Neuman's light and sculpture environment and Morrow's event design and music/word continuity. A blending of the new and the ancient, activities include poets reading Dream Text as visual artists create images, musicians inducing dreaming, the telling of waking dream images and the re-telling of dreams from ancient societies.

* Supported with funds from Meet The Composer, Inc.

Founded in 1973, the NEW WILDERNESS FOUNDATION seeks to celebrate the connection between old and new, contemporary artwork and traditional ritual, through live events, publishing and broadcasting. Since 1976, the Foundation has been associated with EAR MAGAZINE OF NEW MUSIC. Its 6th annual broadcast celebration of the Summer Solstice will debut June 21, 1987 on Public Television in the U.S.A. and around the world.

The FUSION ARTS objectives are to break the boundaries between art forms, loosening the delineations between mediums, like an orchestra composed not just of musicians but of musicians, sculptors, poets, dancers, painters, actors and video artists, no one discipline the dominant.

The EXPERIMENTAL INTERMEDIA FOUNDATION, founded in 1969 by intermedia artist Elaine Summers, is dedicated to furthering creation and performance of intermedia works. Under the direction of Phill Niblock, activities include the annual series Concerts By Composers and Intermedia Events.

PARTICIPATING ARTISTS IN THE NEW WILDERNESS/FUSION DREAM EVENT INCLUDE:

- | | | |
|--------------------|----------------------|-------------------|
| Michael Bates | Dorothea Joyce | Tepi Rosen |
| Nicholas Bergery | Ray Kelly | Jenny Rosenbaum |
| Carole Bovoso | Margalit Lubling | Jerome Rothenberg |
| Jim C. | Gloria McLean | Armand Schwerner |
| Michelle Corriel | Charlie Morrow | Shalom |
| Moniek Darge | Phill Niblock | Craig Silver |
| Sandro Dernini | Nanna Nilson | Mark Sloan |
| Emily Evans | Orange | Dmir Strmel |
| Freddy the Dreamer | Elizabeth Panzer | Eve Teitelbaum |
| David Galt | Godfried-Willem Raes | Rick Ulfick |
| Anna Homler | Angela Repellant | Peggy Wachtel |
| Leonard Horowitz | Elizabeth Rogers | Trine Walther |

West

Michael Zwicky



Annex
 & Antiques Market
 every Sunday
 of the Americas
 26th Street
 (6-9)
 212-243-5343

**WAIT TO
 LIVE YOU**

Personalized Bouquet
 Beautiful Exotic
 in the World.

Roses Florist

almost anywhere.
 912-1686
 credit card.

SAFE
 Interflora

AGENCY SERVICE
 Examinations
 SON AVENUE
 EYE CARE

**LENSES, GLASSES
 ED IN 24 HOURS**
 AN KURFIRST
 TOMETRIST
 ADISON AVE.
 & 44TH STREETS
 7-2054

Lopinto, D.D.S.
 Cosmetic Dentistry
 AGENCY SERVICES
 Park South, Suite 40B,
 Park, NY 10019
 212-371-2571



singing bicycles' symphony

on the Street

YOUR

create



**KONGOSTRAAT 35 B - 9000 GENT
BELGIUM**

091.23.80.89 logos

III

DREAM EVENT

LOGO DUO

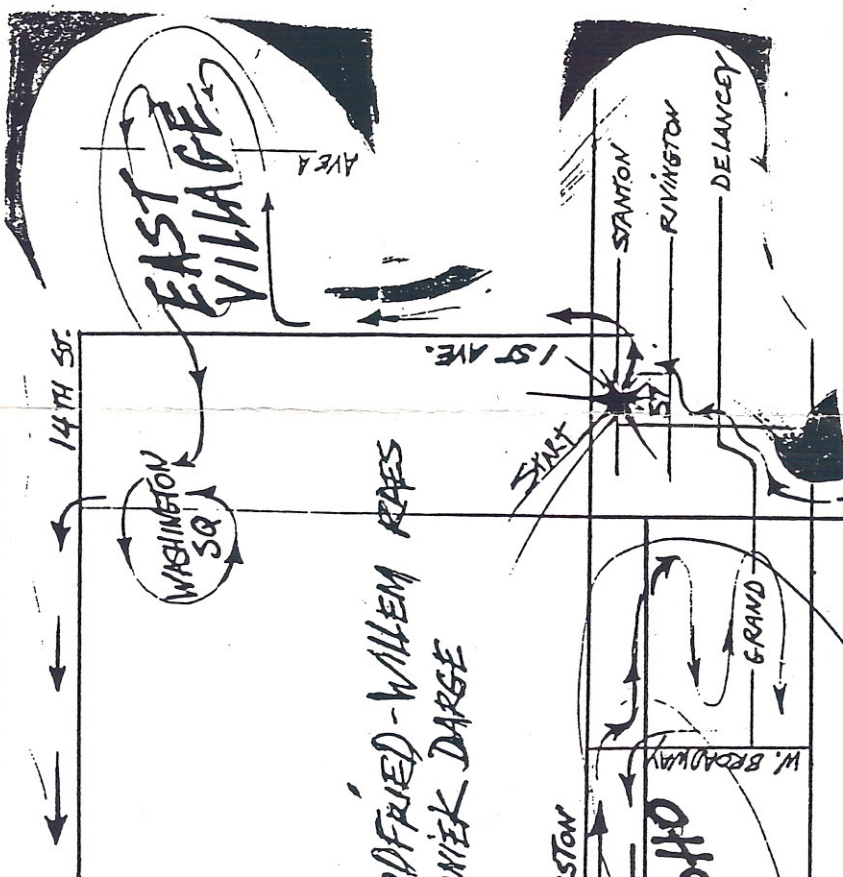
&

NEW WILDERNESS EXPERIMENTAL Bicycles

Presented by FOUNDATION - FUSION ARTS, INTERMEDIA FOUNDATION, 257 1986

supported by Meet the Composer

TO DREAMLAND



AFRIED-WILLEM RAES
MIK DARGE

MIK

giggling

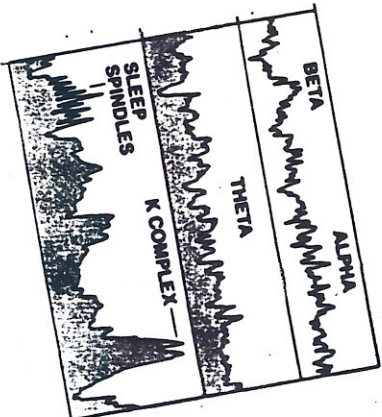
Bicycle Symphony

Heart symbol and stylized signature

DELTA

M-Z and stylized signature

WORKSHOP
2 PM
4 PM
TOUR



DREAM EVENT II

Schedule of Events

EMCEES:

- Michael Bates
- Eve Teitelbaum
- Charlie Morrow
- Shalom

EVENTS OCCURRING THROUGHOUT THE EVENING:

Michael Zwicky will perform a costumed solo (2 minutes) every hour on the hour.

Gloria McLean will be a stationary body both on site and off site. Rick Uffick will perform on synthesizer and sampler both in continuity and as a soloist.

Marc Sloan will perform music both in continuity and as a soloist. Shalom's environment will be both on and off as needed.

Eve Teitelbaum will present verbal phrases for the group. The Ocarina Orchestra and Conch Chorus will perform all evening.

E. Panzer plays harp throughout the night after 10:30.

Michael Goldin will be typing/writing throughout the night.

Phil Rosstek - Nightlong Video Business Dream

THE STAGES OF SLUMBER

- 7:30 - Demo Mo, street music
- 7:30 - Ocarina Conch Chorus
- 8:00 - Michael Zwicky
- 8:15 - Craig Silver and Michele Corriel performance of "The Harmony of The Sticks" - a No Act Play
- 8:30 - Carole Bovoso and Carolee Shneeman performance of a dream duet
- 8:40 - Nanna Nilson choreography of "Physical Memories," with Marlene Lotz dancing and William Dawes' music
- 8:50 - Elizabeth Rogers, poetry, & Margalit Lubling, instant painting
- 8:55 - Charlie Morrow Dream Chant in two parts:
 - a) Singing, not listening to self, observing waking dream in head
 - b) Telling the dream
- 9:00 - Zwicky
- 9:10 - Shalom leads group participation in barking. Marc Sloan performance of solo piece
- 9:15 - COLLECTIVE DREAM
- 9:15 - Michele Corriel, poetry recital of a Dream Text - paragraphs of dreams, one written each day over two weeks
- 9:25 - Jenny Rosenbaum, slides and sound
- 9:35 - Eve Teitelbaum will weave verbal dreams, Carl George will project film
- 9:45 - Richard Moss, slides and sound
- 9:55 - Patricia Burgess, solo on tenor saxophone
- 10:00 - Michael Zwicky
- 10:10 - Sandro Dernini Performance: Eating Art: The Last Capriccio. Accompaniment by Elizabeth Panzer on harp, with a score by Charlie Morrow. This piece comprises 23 performers
- 10:10 - Shalom and Marc Sloan "Pledge Allegiance"
- 10:25 - "Night Visit" -- David Galt on electronic bugle, Michele Coriel as heckler
- 10:35 - Jerome Rothenberg recital of Dream Texts -- a continuous reading mixed in and out for hours
- 10:40 - Gloria McLean performance of Blind Dance/Money Dance
- 10:50 - Patricia Burgess (tenor sax), Charlie Morrow (cornet) duet
- 11:00 - Michael Zwicky
- 11:05 - Dorothea Joyce: Songs, Loneliness, Peggyann Wachtal and Dmir Strme
- 11:10 - Gloria McLean performance of I
- 11:15 - Arleen Schloss and Charlie Morrow
- 11:30 - Moniek Darge reading of Dream Performances by Godfried-William and Tepi Rosen, Random event
- Midnite - Michael Zwicky
- 12:05 - Michael Bates performs original Beginning of a Dream" and "198
- 12:15 - Jim C., poetry
- 12:30 - Dancepiece by Claire Matz, Marc Sloan environment by Shalom
- AFTER MIDNITE
 - Shalom's barking
 - Laurie Edmonds: masks and instant dream
 - Star Spangled Banner presented by Anna Pompassello and Charlie Morrow
 - Anna Henkler, performance music on cello
 - Richard Malone, performance of a SKI performer)
- 1:00 - Michael Zwicky
- 1:05 - Phil Nidlock, 1-hour slide/sound
- 2:00 - Zwicky
- AFTER 2:00:
 - Gloria McLean, Margalit Lubling, Chana Teitelbaum, performance with sculpture
- 2:30 - Poetry, Eve Teitelbaum
- AFTER 2:30 **Maggie Evans**
 - Dorothea Joyce, Peggyann Wachtal, Dm Horowitz, performance
 - Anna Holmer, performance music on cello
- 3:00 - Harp and Ocarina and Synthesizer improvisation, using blended environment

Organization Design by: Charlie Morrow, Shalom Newman, Eve Teitelbaum

future events 614-0556

A GOOD N

$$v = 340 \text{ m/s}$$

eff. lengte	einzelkorrektur $0,62 \times R$		
182 cm	+	3,1 cm	= 185,1
161 cm	+	3,1 cm	= 164,1
156 cm	+	3,1 cm	= 159,1
150 cm	+	3,1 cm	= 153,1
146 cm	+	3,1 cm	= 149,1
135,5	+	3,1	= 138,6
126,5	+	3,1	= 129,6
121,5	+	3,1	= 124,6
115,5	+	3,1	= 118,6
110	+	3,1	= 113,1
103,5	+	3,1	= 106,6
98,5	+	3,1	= 101,6
93,5	+	3,1	= 96,6
85,5	+	3,1	= 88,6

Frequency	Frequency
46 Hz \Rightarrow 163	148
52 Hz	140
53,4 Hz	138
57 Hz \Rightarrow 140	138
61,3 Hz \Rightarrow 138	138
65,6 Hz	138
68,2 Hz \Rightarrow 138	138
71,6 Hz	138
75 Hz \Rightarrow 138	138
79,8 Hz	138
83,6 Hz \Rightarrow 138	138
88 Hz	138
96 Hz \Rightarrow 138	138

$$\frac{f_0}{f_1} = \frac{9}{10}$$

$$f_1 = \frac{10f_0}{9}$$

$$\frac{1}{2} \quad \frac{2}{3} \quad \frac{3}{4} \quad \frac{4}{5}$$

$$0 \text{ cm} - 3,1 = \varphi_{\text{ak}} = 58 \text{ cm}$$

$$4 \text{ ft.} \Rightarrow \varphi_{\text{ak}} = 116$$

 $\frac{1}{1}$

Zaggenteile

120 cm

4 ft.

$$\frac{1}{1} = 116 \text{ cm} \quad 120 \text{ cm}$$

$$\frac{2}{3} = 77 \text{ cm} \quad 80 \text{ cm}$$

$$\frac{3}{4} = 87 \text{ cm} \quad 90 \text{ cm}$$

$$\frac{3}{5} = 70 \text{ cm} \quad 73 \text{ cm}$$

$$\frac{4}{5} = 93 \text{ cm} \quad 96 \text{ cm}$$

$$\frac{5}{6} = 96,6 \text{ cm} \quad 100 \text{ cm}$$

$$\frac{4}{7} = 66,3 \text{ cm} \quad 70 \text{ cm}$$

$$\frac{5}{7} = 82,8 \text{ cm} \quad 86 \text{ cm}$$

$$\frac{6}{7} = 99,4 \text{ cm} \quad 103 \text{ cm}$$

$$\frac{5}{8} = 72,5 \quad 76 \text{ cm}$$

$$\frac{7}{8} = 101,5 \quad 105 \text{ cm}$$

$$\frac{7}{9} = 90,2 \quad 93 \text{ cm}$$

$$\frac{8}{9} = 103 \quad 106 \text{ cm}$$

$$\frac{7}{10} = 81,2 \quad 84 \text{ cm}$$

$$\frac{9}{10} = 104,4 \quad 108 \text{ cm}$$

ZAGEN

1/2 L_q = 61 cm ⇒ L_{ak} = 61 + 3.1 = 64.1 cm 2ft.

1/1 L_q = 125 cm OK L_{ak} = 128 cm OK 4ft.

2/3 = 82 cm OK L_{ak} = 85,3 cm 1x10ft

3/4 = 93 cm OK ak 96 cm OK

3/5 = 74 OK ak 76,8

4/5 = 99,3 cm OK ak. 102,4

5/6 = 103,5 OK 106.6 1x10ft

~~4/7~~ = 70 cm OK 73,3

5/7 = 88,3 OK 91,4

6/7 = 106,6 OK 109,7 OK #1

5/8 = 77 80

7/8 = 109 112

5/9 = 88 OK 71,3 1x10ft

(7/9) = 96,4 99,5

(8/9) = 110,6 113,3

7/10 = 86,5 OK 89,6

9/10 = 112 OK 115,2 OK

6/11 = 66,7 OK 69,8

~~2ft.~~

Rest

51 Hz. grandtoon.

$$f_0 = \frac{\sqrt{\quad}}{4(x + 3,1)}$$

$$x + 3,1 = \frac{\sqrt{\quad}}{4f_0}$$

$$x = \frac{\sqrt{\quad}}{4f_0} - 3,1$$

$$x = \frac{340}{4 \times 51} - 3,1$$

$$= 1,63,5$$

$$\frac{51 \text{ Hz}}{f_{\text{syn.}}} = \frac{2}{3}$$

$$153 = 2f$$

$$f = \frac{153}{2} = 76,5 \text{ Hz.}$$

$$\frac{51 \text{ Hz.}}{f} = \frac{3}{4}$$

$$f = \frac{204}{43}$$

Kwint: 76,5 Hz.

Kwout: 68 Hz.

~~$$\frac{51}{f} = \frac{1}{3}$$
$$f = 153$$~~

[Signature]

$\frac{1}{1} = 51 \text{ Hz}$	1 m 63,5	= bauleypte \varnothing w.
$\frac{1}{2} = 102 \text{ Hz}$	80,2 cm	
$\frac{2}{3} = 76,5 \checkmark$	1 m 08	
$\frac{3}{4} = 68 \checkmark$	1 m 21,9	
$\frac{3}{5} = 85 \checkmark$	96,9 cm.	
$\frac{4}{5} = 63,75 \checkmark$	1 m 30,2	
$\frac{5}{6} = 61,2 \checkmark$	1 m 35,7	
$\frac{4}{7} = 89,25 \checkmark$	92,1 cm	
$\frac{5}{7} = 71,4 \checkmark$	1 m 15,9	
$\frac{6}{7} = 59,5 \checkmark$	1 m 39,7	
$\frac{5}{8} = 81,6 \checkmark$	1 m 01	
$\frac{7}{8} = 58,28 \checkmark$	1 m 42,7	
$\frac{5}{9} = 91,8 \checkmark$	89,5 cm	
$\frac{7}{9} = 65,57 \checkmark$	1 m 26,5	
$\frac{8}{9} = 57,37 \checkmark$	1 m 45	
$\frac{7}{10} = 72,857 \checkmark$	1 m 13,5	
$\frac{9}{10} = 56,66 \checkmark$	1 m 46,9	
$\frac{6}{11} = 93,5 \checkmark$	87,8 cm	
$\frac{7}{11} = 80,14 \checkmark$	1 m 02,9	
$\frac{8}{11} = 70,12 \checkmark$	1 m 18,1	
$\frac{9}{11} = 62,33 \checkmark$	1 m 33,3	
$\frac{10}{11} = 56,1 \checkmark$	1 m 48,4	
$\frac{7}{12} = 87,43 \checkmark$	94,12 cm	
$\frac{11}{12} = 55,64 \checkmark$	1 m 49,7	