

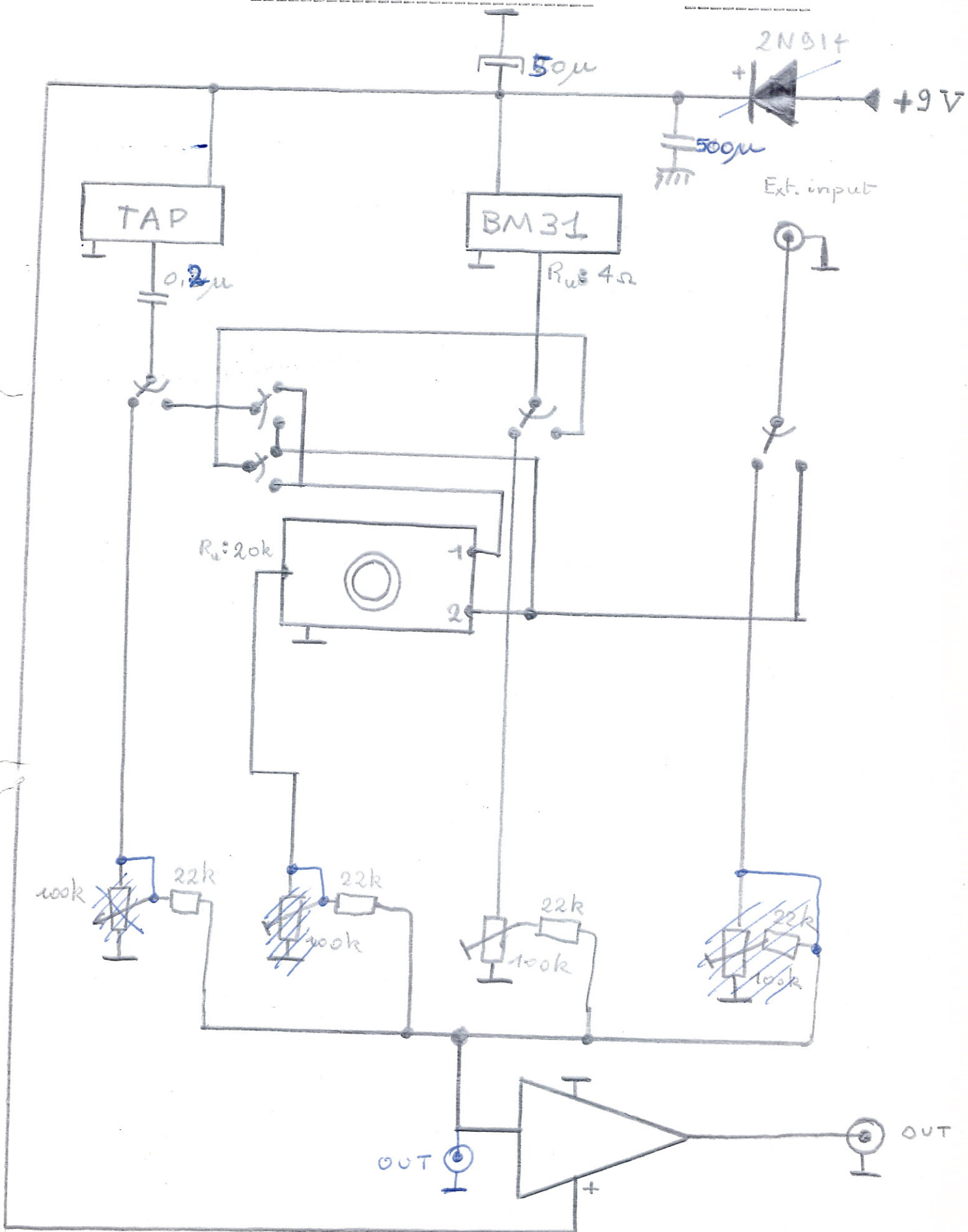
Mini-syntesisen
perkuusie

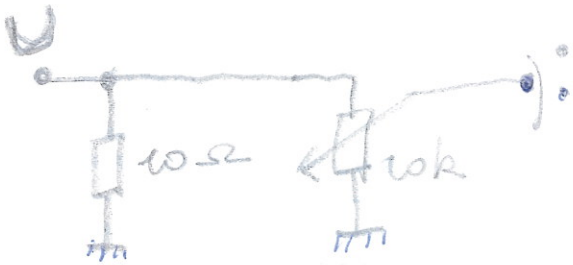
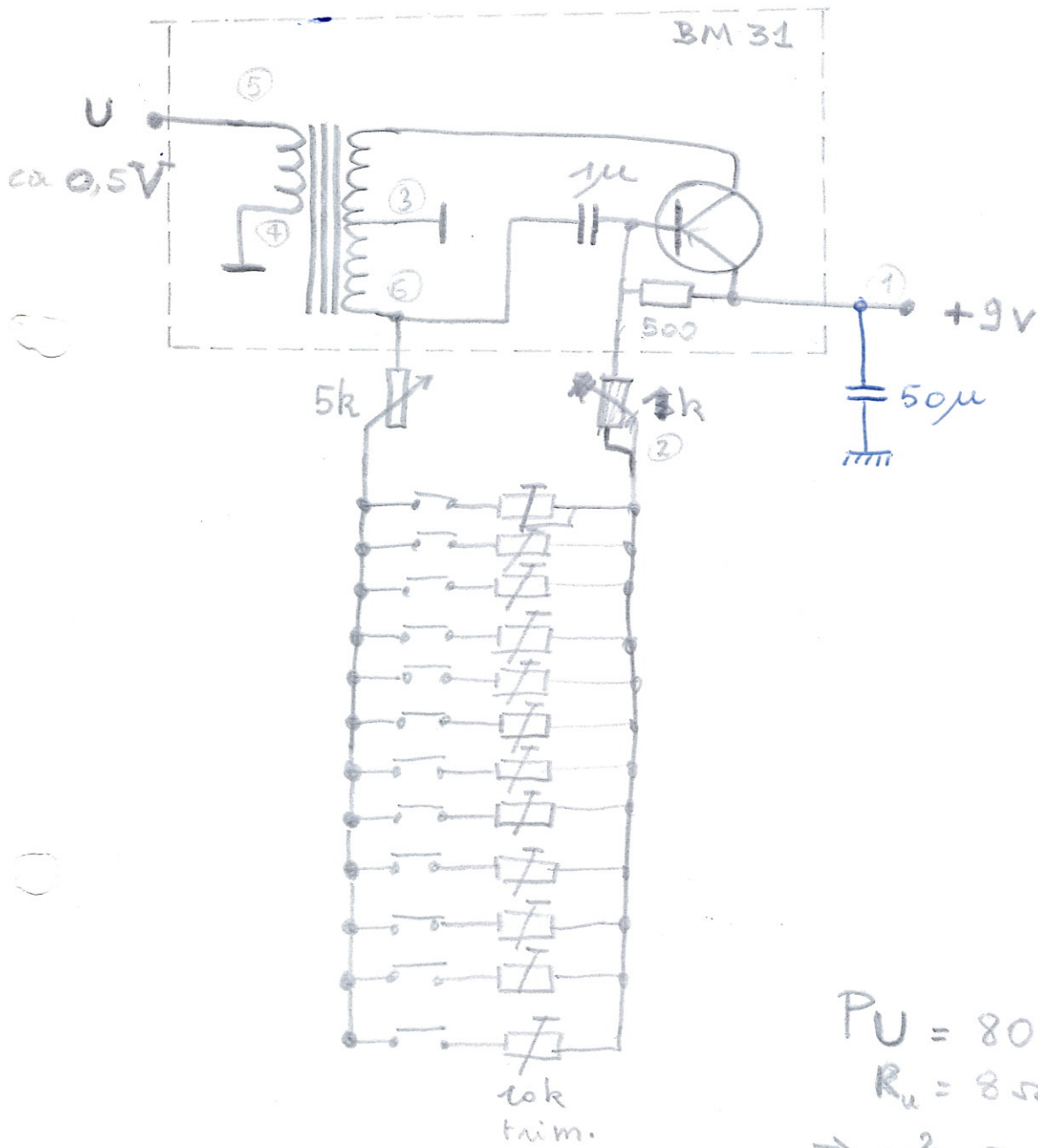
logos

1972

Mini-synthesiser perkussie

BLOKSCHEMA

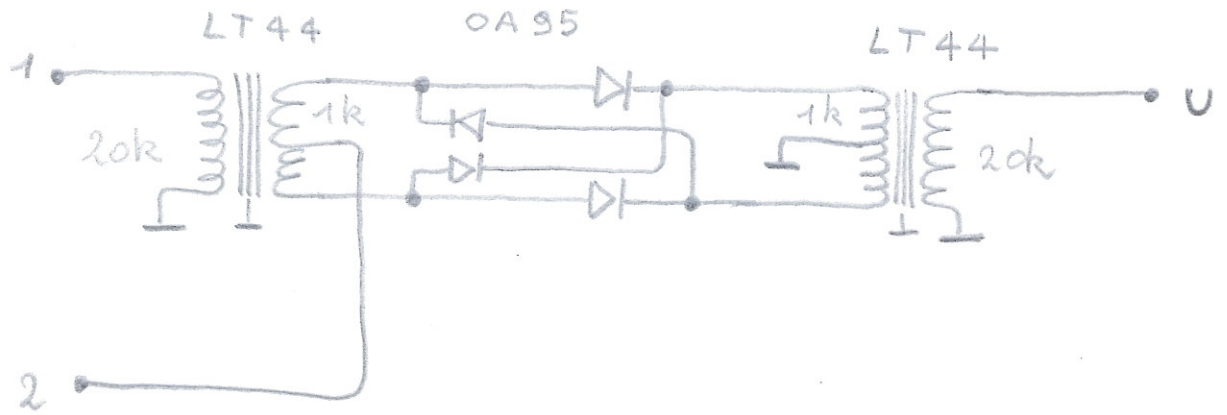




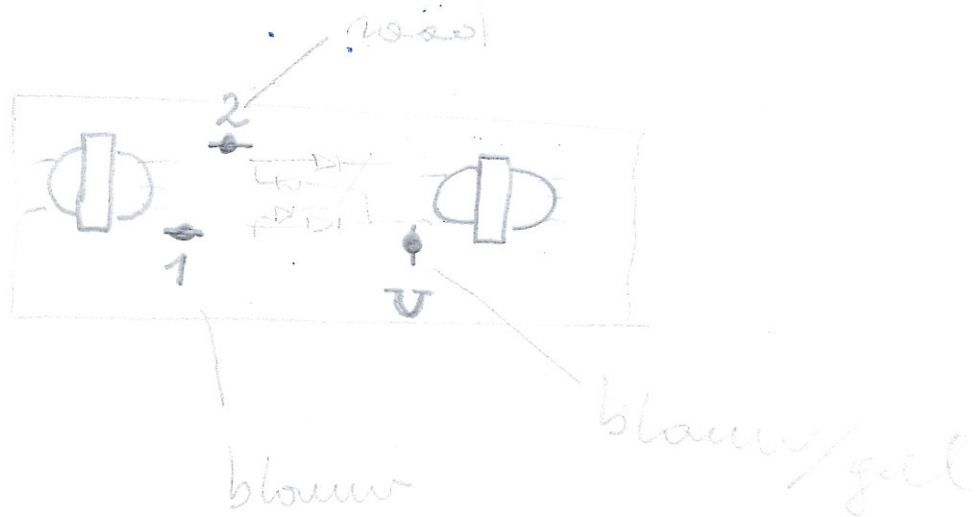
$$\begin{aligned}
 P_u &= 80 \text{ mW} \\
 R_u &= 8 \Omega \\
 \Rightarrow U^2 &= P_u \cdot R_u \left(= U \cdot I \cdot \frac{U}{I} \right) \\
 &= 0,64 \\
 U &= \sqrt{0,64} = 0,8 \text{ V}
 \end{aligned}$$

Mini-synthesiser

RINGMODULATOR



PRINT:

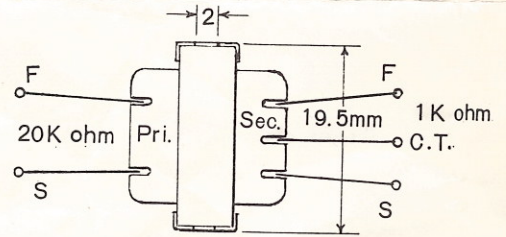




LT.44

TRANSISTOR DRIVER TRANSFORMER

Impedance Ratio: 20K ohm to 1K ohm C.T.



Bottom View

Eagle International[®]

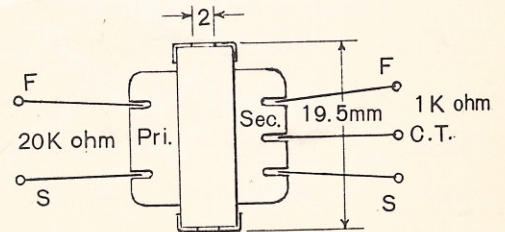
Printed in Japan



LT.44

TRANSISTOR DRIVER TRANSFORMER

Impedance Ratio: 20K ohm to 1K ohm C.T.



Bottom View

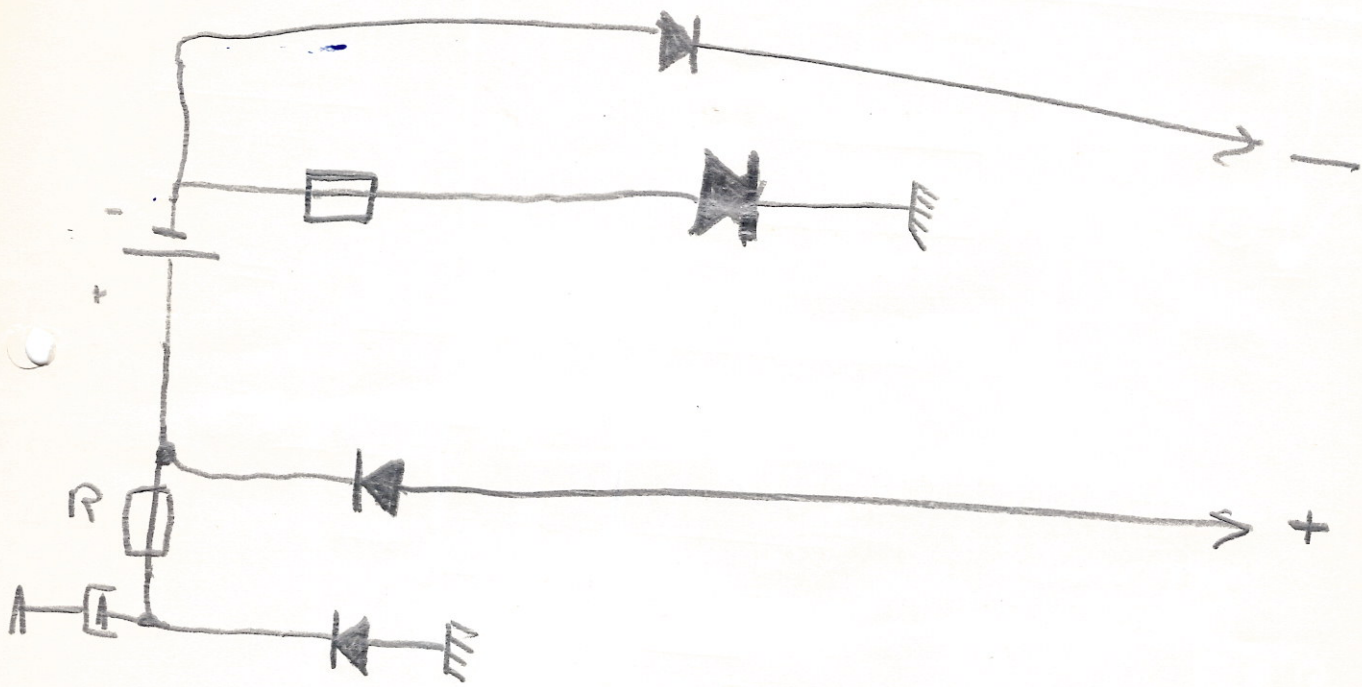
Eagle International[®]

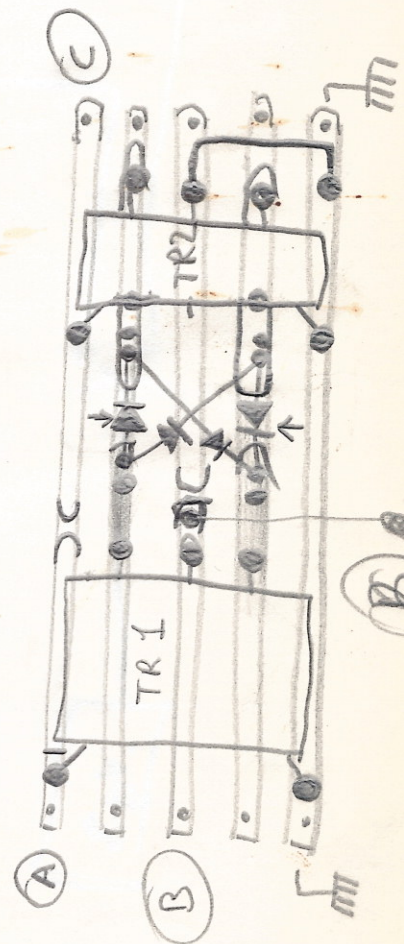
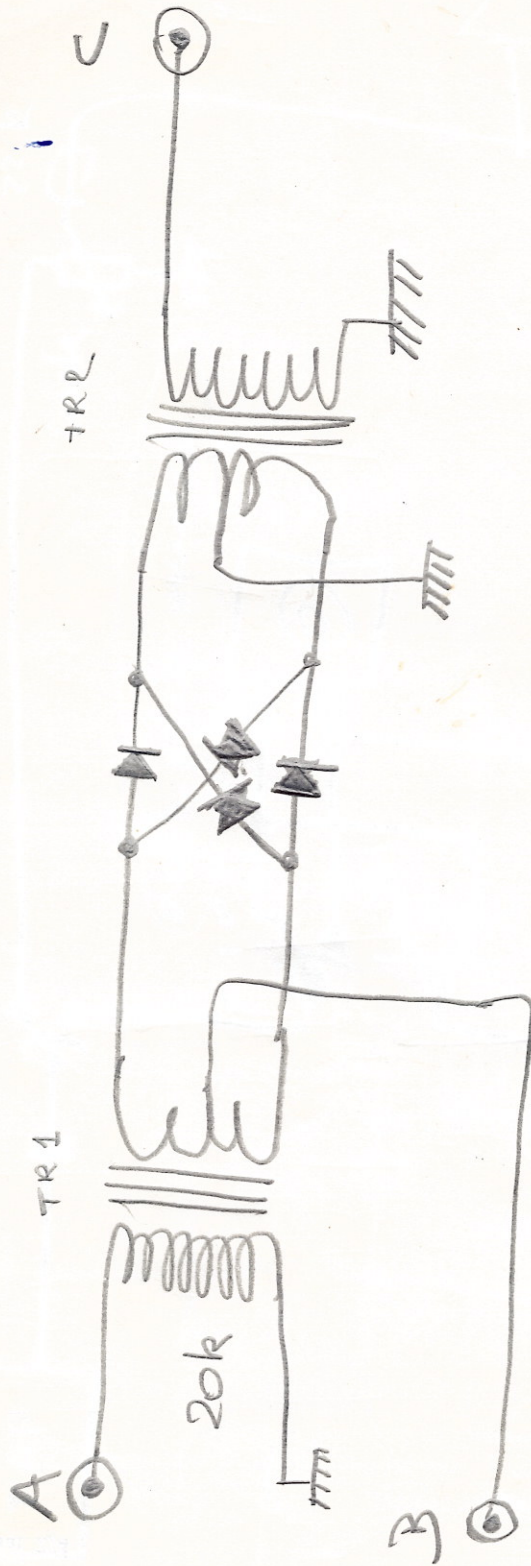
Printed in Japan

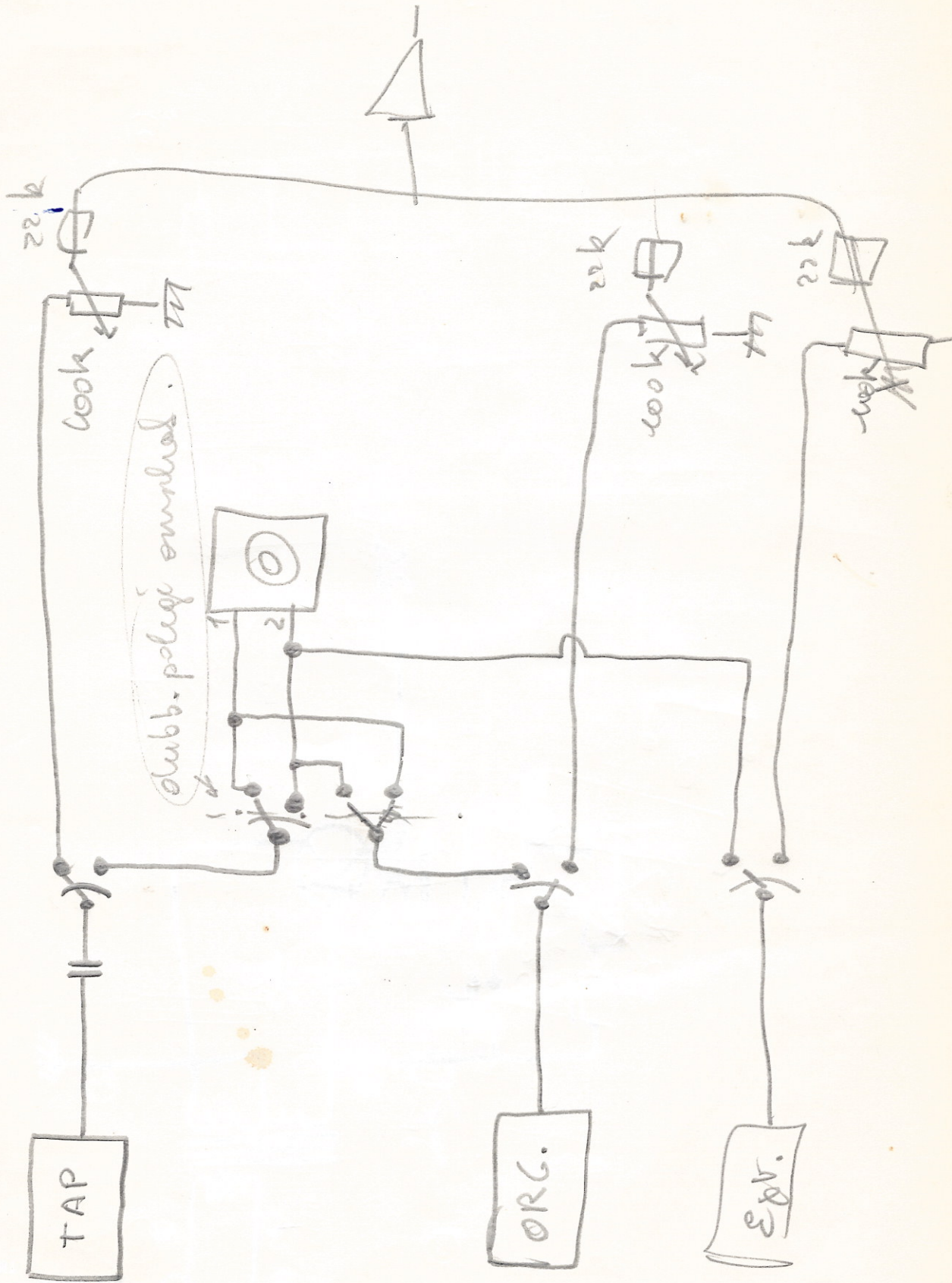
19,-

19,-

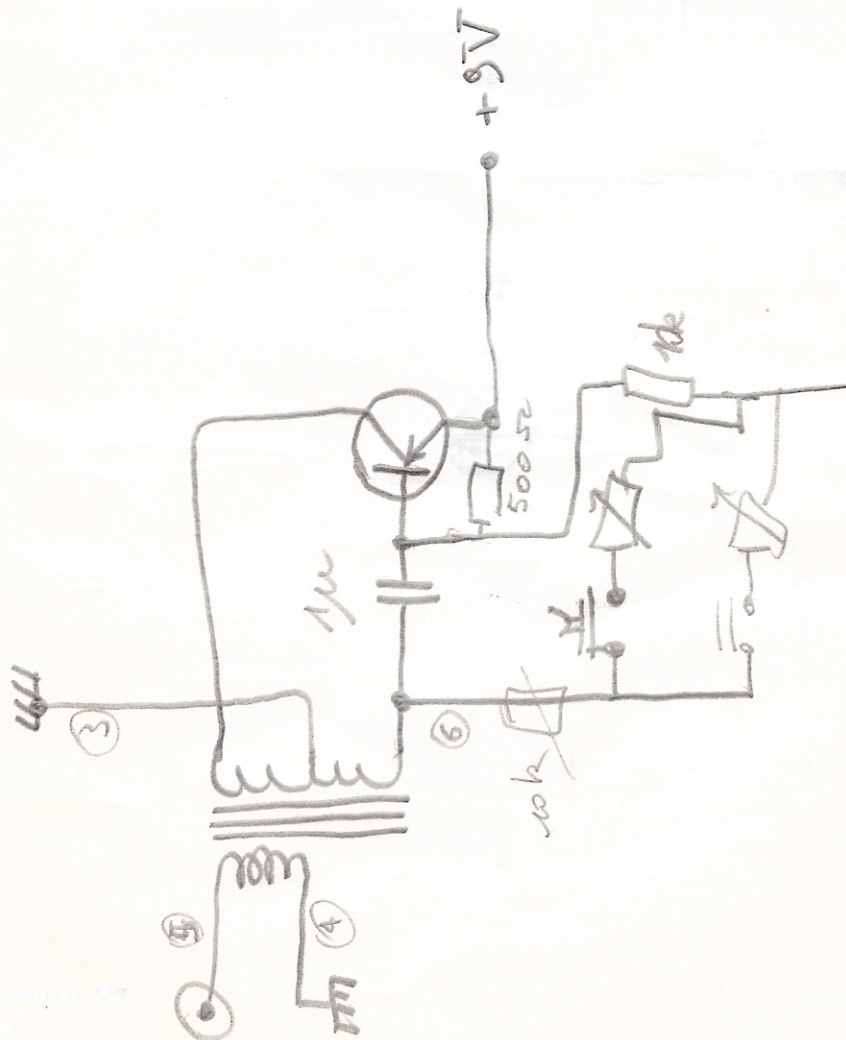
1V
2004 0,5 W
0,0000
50μA

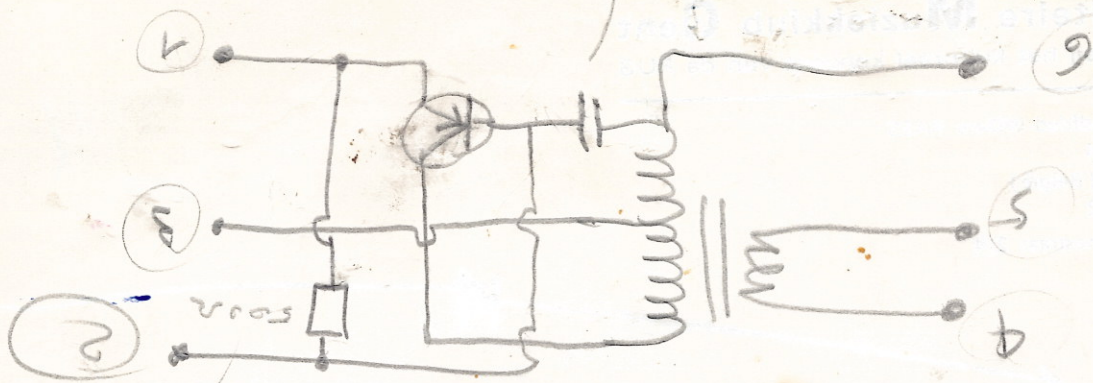




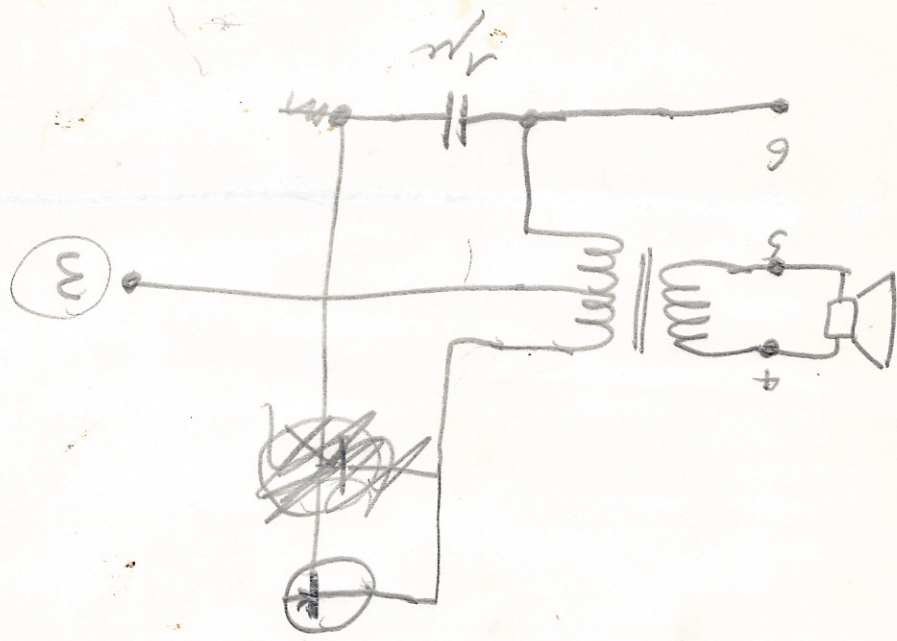


BM 31





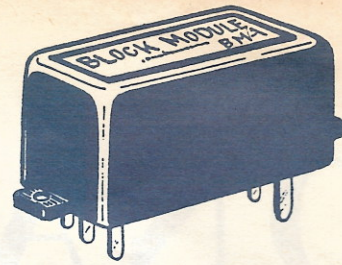
open 1/2 / brown



1/2

TONAL

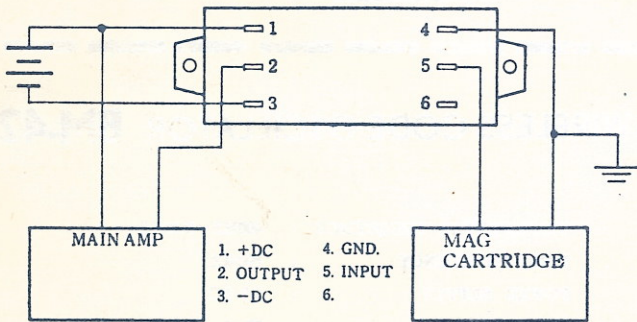
block modules



PHONO PRE-AMPLIFIER

BM-1

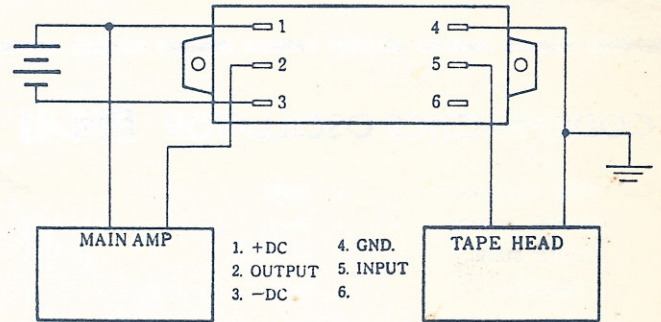
INPUT IMPEDANCE : 100 K Ω
 GAIN : 28 DB
 MAXIMUM OUTPUT : 3 V
 MAXIMUM INPUT : 50 mV
 DISTORTION : 0.15 o/o (at 1 V LEVEL)
 FREQUENCY RESPONSE : RIAA
 POWER SUPPLY : 9 V ~ 12 V DC



TAPE PRE-AMPLIFIER

BM-2

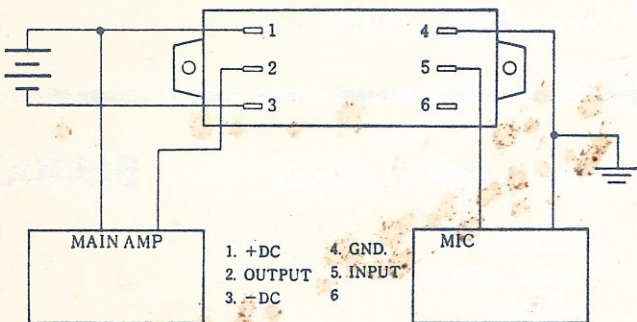
INPUT IMPEDANCE : 100 K Ω
 GAIN : 25 DB
 MAXIMUM OUTPUT : 3 V
 MAXIMUM INPUT : 50 mV
 DISTORTION : 0.15 o/o (at 1 V LEVEL)
 FREQUENCY RESPONSE : NARTB
 POWER SUPPLY : 9 V ~ 12 V DC



MIC PRE-AMPLIFIER

BM-3

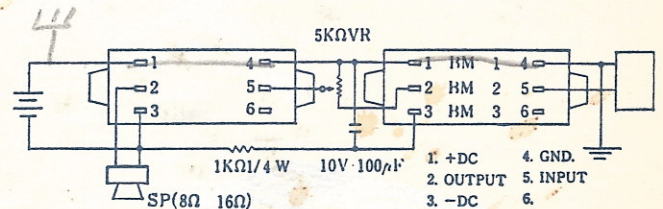
INPUT IMPEDANCE : 100 K Ω
 GAIN : 28 DB
 MAXIMUM OUTPUT : 3 V
 MAXIMUM INPUT : 50 mV
 DISTORTION : 0.15 o/o (at 1 V LEVEL)
 FREQUENCY RESPONSE : 10 HZ ~ 50 K HZ
 POWER SUPPLY : 9 V ~ 12 V DC



POWER AMPLIFIER

BM-4

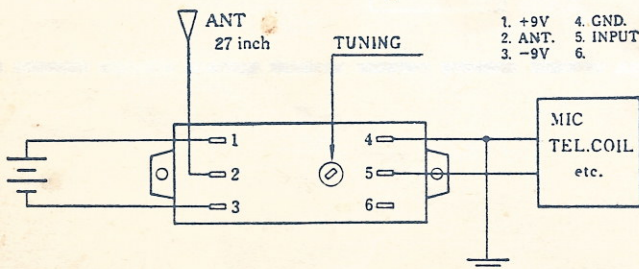
GAIN : 20 DB
 MAXIMUM OUTPUT : 300 mW
 INPUT IMPEDANCE : 1,000 Ω
 DISTORTION : 3% (at OUT 200 mW LEVEL)
 FREQUENCY RESPONSE : 50 HZ ~ 10,000 HZ
 POWER SUPPLY : 9 V DC
 CURRENT : NO SIG. 20 mA MAX OUT 80 mA



FM TRANSMITTER

BM-21

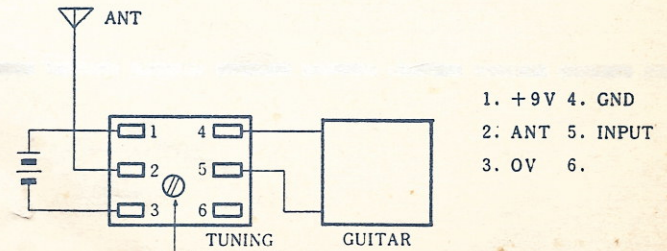
INPUT IMPEDANCE : 5 K Ω
 MAXIMUM INPUT : 3 mV
 MAXIMUM OUTPUT : 5 mW
 TRANSMITTER FREQUENCY : 83 MHz ~ 108 MHz
 POWER SUPPLY : 9 V DC



FM TRANSMITTER FOR GUITAR-AMPLIFIER

BM-22

INPUT IMPEDANCE : 10K
 MAXIMUM INPUT : 100 mV
 MAXIMUM OUTPUT : 5 mW
 TRANSMITTER FREQUENCY : 88 MHz ~ 108 MHz
 POWER SUPPLY : 9 VDC

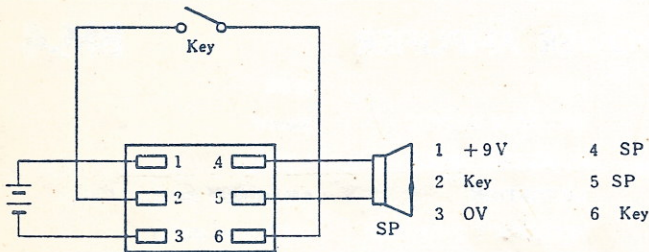


TONAL

block modules

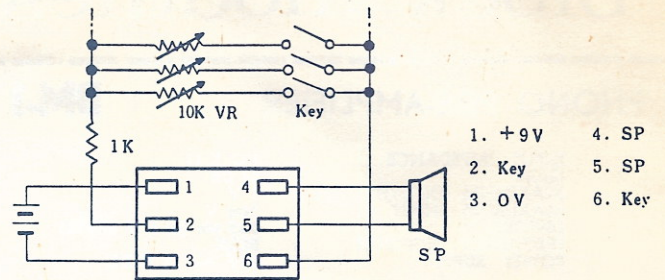
CODE PRACTICE OSCILLATOR **BM-41**

TONE FREQUENCY : 400HZ
 OUTPUT POWER : 80mW
 POWER SUPPLY : 3~9V DC
 CURRENT : 45mA



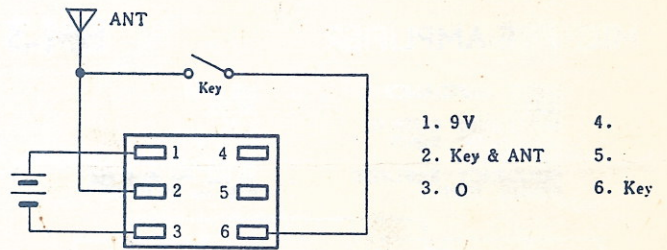
ELECTRONIC ORGAN MODULE **BM-31**

TONE FREQUENCY : 200~1000Hz
 OUTPUT POWER : 80mW
 POWER SUPPLY : 9V DC
 CURRENT : 15mA



WIRELESS CODE OSCILLATOR **BM-42**

TRANSMITTER FREQUENCY : 400HZ~30MHZ
 TONE FREQUENCY : 400HZ
 POWER SUPPLY : 9V DC
 CURRENT : 35mA



DUAL LAMP FLASHER **BM-100**

FLASHER TIME : 1/4 sec
 POWER SUPPLY : 6VDC
 CURRENT : 150mA
 LAMP : 6V-150mA

