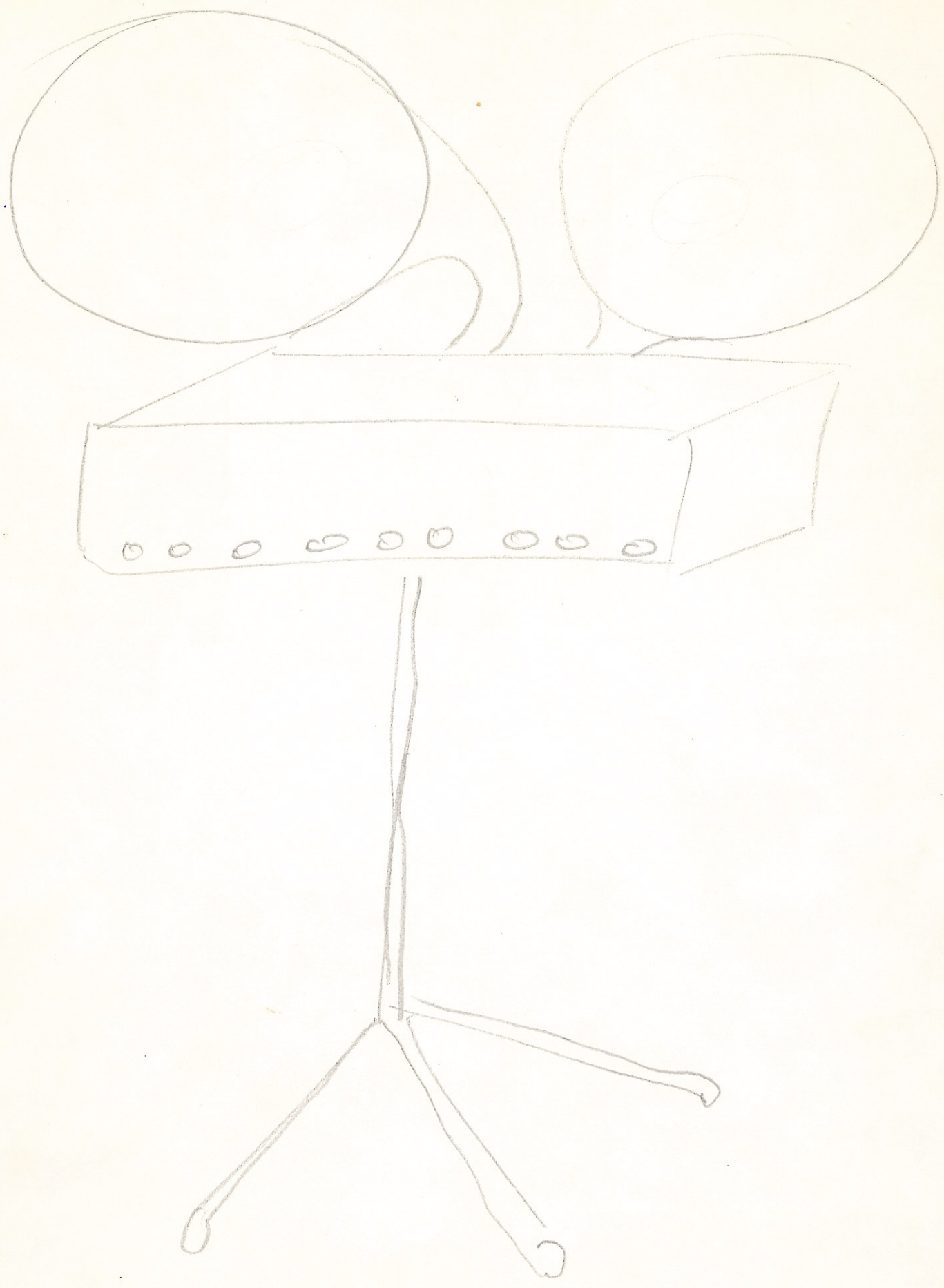
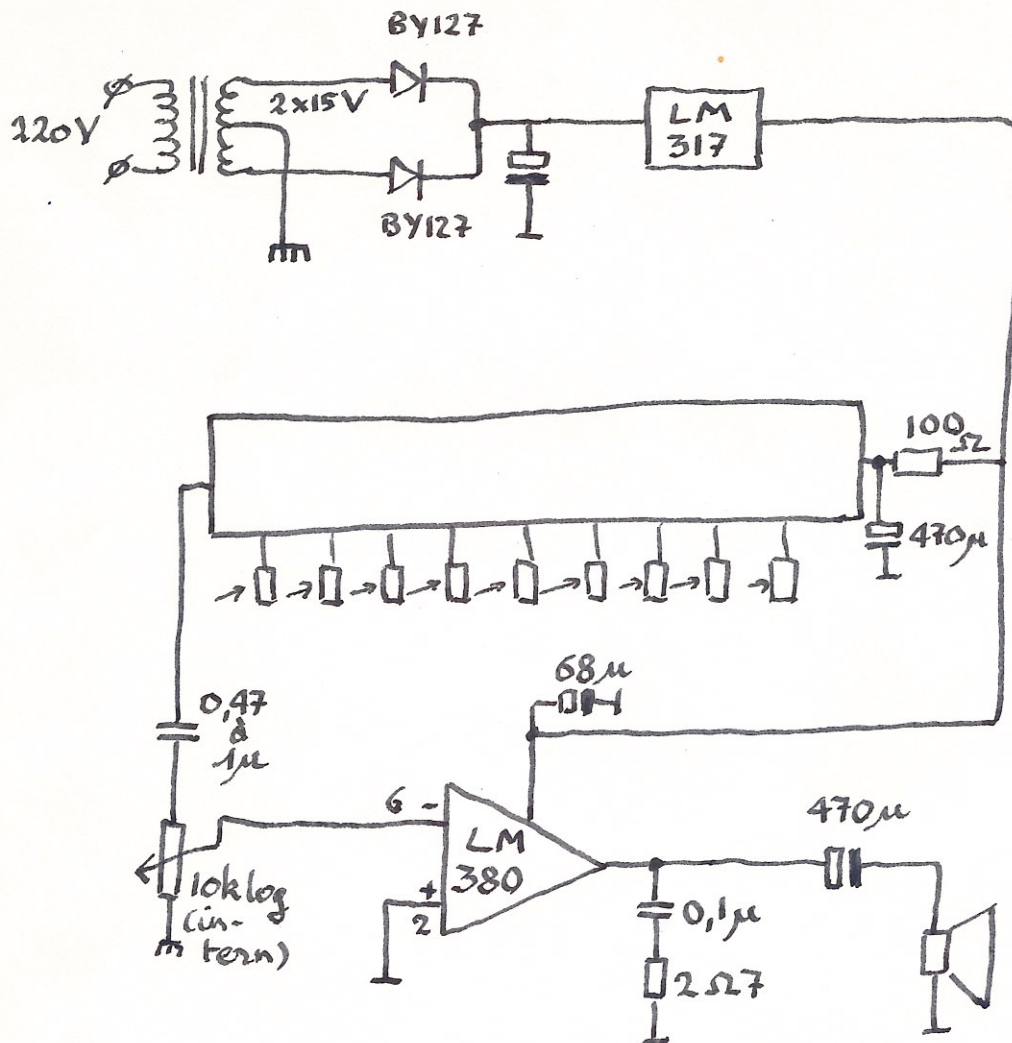


OPT ORGOFON



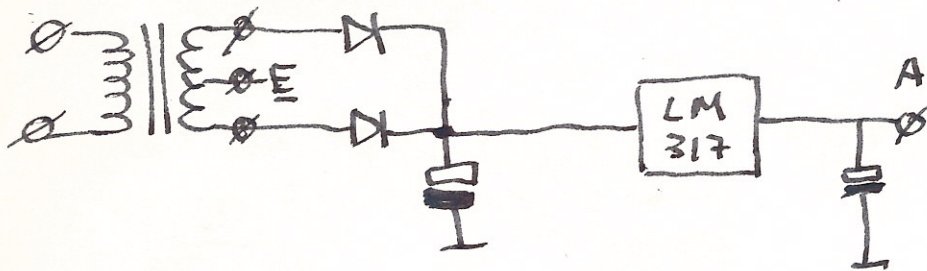
# Orgofoon





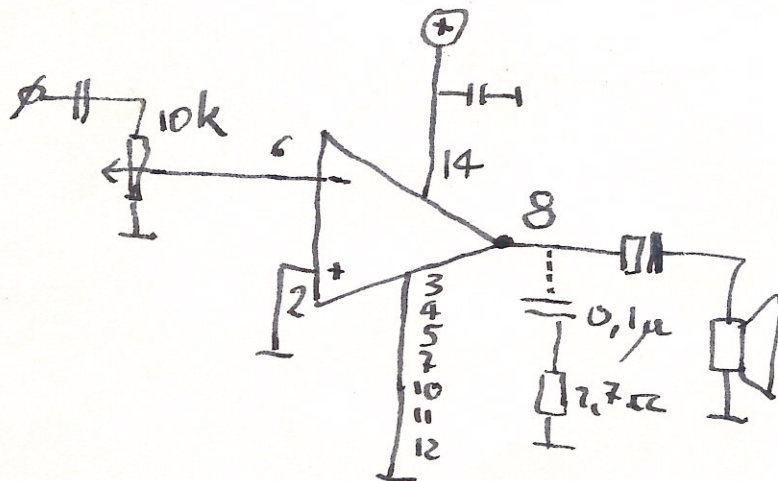
# Orgofoon

Print 1



## ABS. Max.

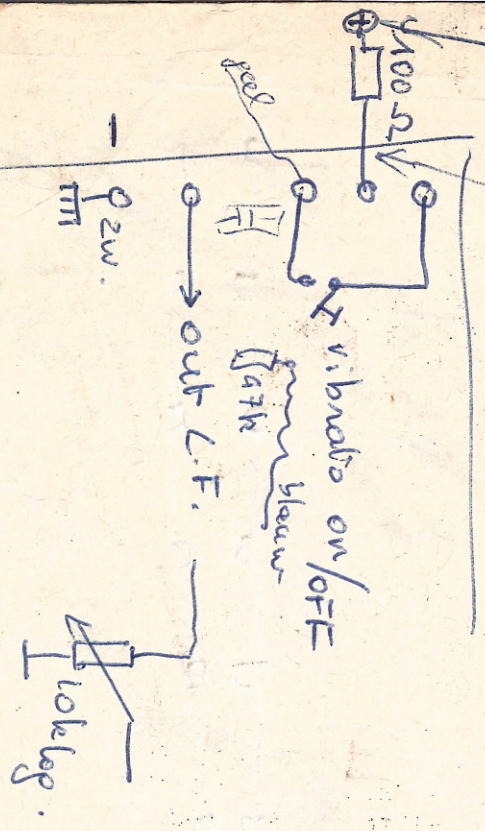
LM 384  $V_S : 12V_{min}!$   $\rightarrow P_o = 0,5W$  Max: 24V 5Walt  
 LM 380  $V_S : 8V_{min}!$   $\rightarrow P_o = 0,15W$  Max: 18V - 3Walt



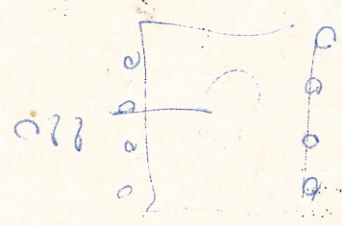
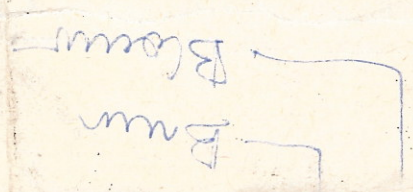
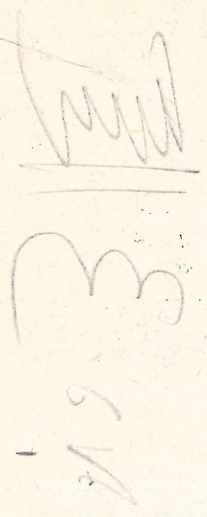


orgelpunt boven overridel.

20,5V 19V



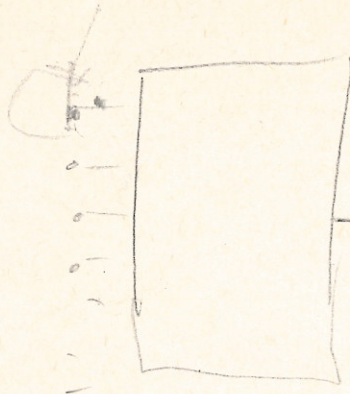
inleiding  
voetissen



110



0001



schreib  
8

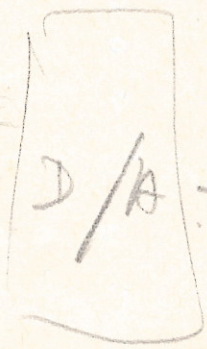
30 ↑  
H → 10.



Adress



μP



D/A

LP

M3	M0	M2
M3	M4	
M1	M0	

