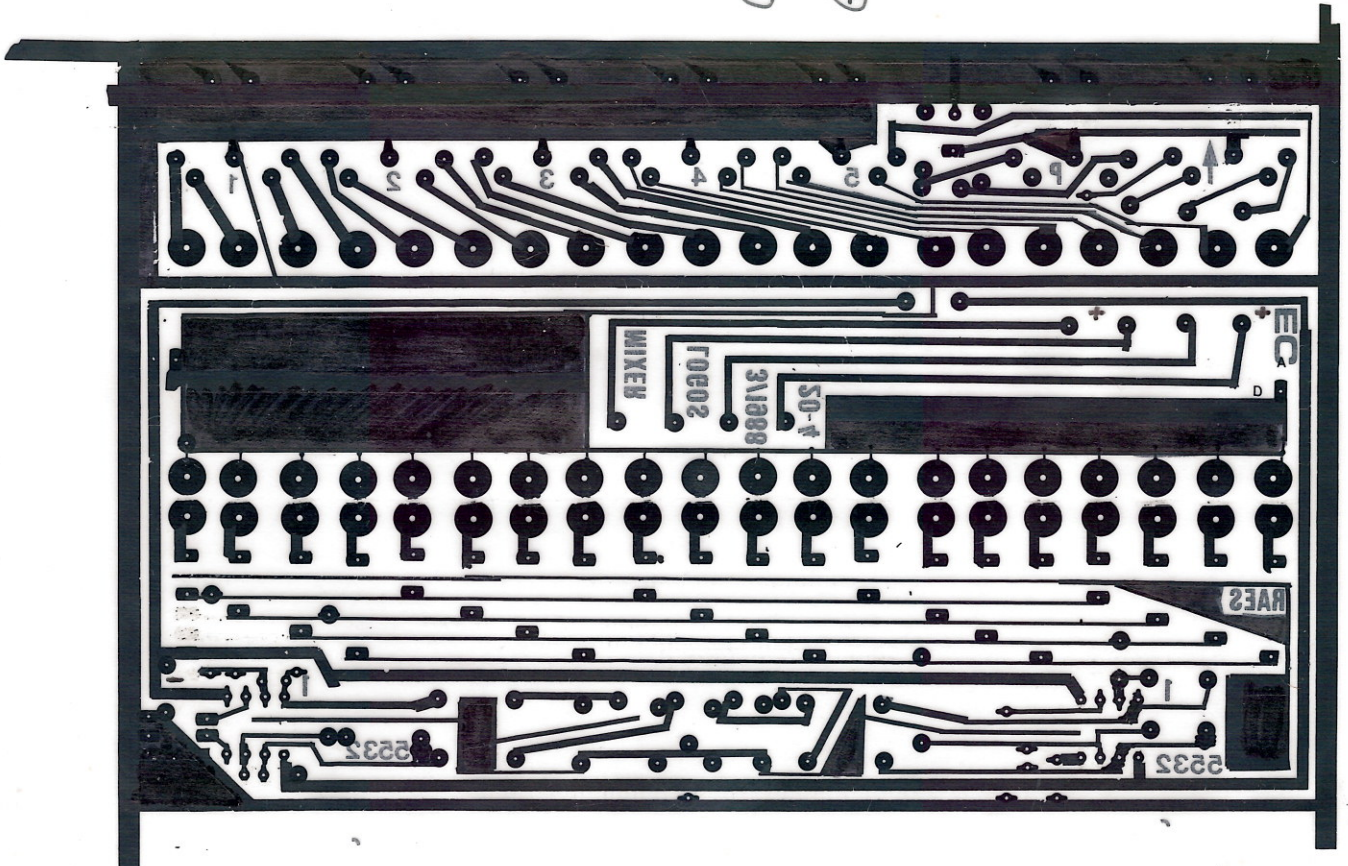
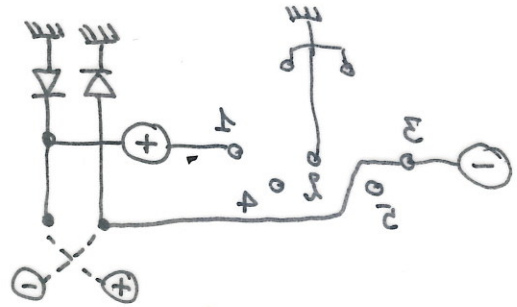
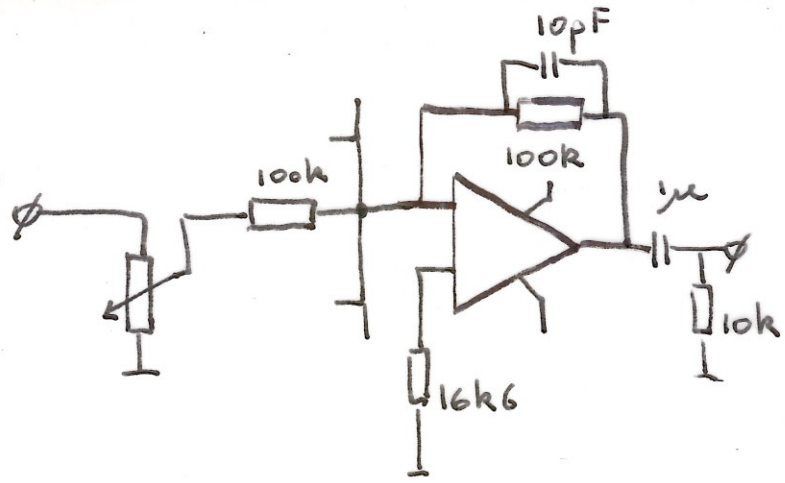
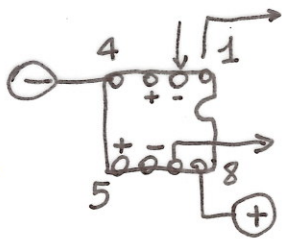


1X20 BUS  
project

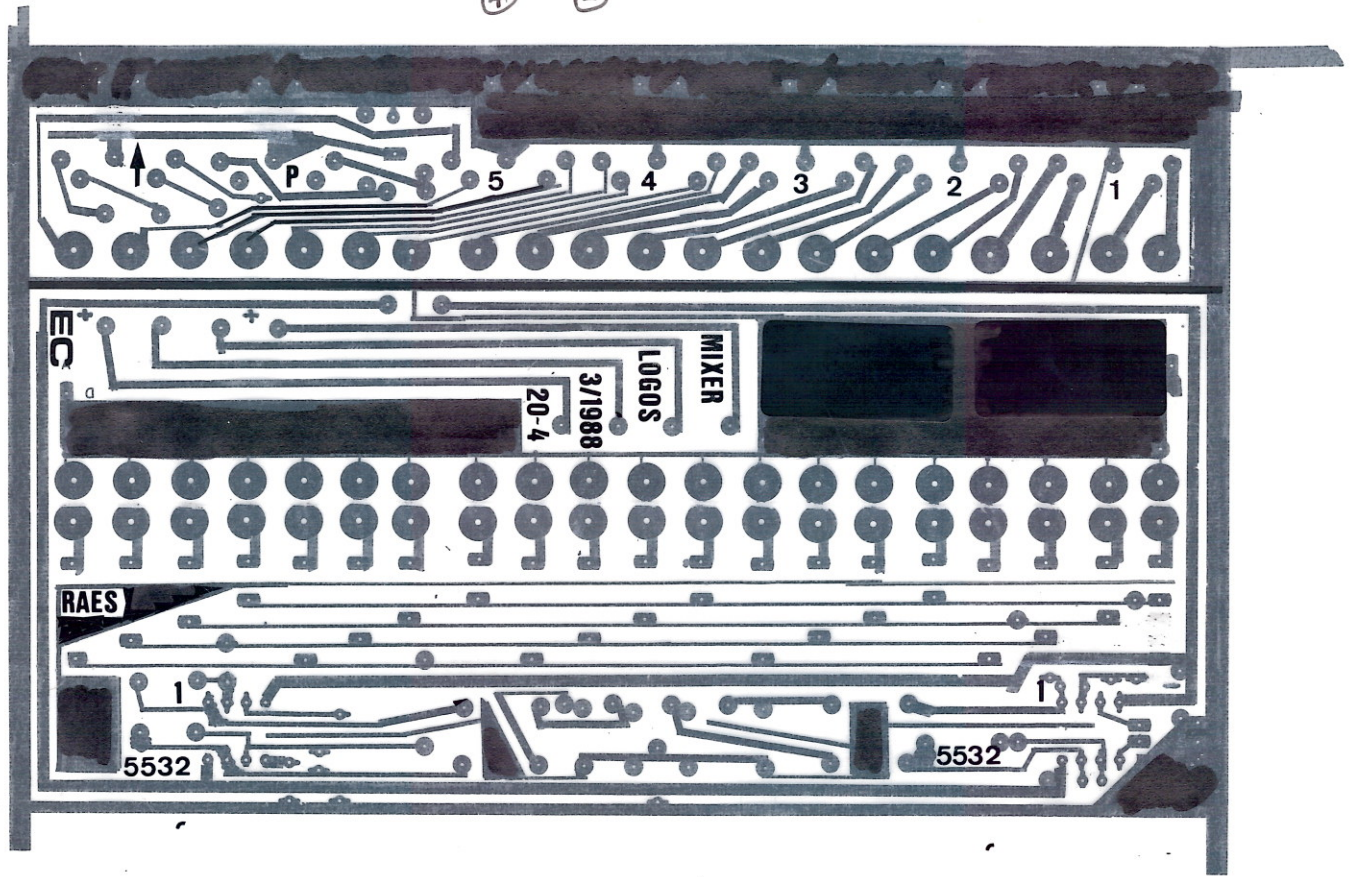
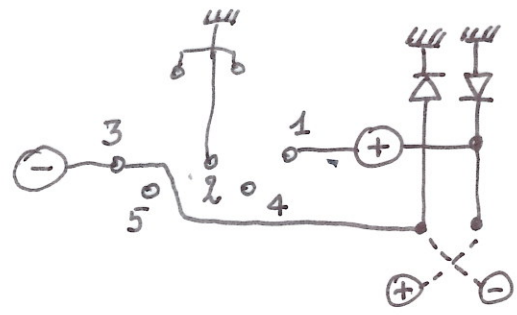
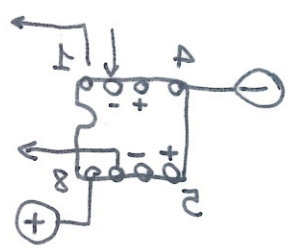
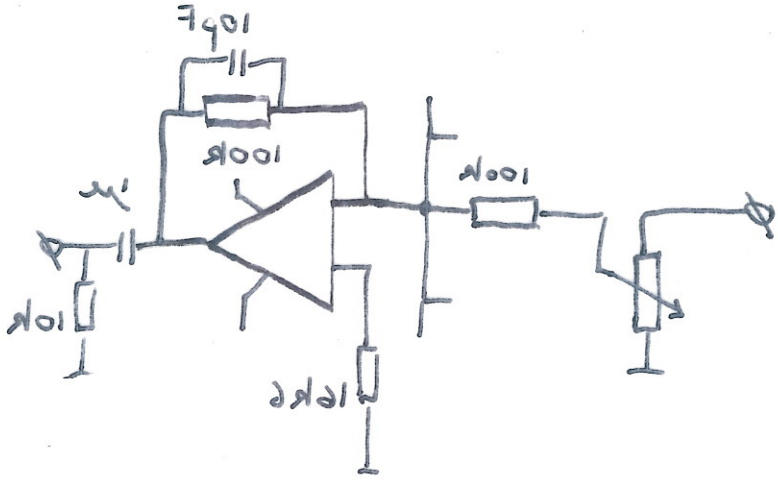
# Subminiature Mixer

[ 20 channels IN  
4 channels OUT

0dB - 0dB

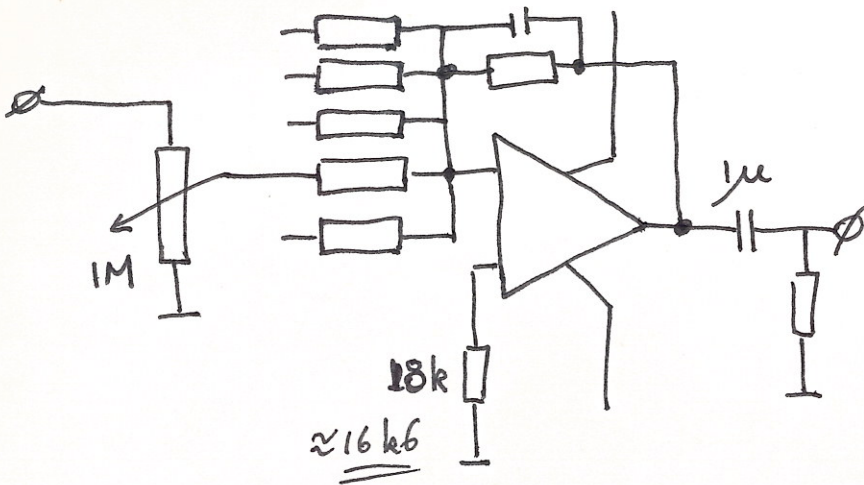


Deze komt te per  
koper aan drukken



Design on paper  
Design on PCB

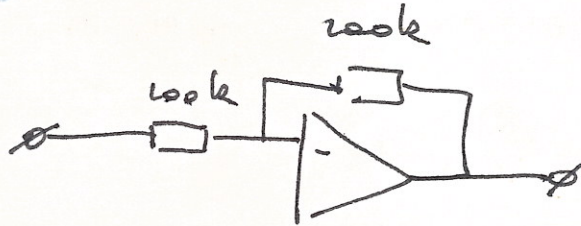
# 20-channel mixer



stel  $R's = 100k$

*doen!*

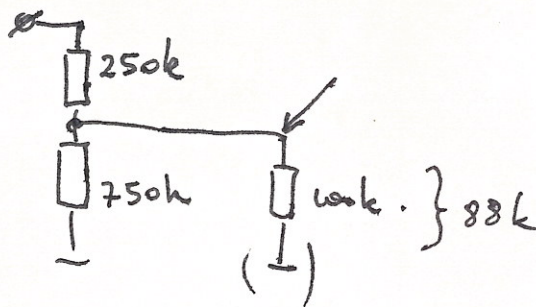
→ pot m. open :



0dB

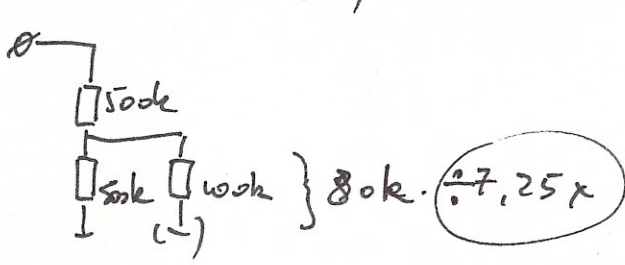
1x

pot m.  $3/4$

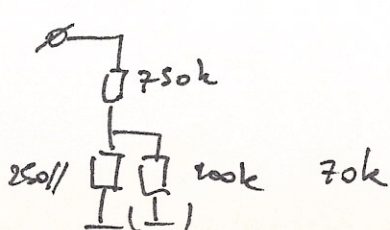


$$\frac{U_i}{U_u} = \frac{330k}{88k} \approx 3.75x$$

pot m.  $1/2$

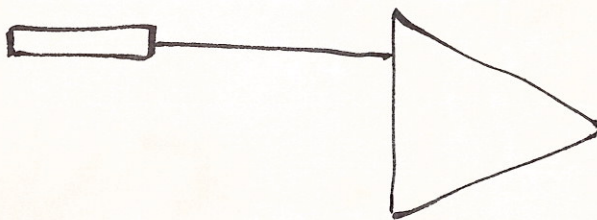
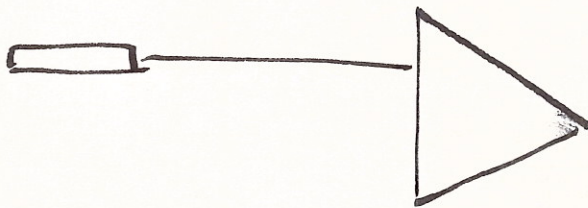
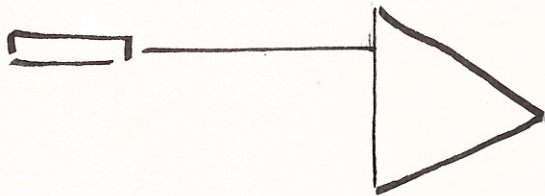
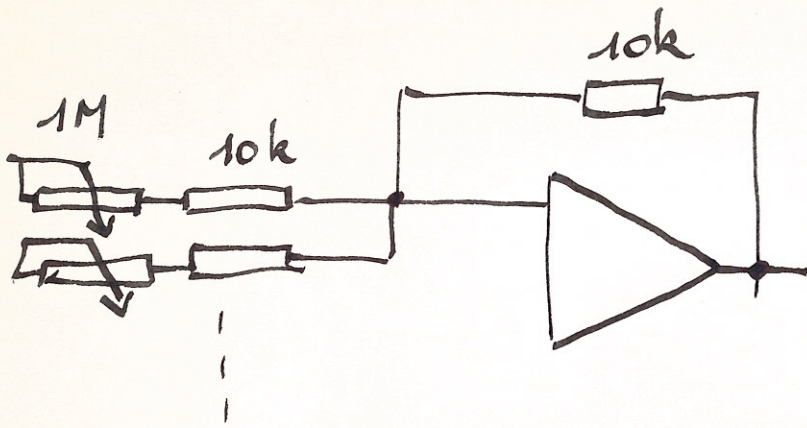


pot m.  $1/4$



DAC0808LCN

-40dB → 0dB



” + TRIM (-) + ‘  
’ + TRIM (NAME) + ‘ - ‘  
+ TRIM (FIRST\_NAME)

