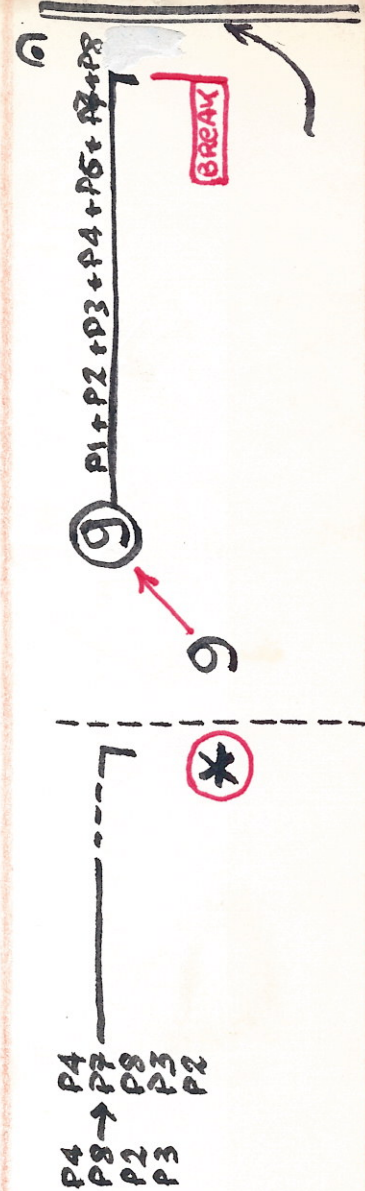
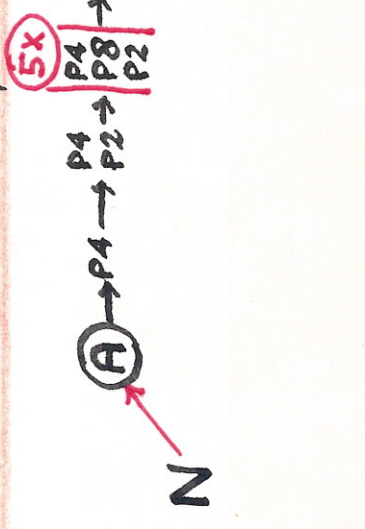
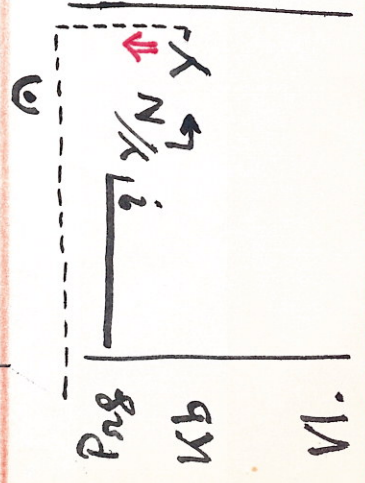
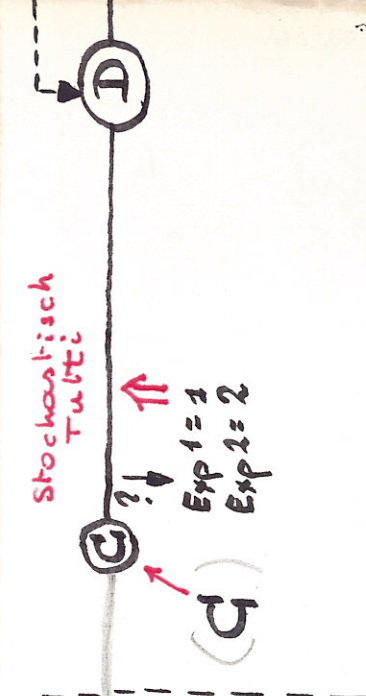
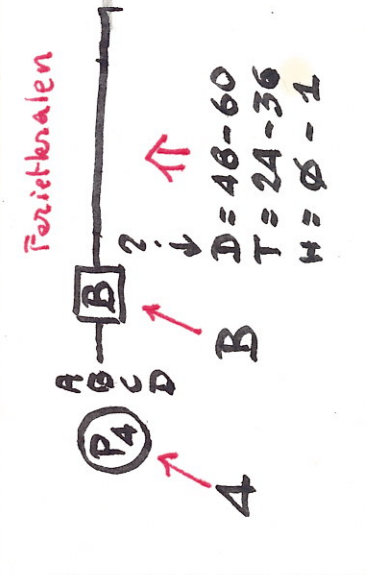
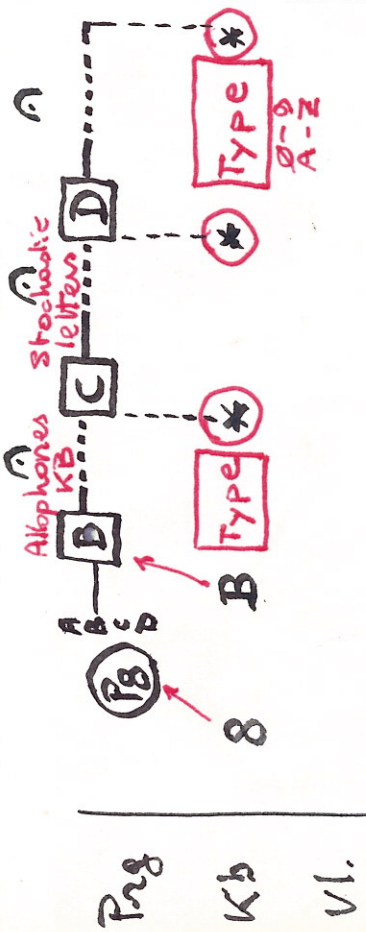
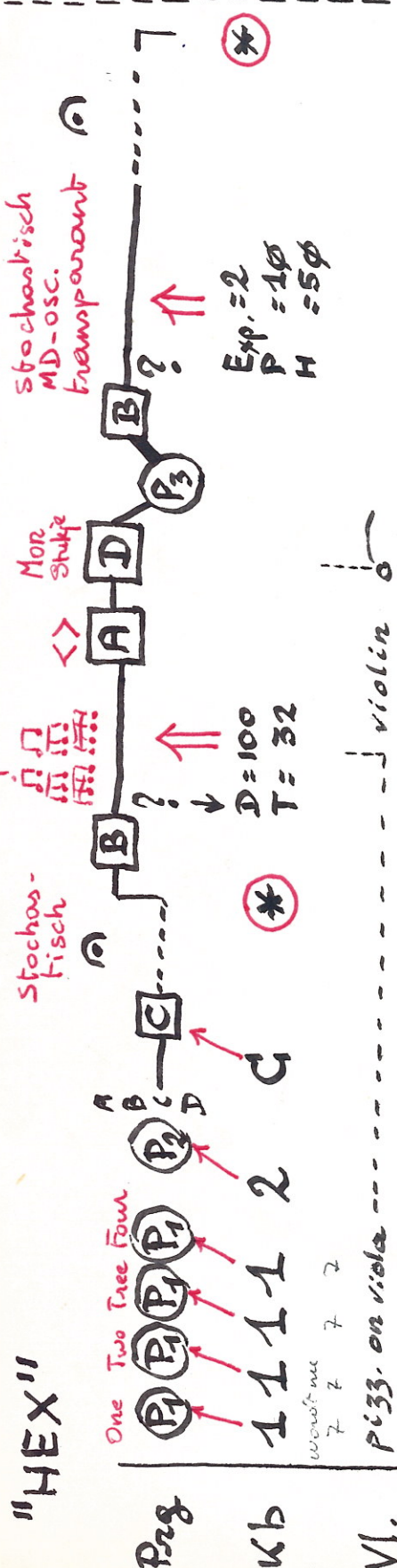


# "HEX"



# "HEX"

Versie Den Haag 06/88

```
10 PRINT"HX20-PROJEKT"
11 MEMSET 2624
12 DEFINT A-W
14 P1=480
15 P2=P1+1:P3=P2+1:P4=P3+1:P5=P4+1:P6=P5+1:P7=P6+1:P8=P7+1
16 PRINT"startadres I/O=";P1
17 POKE P1,7
20 DIM A(8)
30 DIM B(8)
40 DIM ALF(8,26)
50 FOR I=1 TO 8:FOR J=1 TO 26
52 READ ALF(I,J)
54 NEXT J : NEXT I
55 RESTORE
56 START$=TIME$ : 57 POKE P1,192
60 OPEN"O",#1,"COM0:(48N1F)"
100 'HOOFDSTURING
102 PRINT "ROOT-PRGM LoopNr=";CY
103 IF CY<21 THEN BY=CY
104 IF CY>20 AND CY<30 THEN BY=20 AND BYT=CY-20
105 IF CY>=30 AND CY<40 THEN BY=21 AND BYT=CY-29
106 IF CY>=40 AND CY<50 THEN BY=22 AND BYT=CY-28
107 IF CY>=50 THEN BY=23 AND BYT=CY-27
109 GOTO 7900
110 K$=INKEY$:IF K$="" THEN 110
120 ASK=ASC(K$)
122 IF ASK>57 AND ASK<71 THEN A=55 ELSE A=48
130 K=ASK-A : IF K<0 OR K>15 THEN GOTO 110
140 ON K GOSUB
1000,2000,3000,4000,5000,6000,7000,8000,9000,10000,11000,12000,13
000,14000,15000
150 CY=CY+1
160 GOTO 100
1000 'STURING POORT 1
1001 PRINT "POORT";K
1010 POKE P1,7 : POKE P1,192
1020 POKE P1,1 : POKE P1,4
1030 POKE P1,3 : POKE P1,9
1040 POKE P1,5 : POKE P1,7
1050 POKE P1,8: POKE P1,16
1060 POKE P1,9: POKE P1,16
1070 POKE P1,10:POKE P1,16
1080 POKE P1,13:POKE P1,14
1090 POKE P1,14: POKE P1,0
1999 RETURN
2000 'STURING POORT 2
2001 PRINT "POORT";K
2002 PRINT "PRINTERNAALDEN"
2010 PRINT "KIES A,B,C,OF D"
2020 K$=INKEY$:IF K$="" THEN 2020
2030 IF K$="A" THEN 2200
2040 IF K$="B" THEN 2400
2050 IF K$="C" THEN 2600
2060 IF K$="D" THEN 2800 ELSE 2010
2200 'A-ROUTINE
2201 PRINTTIME$;:PRINT "P2-A"
2210 FOR S=8 TO 0 STEP -2
2220 FOR BY=0 TO 16: POKE P4,BY
2230 POKE P2,BY:FOR W=0 TO S*10 : NEXT W : NEXT BY
```

} fout

```

2240 NEXT S
2250 FOR S=0 TO 6 STEP 2
2260 FOR BY=16 TO 0 STEP -1
2270 FOR A=0 TO S: POKE P2,BY:POKE P2,BY: NEXT A: POKE P4,BY*4
2280 FOR W=0 TO S*5 :NEXT W
2290 NEXT BY
2300 NEXT S
2310 S=0: BY=0: A=0: W=0
2380 GOTO 2800
2399 RETURN
2400 'B-ROUTINE
2410 INPUT "DUUR?",D :IF D=0 THEN D=100
2420 INPUT "TEMPO?",T:IF T=0 THEN T=32
2422 FOR DUR=0 TO D
2423 POKE P2,1
2424 IF DUR>=INT(D/4) AND DUR<=INT(D/3) THEN 2430 ELSE 2440
2430 FOR W=0 TO T/2 : NEXT W
2431 POKE P2,2
2432 FOR W=0 TO T/2 : NEXT W
2433 POKE P2,1
2440 IF DUR>=INT(D/2) AND DUR<=INT(3*(D/4)) THEN 2442 ELSE 2450
2442 FOR W=0 TO T/3 :NEXT W
2443 POKE P2,4
2444 FOR W=0 TO T/3 : NEXT W
2445 POKE P2,2
2446 FOR W=0 TO T/3 :NEXT W
2447 POKE P2,1
2450 IF DUR>INT(3*D/4) THEN 2460 ELSE 2470
2460 FOR W=0 TO T/4: NEXT W :POKE P2,8
2462 FOR W=0 TO T/4: NEXT W :POKE P2,4
2464 FOR W=0 TO T/4: NEXT W :POKE P2,2
2466 FOR W=0 TO T/4: NEXT W :POKE P2,1
2470 IF DUR< INT(D/4) THEN 2472 ELSE 2500
2472 FOR W=0 TO T : NEXT W
2500 NEXT DUR: GOTO 2200
2599 RETURN
2600 'C-ROUTINE
2610 PRINT"Stochastisch"
2620 Q=2 :PA=8 :HF=3 :M=0
2630 FOR I=0 TO 3
2632 A(I)=2*(RND(N)^Q):M=M+(2^I)*A(I):PRINT A(I):
2634 NEXT I
2650 POKE P2,M
2670 RANDOMIZE(N+2)
2671 N=N+1 : HLD=RND(N)*HF
2674 FOR X=0 TO HLD : NEXT X
2676 FOR I=0 TO 3: L=L+A(I) :NEXT I
2677 IF L=1 THEN 2620
2678 TM=PA*(RND(N))
2679 PRINT"STILTE=";TM;" UNITS"
2680 FOR T=0 TO TM: NEXT T
2690 K#=INKEY#: IF K#="*" THEN 2400 ELSE 2620
2799 RETURN
2800 'D-ROUTINE
2805 FOR B=0 TO 4
2810 FOR E=0 TO 3 :NL=2^E:POKE P2,NL:POKE P4,B
2820 FOR Y=0 TO 50:NEXT Y: NEXT E : POKE P4,E
2830 FOR E=0 TO 3:NL=2^E:POKE P2,NL:NEXT E
2840 FOR Y=0 TO 100:NEXT Y

```

```

2850 NEXT B: POKE P4,1
2860 FOR E=0 TO 3:NL=2^E:POKE P2,NL:NEXT E :FOR Y=0 TO 50: NEXT
Y: POKE P4,2: FO
R Y=0 TO 50 :NEXT Y: POKE P4,3
2870 FOR A=1 TO 5:POKE P2,B
2880 FOR Y=0 TO 200: NEXT Y :POKE P4,A : NEXT A
2890 FOR E=0 TO 3:NL=2^E:POKE P2,NL:NEXT E: FOR Y=0 TO 250: NEXT
Y
2891 POKE P2,2: FOR Y=0 TO 250: NEXT Y: POKE P4,64
2892 POKE P2,4: FOR Y=0 TO 250:NEXT Y:POKE P2,4:FOR Y=0 TO
250:NEXT Y
2893 FOR B1=0 TO 2: FOR E=0 TO 3:NL=2^E:POKE P2,NL: NEXT E:POKE
P4,B1:NEXT B1
2894 FOR Y=0 TO 250:NEXT Y:FOR C=0 TO 10: NL=1:POKE P2,NL:NEXT C
2895 FOR Y=0 TO 125: NEXT Y :FOR D=0 TO 10: NL=8: POKE P2,NL:NEXT
D
2896 FOR Y=0 TO 125: NEXT Y:FOR F=0 TO 10: POKE P2,2: NEXT F
2897 FOR Y=0 TO 500: NEXT Y
2898 FOR G=0 TO 2: POKE P4,128
2899 FOR E=0 TO 1: NL=2^E:POKE P2,NL:NEXT E: NEXT G: FOR E=1 TO
3: NL=2^E:POKE P
2,NL:POKE P4,NL:NEXT E
2900 POKE P3,3
2999 GOTO 3700
3000 'STURING POORT 3
3001 PRINT "POORT";K
3002 PRINT"MD-OSCILLATOR"
3003 PRINT"KIES B,C OF D"
3004 K#=INKEY#: IF K#="" THEN 3004
3006 IF K#="B" THEN 3700
3007 IF K#="C" THEN 3800
3008 IF K#="D" THEN 3900 ELSE 3003
3700 'MD-OSC ROUTINE B
3702 PRINT"Stochastisch"
3703 INPUT"Prob.Exponent?",Q
3704 INPUT"Pause Faktor ?",PA
3705 INPUT"Hold Faktor ?",HF
3706 K=0:L=0:N=0:I=0
3709 FOR I=0 TO 7 : N=N+1: IF N>220 THEN N=0 : POKE P2,I+N :POKE
P4,I
3710 B(I)=INT(2*(RND(CY)^Q)) : POKE P4,B(I)
3711 NEXT I: M=0 : L=0
3713 FOR I=0 TO 7 : POKE P2,I
3714 M=M+(2^I)*B(I): POKE P4,M
3715 NEXT I
3718 POKE P3,M
3720 FOR I=0 TO 7:PRINT B(I);:POKE P4,I:NEXT I
3722 'hold time loop
3725 HLD=RND(CY)*HF: FOR X=0 TO HLD : NEXT X
3728 FOR I=0 TO 7 :L=L+B(I):NEXT I
3729 IF L=1 THEN 3709
3730 POKE P3,0
3731 TM=PA*(RND(CY))
3732 PRINT"Stilte=";TM;" Units"
3734 FOR T=0 TO TM:POKE P2,T :NEXT T
3736 K#=INKEY#: IF K#="*" THEN 3999 ELSE 3709
3799 POKE P3,0 :RETURN
3800 'MD-OSC ROUTINE C
3899 RETURN

```

```

3900 'MD-OSC ROUTINE D
3999 RETURN
4000 'STURING POORT 4
4001 PRINT "POORT";K
4002 PRINT"ELEKTROMAGNETEN"
4010 PRINT"KIES A,B, OF D"
4020 K$=INKEY$:IF K$="" THEN 4020
4030 IF K$="A" THEN 4200
4031 IF K$="B" THEN 4400
4032 IF K$="C" THEN 4600
4033 IF K$="D" THEN 4800 ELSE 4010
4200 'TESTROUTINE
4206 FOR BY=0 TO 255:POKE P4,BY:FOR Y=0 TO 50:NEXT Y:POKE
P4,0:NEXT BY:RETURN
4400 PRINT"B-ROUTINE"
4410 INPUT "DUUR?",DUR
4420 INPUT "TEMPO>12?",T
4430 INPUT "HOLD-TIME?",H
4440 FOR DC=0 TO DUR:POKE P2,DUR
4450 IF DC<DUR/6 THEN 4455 ELSE 4460
4455 POKE P4,1:FOR W=0 TO T:NEXT W: GOTO 4580
4460 IF DC>=DUR/6 AND DC<DUR/5 THEN 4465 ELSE 4470
4465 FOR E=0 TO 1
4466 POKE P4,(2^E): FOR W=0 TO T/2: NEXT W :NEXT E: GOTO 4580
4470 IF DC>=DUR/5 AND DC<DUR/4 THEN 4471 ELSE 4480
4471 FOR E=1 TO 3
4472 POKE P4,(2^E): FOR W=0 TO T/3: NEXT W:NEXT E :GOTO 4580
4480 IF DC>=DUR/4 AND DC<DUR/3 THEN 4481 ELSE 4490
4481 FOR E=2 TO 5
4482 POKE P4,(2^E): FOR W=0 TO T/4: NEXT W:NEXT E: GOTO 4580
4490 IF DC>= DUR/3 AND DC<(DUR*2)/5 THEN 4491 ELSE 4500
4491 FOR E=3 TO 7
4492 POKE P4,(2^E):FOR W=0 TO T/5: NEXT W : NEXT E : GOTO 4580
4500 IF DC>=DUR*2/5 AND DC<DUR/2 THEN 4501 ELSE 4510
4501 FOR E=0 TO 5
4502 POKE P4,2^E : FOR W=0 TO T/6 : NEXT W: NEXT E : GOTO 4580
4510 IF DC>= DUR/2 AND DC<DUR*3/5 THEN 4511 ELSE 4520
4511 FOR E=0 TO 6
4512 POKE P4,2^E: FOR W=0 TO T/7 : NEXT W: NEXT E : GOTO 4580
4520 IF DC>=DUR*3/5 AND DC<DUR*2/3 THEN 4521 ELSE 4530
4521 FOR E=0 TO 7
4522 POKE P4,2^E : FOR W=0 TO T/8:NEXT W:NEXT E: GOTO 4580
4530 IF DC>=DUR*2/3 AND DC<DUR*3/4 THEN 4531 ELSE 4540
4531 FOR E=7 TO 0 STEP -1
4532 POKE P4,2^E:FOR W=0 TO T/9:NEXT W:NEXT E: GOTO 4580
4540 IF DC>=DUR*3/4 AND DC<DUR*4/5 THEN 4541 ELSE 4550
4541 FOR E=0 TO 7
4542 POKE P4,(2^E)+1: FOR W=0 TO T/10:NEXT W: NEXT E: GOTO 4580
4550 IF DC>=DUR*4/5 AND DC<DUR*5/6 THEN 4551 ELSE 4560
4551 FOR E=0 TO 7
4552 POKE P4,(2^E)+3:FOR W=0 TO T/11: NEXT W : NEXT E:GOTO 4580
4560 IF DC>=DUR*5/6 THEN 4561
4561 FOR E=0 TO 7
4562 POKE P4,(2^E)+7:FOR W=0 TO T/12: NEXT W: NEXT E
4580 NEXT DC
4590 GOTO 12000
4599 RETURN
4600 PRINT"C-ROUTINE P4"
4601 PRINT"NOG NIET AF"

```

```

4799 RETURN
4800 PRINT"D-ROUTINE-P4"
4801 PRINT"MANUEEL 1-8 TOETS"
4810 K$=INKEY$ : IF K$="" THEN 4810
4811 IF K$="*" THEN 4999
4820 IF K$="1" THEN POKE P4,1
4822 IF K$="2" THEN POKE P4,2
4824 IF K$="3" THEN POKE P4,4
4826 IF K$="4" THEN POKE P4,8
4828 IF K$="5" THEN POKE P4,16
4830 IF K$="6" THEN POKE P4,32
4832 IF K$="7" THEN POKE P4,64
4834 IF K$="8" THEN POKE P4,128
4840 FOR X=0 TO 2 : NEXT X
4850 POKE P4,0
4860 GOTO 4810
4999 RETURN
5000 'STURING POORT 5
5001 PRINT "POORT";K
5999 RETURN
6000 'STURING POORT 6
6001 PRINT "POORT";K
6999 RETURN
7000 'STURING POORT 7
7001 PRINT "POORT";K
7002 PRINT "LOGOLOG 1"
7020 PRINT "KIES A OF B "
7030 K$=INKEY$: IF K$="" THEN 7030
7040 IF K$="A" THEN GOTO 7200
7041 IF K$="B" THEN GOTO 7400
7045 GOTO 7030
7200 PRINT "SPEACH-TEST"
7210 FOR BY=0 TO 32
7220 POKE P7,BY :FOR W=0 TO 70 : NEXT W
7240 NEXT BY
7250 K$=INKEY$: IF K$="*" THEN 7260 ELSE 7210
7260 RETURN
7400 PRINT"SPEACH-PLAY"
7410 K$=INKEY$: IF K$="*" THEN 7500 ELSE IF K$="" THEN 7410
7420 ASK=ASC(K$) :K=ASK-48
7430 IF K>-1 AND K<36 THEN 7440 ELSE 7410
7440 POKE P7,K
7450 K$=INKEY$: IF K$="*" THEN 7500 ELSE 7410
7500 RETURN
7900 'COUNTER HOOFDPROGRAMMA .
7902 POKE P7,BY
7904 IF BYT>0 THEN 7906 ELSE 7910
7906 POKE P7,BYT
7910 GOTO 110
7999 RETURN
8000 'STURING POORT 8
8001 PRINT "POORT";K
8020 PRINT "KIES A,B,C,D"
8030 K$=INKEY$: IF K$="" THEN 8030
8040 IF K$="A" THEN 8200
8041 IF K$="B" THEN 8400
8042 IF K$="C" THEN 8600
8043 IF K$="D" THEN 8800
8045 GOTO 8030

```

```

8200 PRINT "SPEACH-TEST"
8201 PRINT"beide kaarten benut"
8203 INPUT"Duur?",D
8205 FOR ST=D TO 0 STEP -1
8206 K$=INKEY$: IF K$="*" THEN ST=0
8210 BY=RND(CY)*63 :W=RND(CY+1)*100
8220 POKE PB,BY :FOR H=0 TO W : NEXT H
8240 POKE PB,0
8246 LET M=M+1 : IF M<32 THEN POKE P7,M ELSE LET M=0 :POKE P7,M
8250 NEXT ST
8260 RETURN
8400 PRINT"SPEACH-PLAY"
8401 PRINT" * = STOP "
8410 K$=INKEY$: IF K$="" THEN 8410
8411 IF K$="*" THEN 8499
8420 ASK=ASC(K$) :IF ASK<48 OR ASK>112 THEN 8410
8430 K=ASK-48
8440 POKE PB,K
8450 K$=INKEY$: IF K$="*" THEN 8499 ELSE 8410
8499 POKE PB,4
8500 'RETURN
8600 PRINT"Alfabet Routine C"
8602 PRINT"Stop met *"
8610 K$=INKEY$: IF K$="*" THEN 8699
8620 A=RND(CY)*26
8630 FOR I=1 TO 8
8640 L=ALF(I,A) : POKE PB,L
8650 NEXT I : POKE PB,0
8660 GOTO 8610
8699 K$="" : 'RETURN
8800 'ROUTINE D
8801 PRINT"Talking Keyboard"
8802 PRINT"Stop met *"
8810 K$=INKEY$ : IF K$="*" THEN 8999
8820 IF K$>="0" AND K$<="9" THEN 8830 ELSE 8860
8830 K=ASC(K$)-48
8840 POKE P7,K
8850 GOTO 8810
8860 IF K$>="A" AND K$<="Z" THEN 8870 ELSE 8810
8870 K=ASC(K$)-64
8880 FOR I=1 TO 8
8890 L=ALF(I,K)
8892 POKE PB,L
8894 NEXT I
8895 GOTO 8810
8999 RETURN
9000 'TUTTI-TEST
9010 PRINT"TUTTI-TEST"
9020 FOR BY=0 TO 255
9030 'POKE P1,BY
9035 BR=BY/16
9040 POKE P2,BR:POKE P3,BY:POKE P4,BY:POKE P5,BY:POKE P6,BY
9090 POKE P7,BY/8
9100 POKE PB,BY/4
9110 POKE P2,0:POKE P3,0:POKE P4,0: POKE P5,0 :POKE P6,0: POKE
P7,0:POKE PB,0
9199 NEXT BY
9500 STP$=TIME$
9510 PRINT START$

```

```

9520 PRINT STP$
9999 RETURN
10000 'STURING KOMBIN 2
10001 PRINT TIME$
10009 PRINT"EEN KAART - P4"
10010 FOR C=0 TO 12: FOR E4=0 TO 7
10011 BY1=2^E4 : BY2=RND(X)*255
10012 POKE P4,BY1: POKE P4,0:POKE P4,BY2: POKE P4,0
10013 NEXT E4 : NEXT C
10020 PRINT"TWEE KAARTEN"
10030 FOR E1=0 TO 6:FOR E2=0 TO 7:BT1=2^E1: BT2=2^E2: BY4=BT1+BT2
10050 POKE P4,BY4:POKE P4,0:POKE P4,BY4:POKE P4,0: POKE P4,BY4
10060 BY2=INT((BY4)/16)
10062 POKE P2,BY2
10070 NEXT E2 : NEXT E1
10099 PRINT"DRIE KAARTEN": POKE P3,0
10100 FOR E1=0 TO 3 : FOR E2=4 TO 8: FOR E3=1 TO 7 : BT1=2^E1:
BT2=2^E2: BT3=2^E
3
10110 BY4=BT1+BT2+BT3
10120 IF BY4>255 THEN BY4=0
10130 POKE P4,BY4
10140 BY2=INT((BY4)/16)
10150 POKE P2,BY2
10160 BY8=INT((BY4)/4)
10162 POKE P8,BY8
10170 NEXT E3: NEXT E2: NEXT E1
10200 PRINT "4-KAARTEN"
10210 FOR BY4=255 TO 0 STEP -1
10230 POKE P4,BY4
10240 BY8=INT((BY4)/4)
10250 POKE P2,BY8
10260 POKE P3,BY4
10265 POKE P8,BY8
10280 NEXT BY4
10300 PRINT "VIJF KAARTEN"
10305 PRINT"Stop=*"
10310 BY2=RND(X)*16
10320 BY3=RND(X+1)*255
10330 BY4=RND(X+2)*255
10340 BY7=RND(X+3)*32
10350 BY8=RND(X+4)*63
10400 POKE P2,BY2:POKE P3,BY3:POKE P4,BY4: POKE P7,BY7: POKE
P8,BY8
10410 RANDOMIZE X
10420 K$=INKEY$: IF K$="*" THEN 10900 ELSE 10310
10900 PRINT TIME$
10999 RETURN
11000 ' KOMBINATIE 3
11001 PRINT"MANUEEL-TUTTI"
11002 PRINT"POORTNUMMER ?";
11010 K$=INKEY$: IF K$="*" THEN 11999 ELSE 11011
11011 IF K$="" THEN 11010 ELSE 11012
11012 IF K$>"0" AND K$<"9" THEN 11050 ELSE 11010
11050 P=(ASC(K$))+((P1)-49)
11051 PRINT P-(P1)+1
11060 INPUT "Byte?",BY
11100 IF BY>255 THEN BY=0
11101 IF P=P7 THEN IF BY>32 THEN BY=BY/8

```



```

11102 IF P=PB THEN IF BY>63 THEN BY=BY/4
11105 PRINT "STOP=DRUK TOETS"
11106 PRINT " *= HOOFDMENU "
11110 POKE P,BY
11120 K#=INKEY$:IF K#="" THEN 11110 ELSE 11130
11130 IF K#="*" THEN 11999 ELSE 11140
11140 PRINT "Next Poort?"
11150 GOTO 11010
11999 RETURN
12000 'KOMBINATIE 4
12010 PRINT"Stochastisch Tutti"
12020 INPUT "START-EXPONENT ?",X
12030 INPUT "STOP-EXPONENT ?",Y
12031 PRINT TIME$
12040 K#=INKEY$: IF K#="*" THEN 12999
12050 FOR Z=Y TO X STEP -.05
12060 FOR I=0 TO 7
12070 A(I)=2*(RND(CY+I)^Z):M=0
12080 M=M+(2^I)*A(I):D=D+1
12200 IF I=1 AND A(I)=1 THEN 12202 ELSE 12300
12202 FOR C=0 TO M+(I^2)
12203 POKE P2,(RND(M)*16):POKE P2,0:NEXT C
12300 IF I=2 AND A(I)=1 THEN POKE P3,M
12310 IF I=2 AND A(I)=0 THEN 12320 ELSE 12400
12320 Q=(RND(D)*4)+1
12330 R=(D-Q*INT(D/Q))
12340 IF R=0 THEN POKE P3,0
12400 IF I=3 AND A(I)=1 THEN 12402 ELSE 12500
12402 FOR C=0 TO M+(I^2)
12406 FOR G=0 TO M/4 : POKE P4,M : POKE P4,0 : NEXT G
12408 NEXT C
12500 IF I=4 AND A(I)=1 THEN POKE P5,M
12600 IF I=5 AND A(I)=1 THEN POKE P6,M
12700 IF I=6 AND A(I)=1 THEN POKE P7,(RND(CY+M)*20)
12800 IF I=7 AND A(I)=1 THEN 12802 ELSE 12860
12802 L=RND(CY)*26
12804 FOR J=1 TO 8
12806 POKE P8,ALF(J,L)
12810 NEXT J
12860 NEXT I
12900 NEXT Z
12901 PRINT TIME$
12910 BY=0:Q=0:R=0:C=0:D=0
12940 N=-1
12950 GOTO 13000
12999 RETURN
13000 'KOMBINATIE 5
13005 N=0
13010 PRINT"TELTUTTI 2"
13015 N=N+1
13020 FOR E=7 TO 0 STEP -1
13030 FOR P=P2 TO P8 : BY=(2^E)+N
13050 IF P=P7 THEN IF BY>32 THEN BY=BY/8
13060 IF P=P8 THEN IF BY>64 THEN BY=BY/4
13070 POKE P,BY
13080 NEXT P : NEXT E
13090 PRINT "Repeat? Y/N"
13100 K#=INKEY$ : IF K#="" THEN 13100
13110 IF K#="Y" OR K#="y" THEN 13010 ELSE 10000

```

```

13999 RETURN
14000 ' KOMBINATIE 6
14999 RETURN
15000 ' KOMBINATIE 7
15999 RETURN
20000 DATA
20,63,55,33,19,7,10,20,24,10,42,7,7,7,53,9,42,59,7,13,49,35,33,7,46,4
3
20001 DATA
4,19,55,19,4,7,19,1,6,7,7,7,7,7,4,19,49,4,7,19,31,19,15,7,6,19
20002 DATA
4,4,19,4,4,40,4,2,4,20,20,62,16,11,4,4,31,4,55,4,4,4,1,2,4,4
20003 DATA
4,4,4,4,4,40,4,50,4,4,4,4,4,4,4,4,4,4,3,55,4,4,4,63,41,4,4
20004 DATA 0,3,4,0,0,4,0,4,3,4,3,4,4,4,0,0,3,2,4,2,2,0,62,55,0,0
20005 DATA 0,2,0,0,0,4,0,3,0,0,0,3,3,4,0,0,0,0,4,0,0,0,49,55,0,0
20006 DATA 0,0,0,0,0,0,0,0,0,0,0,0,0,0,0,0,0,0,0,0,0,0,31,4,0,0
20007 DATA 0,0,0,0,0,0,0,0,0,0,0,0,0,0,0,0,0,0,0,0,0,0,0,0,0,0
30000 LIST"COM0:(48N1F)"

```

Current date is Thu 6-16-1988

Enter new date (mm-dd-yy): ^C

Current time is 17:42:17.57  
Enter new time: ^C

Godfried-Willem RAES  
Kongostraat 35  
9000 GENT