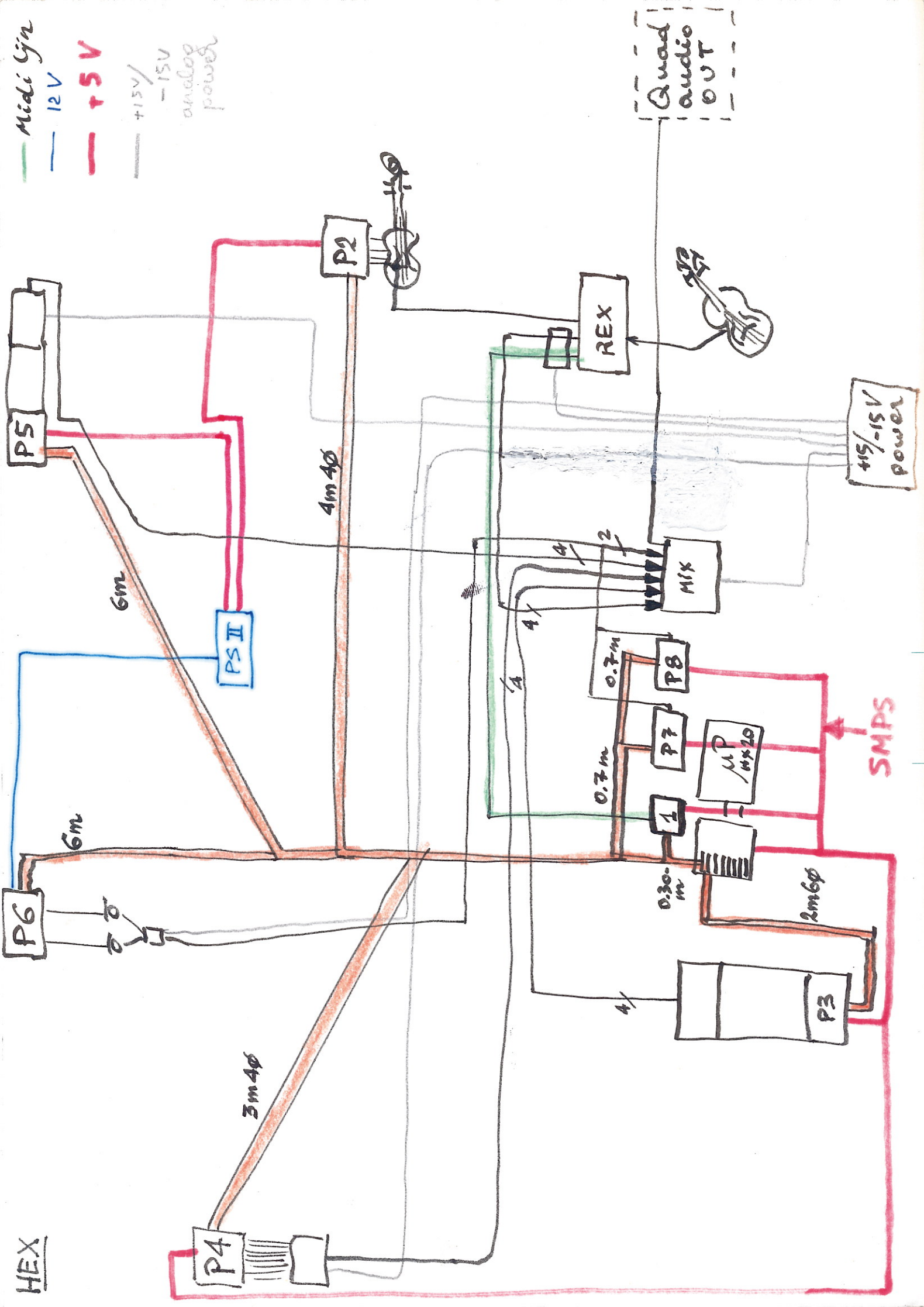


- Midi Syn
- 12V
- +5V
- +15V / -15V analog power



HEX

md oscillator

opstellingsgegevens & objectdeskriptie

D $\emptyset$  : 0.3mm steel-string  
with suspended Tuning Fork

D1 : thin long stretched spring  
 $\emptyset$  4mm

D2 : long stretched spring  
 $\emptyset$  6mm type: reverb-spring.

D3 : Steel sheet (Inox)

D4 : Hasberg steel stripe - bend upwards  
& twisted

D5 : fixed Hasberg soldered to disks

D6 : string soldered to disks

D7 : long loose galvanised spring  
 $\emptyset$  6mm

flat cables Hex.

- 3m 40     11
- 70     11
- 30     1
- 2m 60     1
- 4m 40     1
- 6m 00     11

gebruik

- P4 ~~MD-OSC~~     ferrit ~~MD-OSC~~
- P7 & P8     Speech cards
- P1     Synthe
- P3
- P2     printer naalden  
alt viool
- P5 P6

Voedingskabels 5V

- 1m 40     1
- 6m 00     1
- 5m 00     1
- 3m 40     1

- P2     printer naalden  
alt viool
- P4     ferrit
- P3     MD-OSC

Voedingskabels +15V-0--15V



... van 5V op 7/102

# Settings for text.

0000

0000

Yel. Rd. wit-Zwoud

4 2 9 0

format:

-14dB

I II -18 dB

III IV -12dB

effects

direct

VOOR

Achter

# Holo sound

## settings:

0 2 4 5

0 2 5 9

headlevel: 4

Aux:

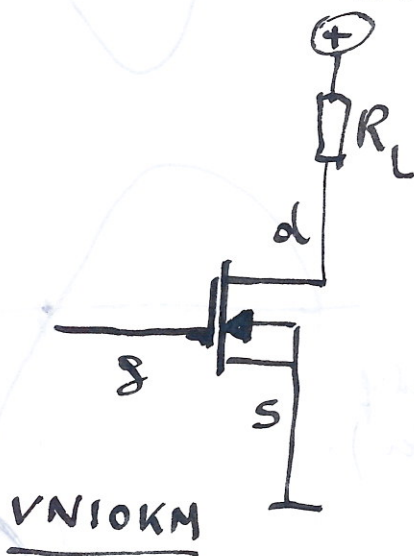
Speakers I



# HEX

- Scenario opstelling

- |  |               |
|--|---------------|
| Mannequin 1: jongentje                                       | P3 - MD-OSC   |
| Mannequin 2: loupe slanke ♀                                  | P6 - stepper. |
| Mannequin 3: loupe ♂   | P2 - alt. vol |
| Mannequin 4: meisje  | P5            |
| Mannequin 5: kleine ♀  | P4            |
| Mannequin 6: <del>GW R</del> <sup>mon.</sup> <del>live</del> | P7 - ♂        |
| Mannequin 7: Mon live  | P1            |
| Mannequin 8: Epson.<br>GW R live                             | 4x20.         |



$$U^2$$

$$\Rightarrow 2\psi$$

$$U_1 \neq U_2$$

100      150

$$\Rightarrow (f_1 + f_2) \neq (f_1 - f_2)$$

$$\frac{U_1}{U_2}$$

$$\frac{U_1}{U_2} \times$$

$$\Rightarrow (f_1 + f_2) \div (f_1 - f_2)$$

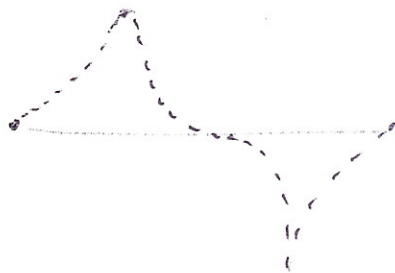
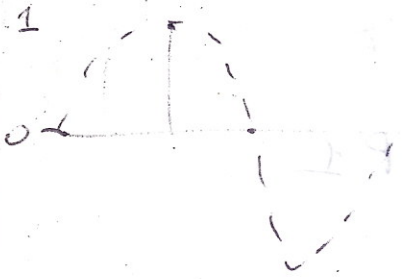
250

~~100~~  
50

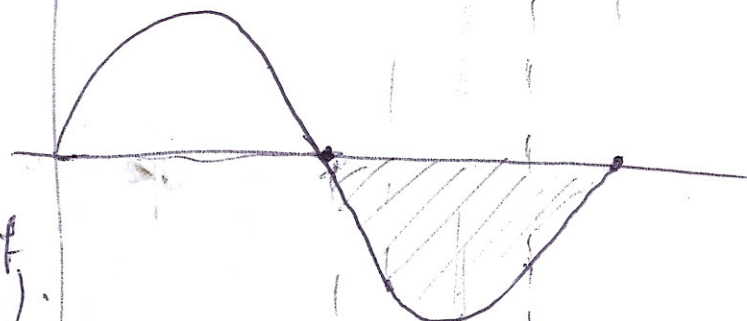
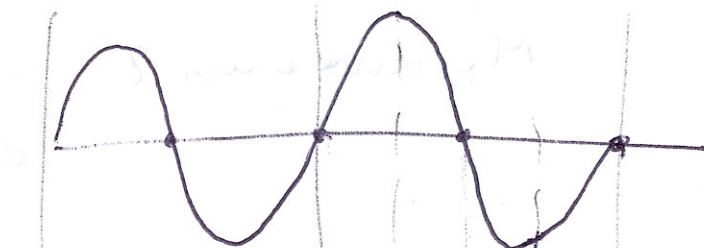
$$250 - 50$$

$$\Rightarrow 200!$$

1, 0,5.



$z$



$z$   
(allée négatif  
à positif)

$z/x$

