

ДОДЕКАДЕНТ

K4Z12 - Y60/Q1 - VCO

1971

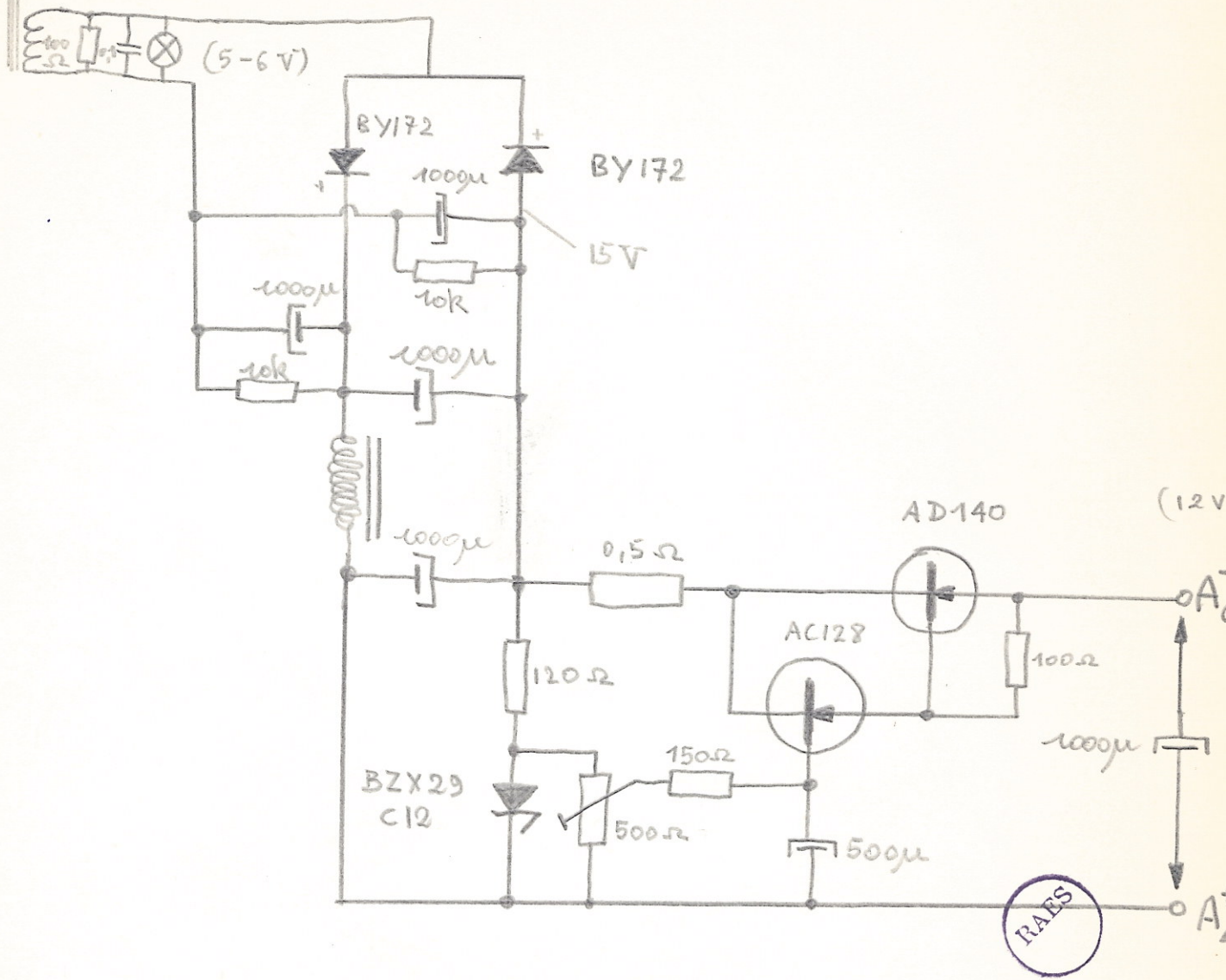
ontwerp
bouwplan
&
gebruik v/d
dodekadent.

logos
werkgroep voor geëngazjeerde
avant-garde muziek



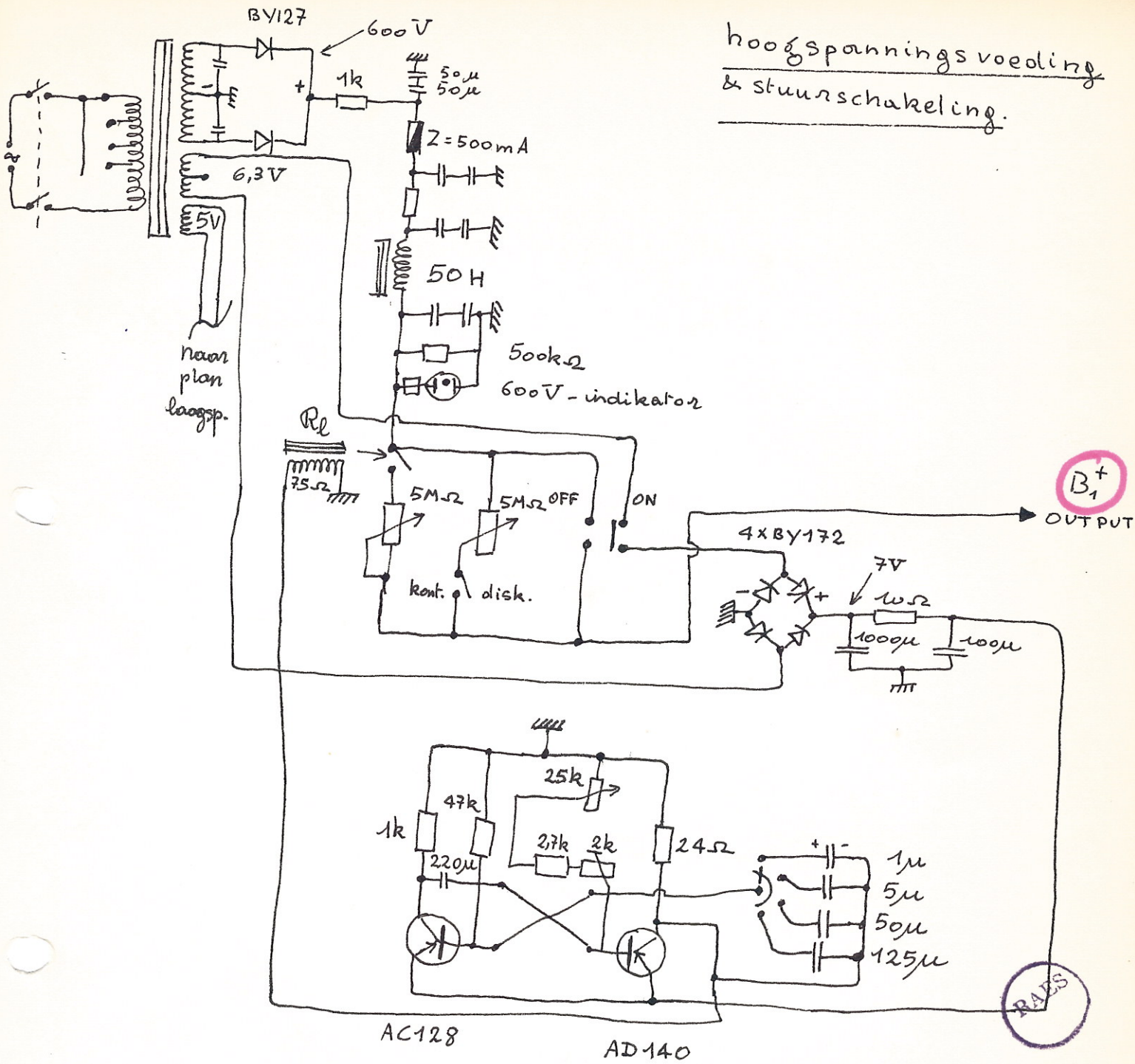
[Handwritten signature]

laagspanningsvoeding
voor modules.



logos

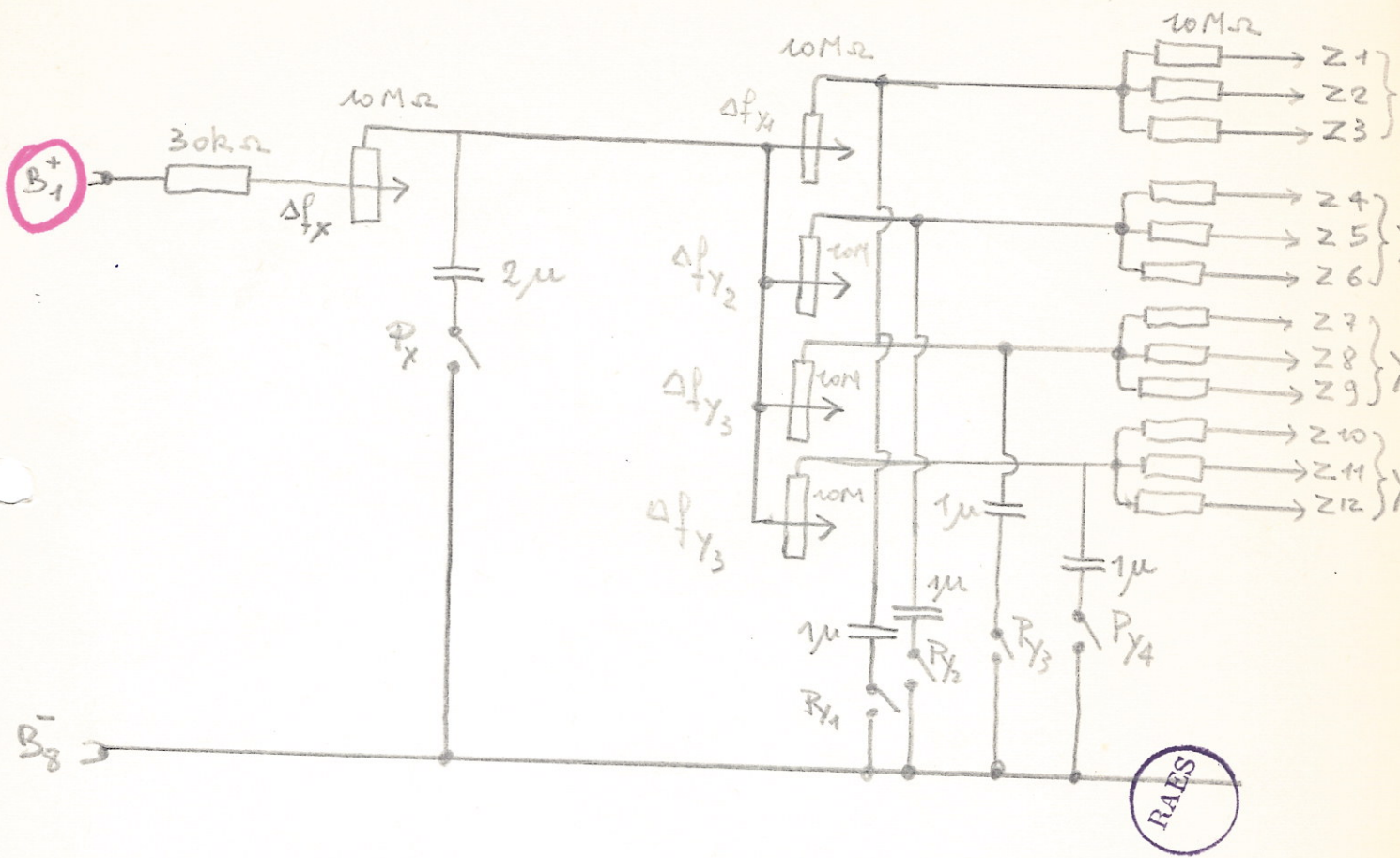
werkgroep voor geëngazjeerde
avant-garde muziek



logos
werkgroep voor geëngazjeerde
avant-garde muziek

08.07.72

hoogspannings distribusie
voor generatorprints.

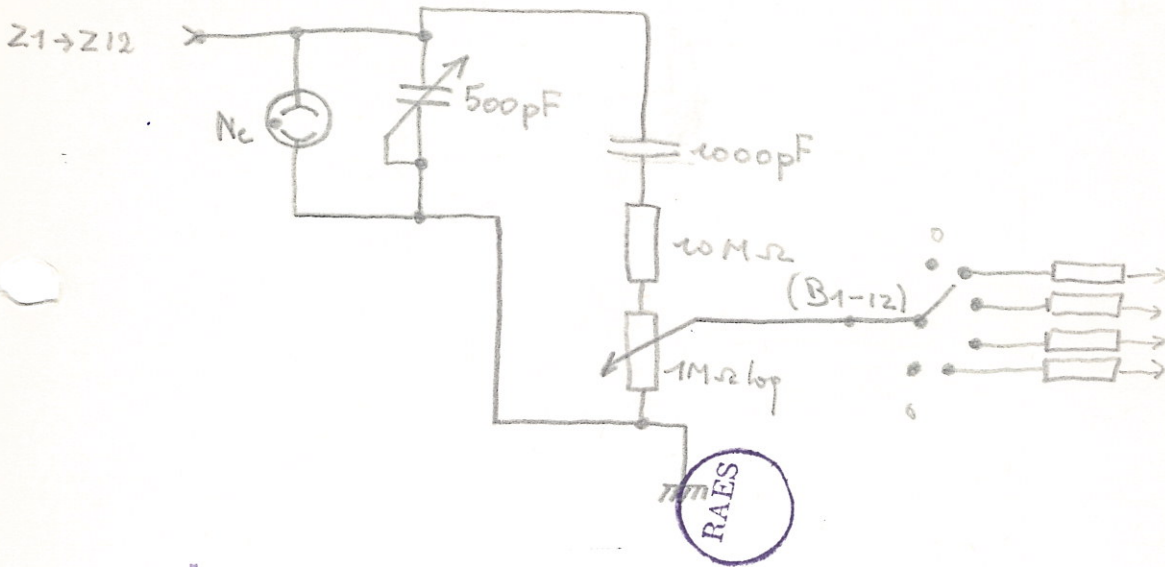


logos

werkgroep voor geëngazjeerde
avant-garde muziek

Generator prints

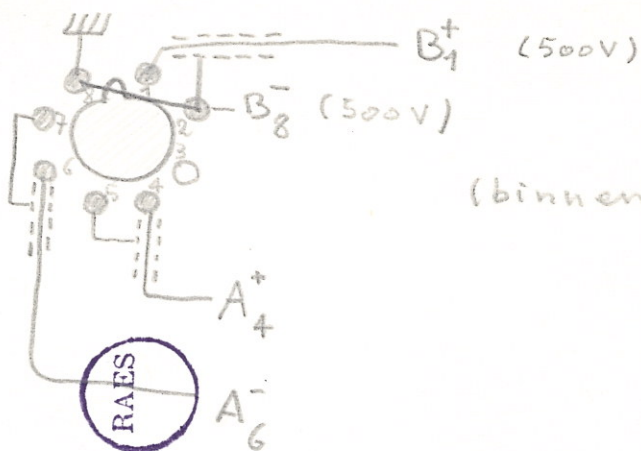
(12x identities)



logos

werkgroep voor geëngazjeerde
avant-garde muziek

plug kode & kabelkode



(binnenkant ♀ sjassis)

- { 1 blauw (+500)
- { 2 wit = 8
- 3 bruin
- { 4 oranje (+12)
- { 5 wit
- { 6 groen (-12)
- { 7 wit
- 8 afscherming

logos

werkgroep voor geëngazjeerde
avant-garde muziek

- aanwijzingen naar vlotte bediening
 van de generator.



- het oppo-nisch oënt 60" tijd te hebben voordat
 er een stabilisatiepunt is.

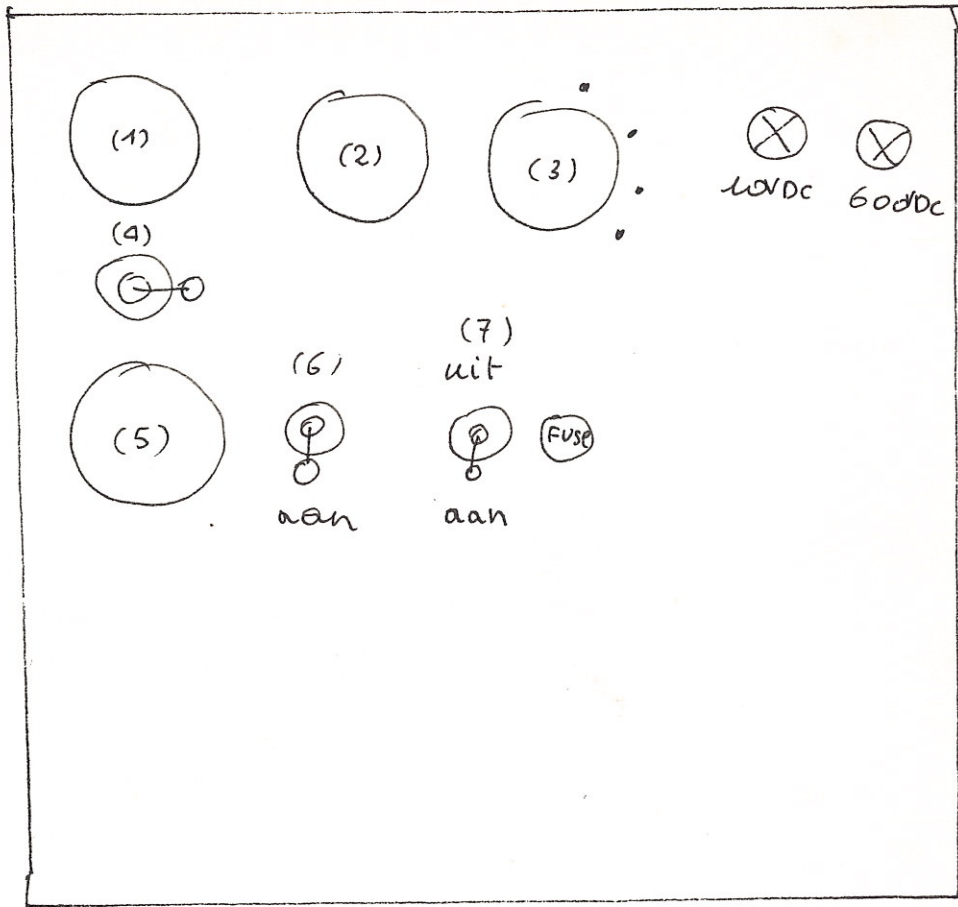
- bij inschakelen de ΔP_{tot} knopje, steeds
 op $\frac{1}{3}$ laagste frequentie laten, dit
 om het verbranden van de
 potentiometers tijdelijk
 opladen der condensatoren
 te vermijden.

- signaallampjes: blauw: 500V
 H.T. een
 groen: 11V
 B.T. een

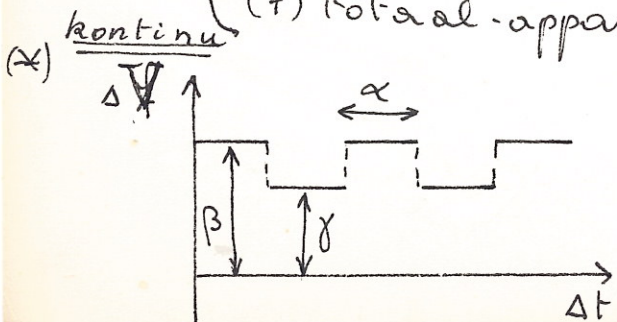
- zedering: 0.5 A

- de verbindingskabel tussen de generator &
 de plijp 'uit-trekken'. Nooit een de draad
 trekken.

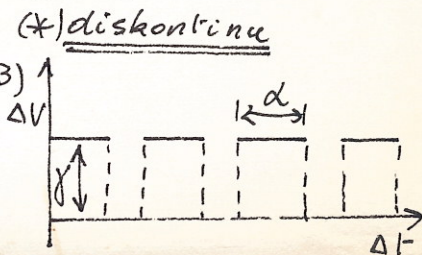
voor aanzicht & bediening
voedings module doorkader



- (1) regeling bovenste grens v/d voonhoogte bij gebruik stuurschakeling (met (6) op aan) (*)
- (2) fijn regeling tempo stuurschakeling
- (3) grof " " "
- (4) kontinu of diskontinu (*)
- (5) regeling ondergrens (cf. (1))
- (6) aan-uit-schakelaar stuurschakeling
- (7) totaal-apparaat aan-uit-schakelaar.



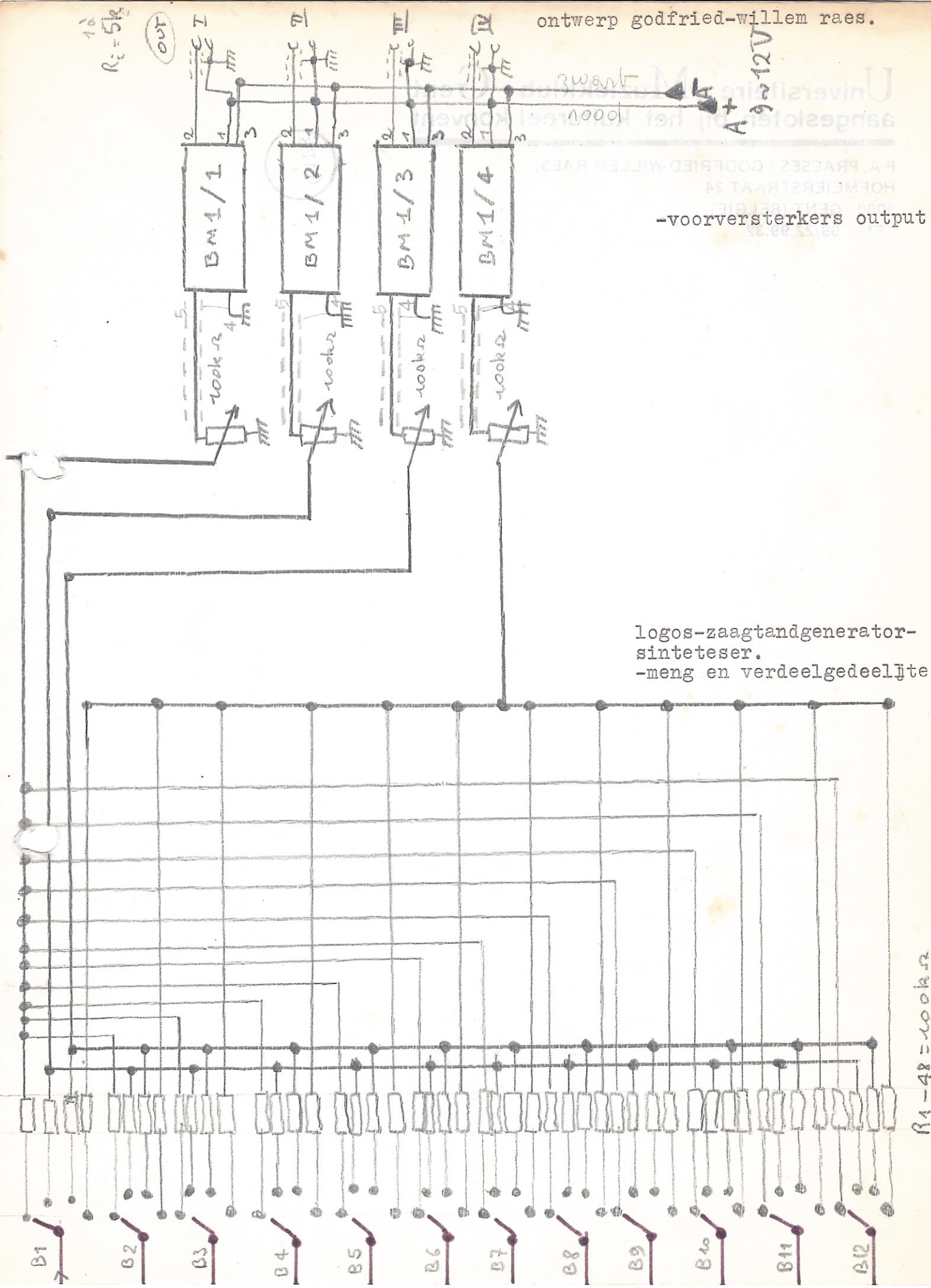
α instellen met (2) & (3)
 β " " " " (1)
 γ " " " " (5)



$R_i = 5k\Omega$

OUT

$A^+ 9 \sim 12V$



-voorversterkers output

logos-zaagtandgenerator-sintetiser.
-meng en verdeelgedeelte.

$R1-48 = 100k\Omega$

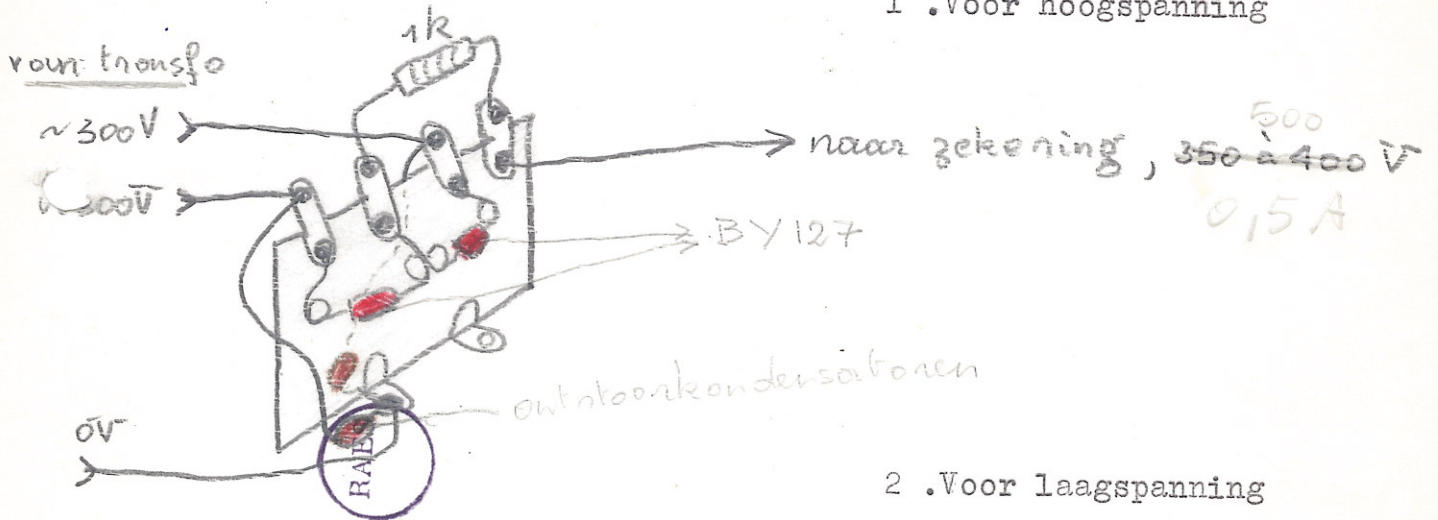
Universiteire Muzieklub Gent aangesloten bij het kultureel konvent

P.A. PRAESES : GODFRIED-WILLEM RAES.
HOFMEIERSTRAAT 24
9000 - GENT (BELGIE)
TEL : 09/22.99.32

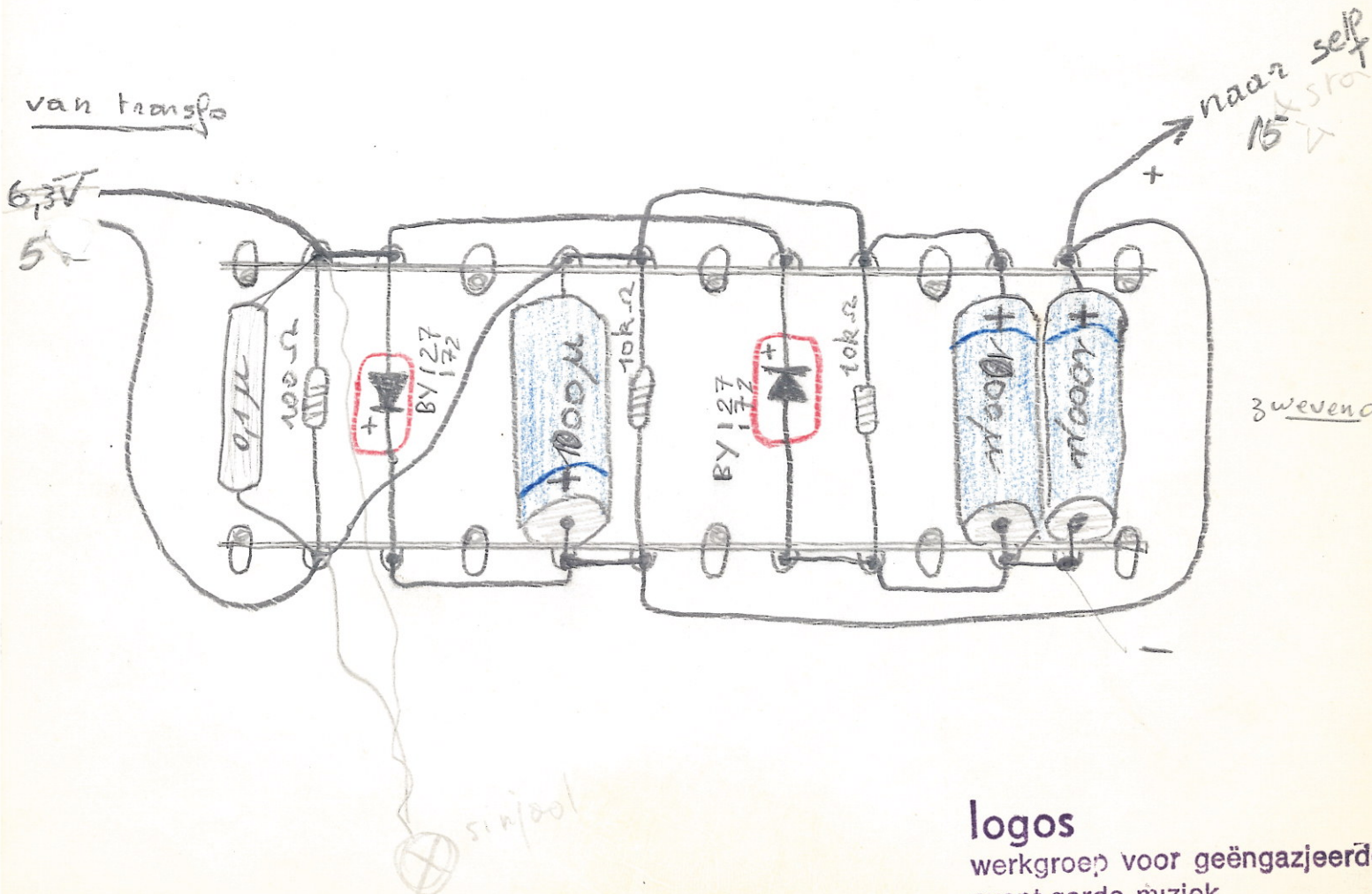
Bouwtekening I

Gelijkrichterschakeling

I .Voor hoogspanning



2 .Voor laagspanning



logos

wergroep voor geëngazjeerd
avant-garde muziek

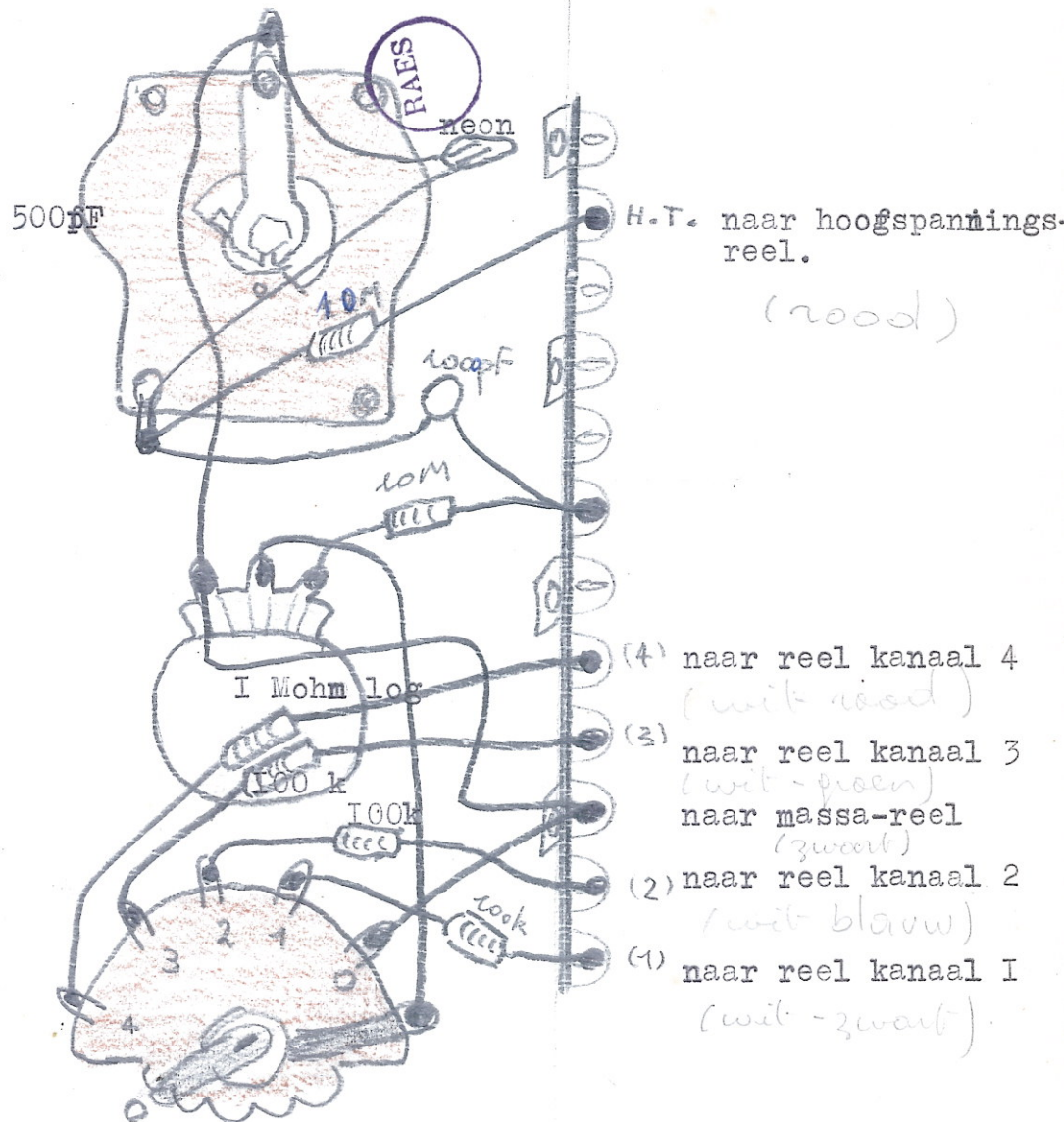
Universiteire Muziekclub Gent aangesloten bij het cultureel konvent

P.A. PRAESES : GODFRIED-WILLEM RAES.
HOFMEIERSTRAAT 24
9000 - GENT (BELGIE)
TEL. : 09/22.99.32

opbouwschema van de
generatorcellen

12 X identiek te bouwen.

binnenaanzicht boven

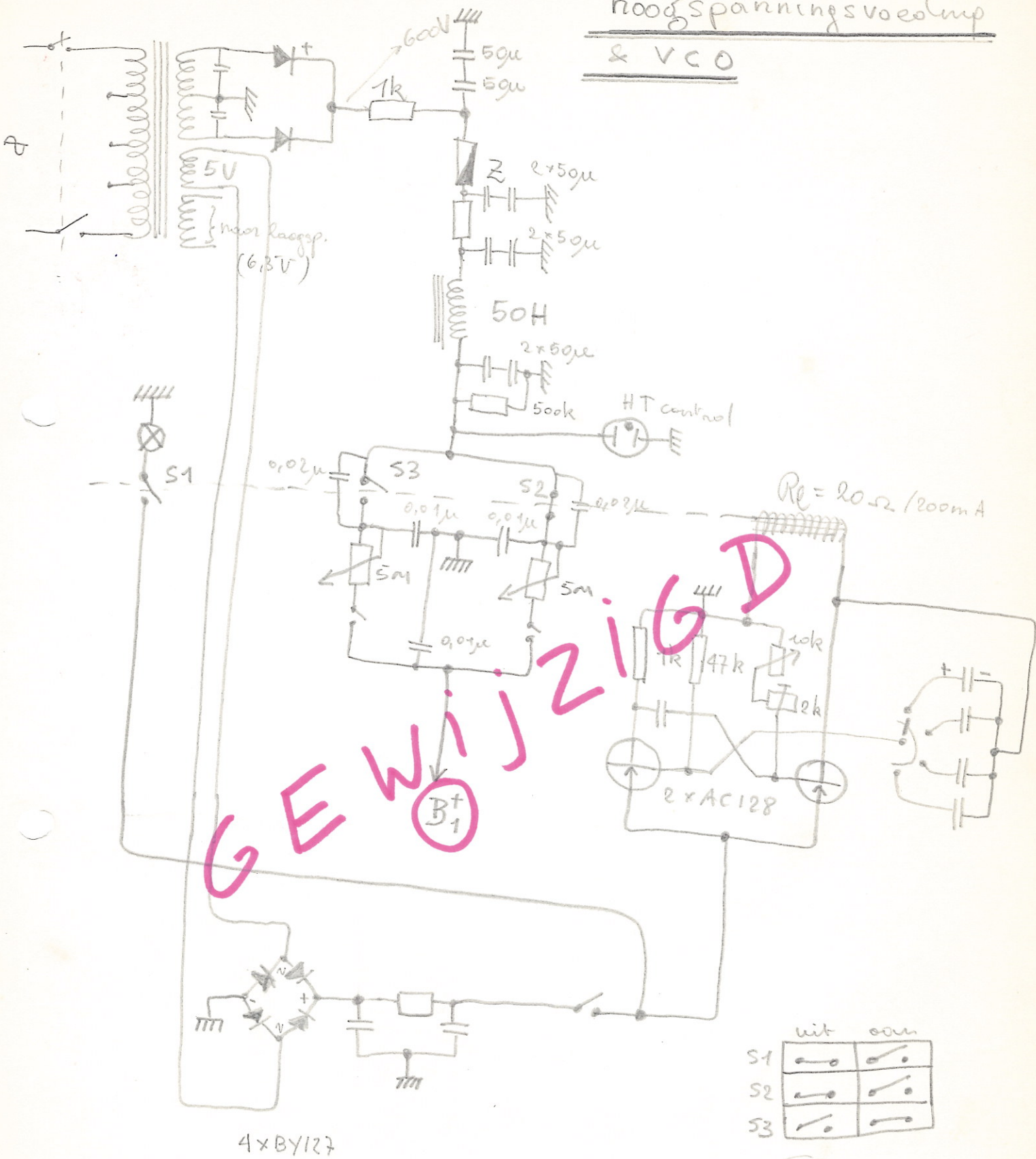


binnen-aanzicht onder

logos

werkgroep voor geëngazjeerd
avant-garde muziek

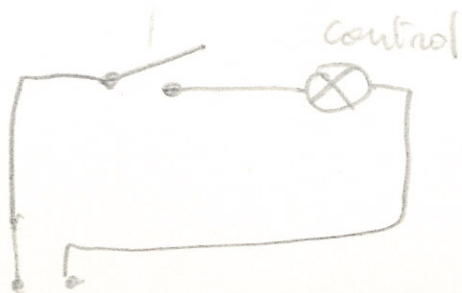
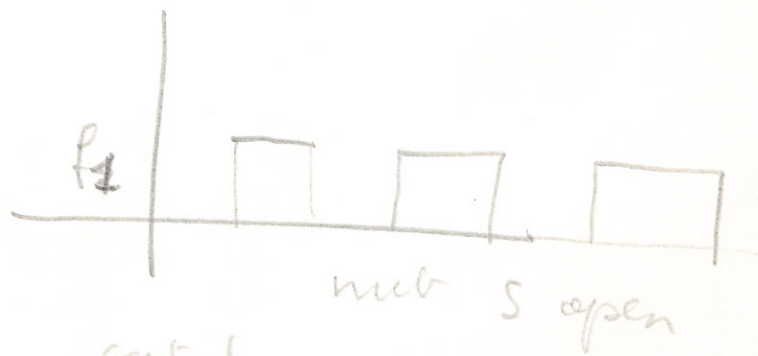
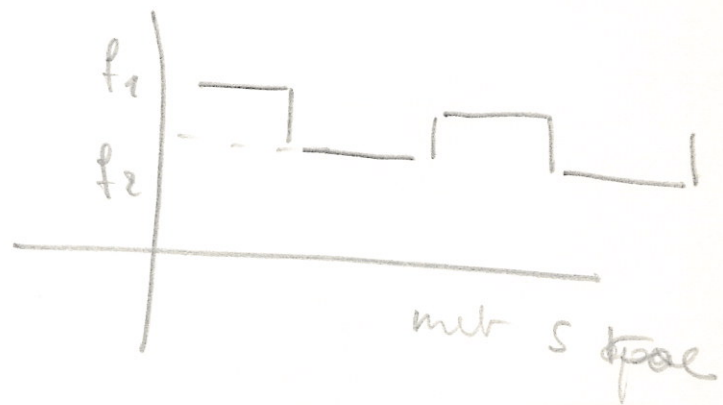
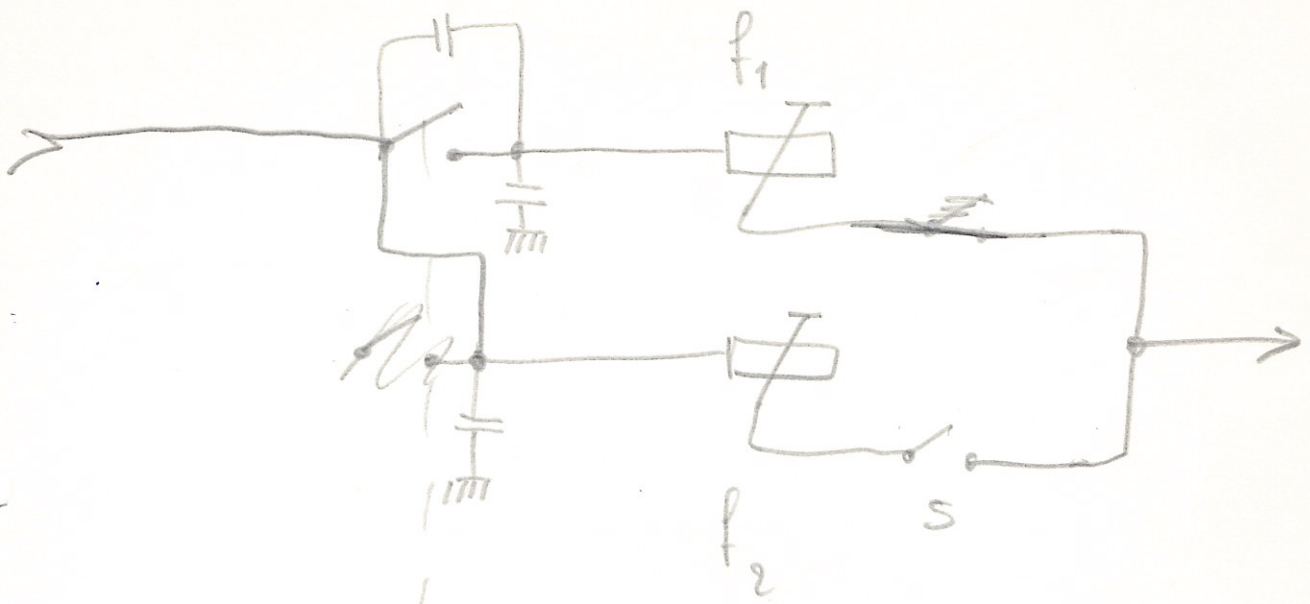
hoogspanningsvoeding
& VCO



GEWIJZIGD

	wit	aan
S1		
S2		
S3		

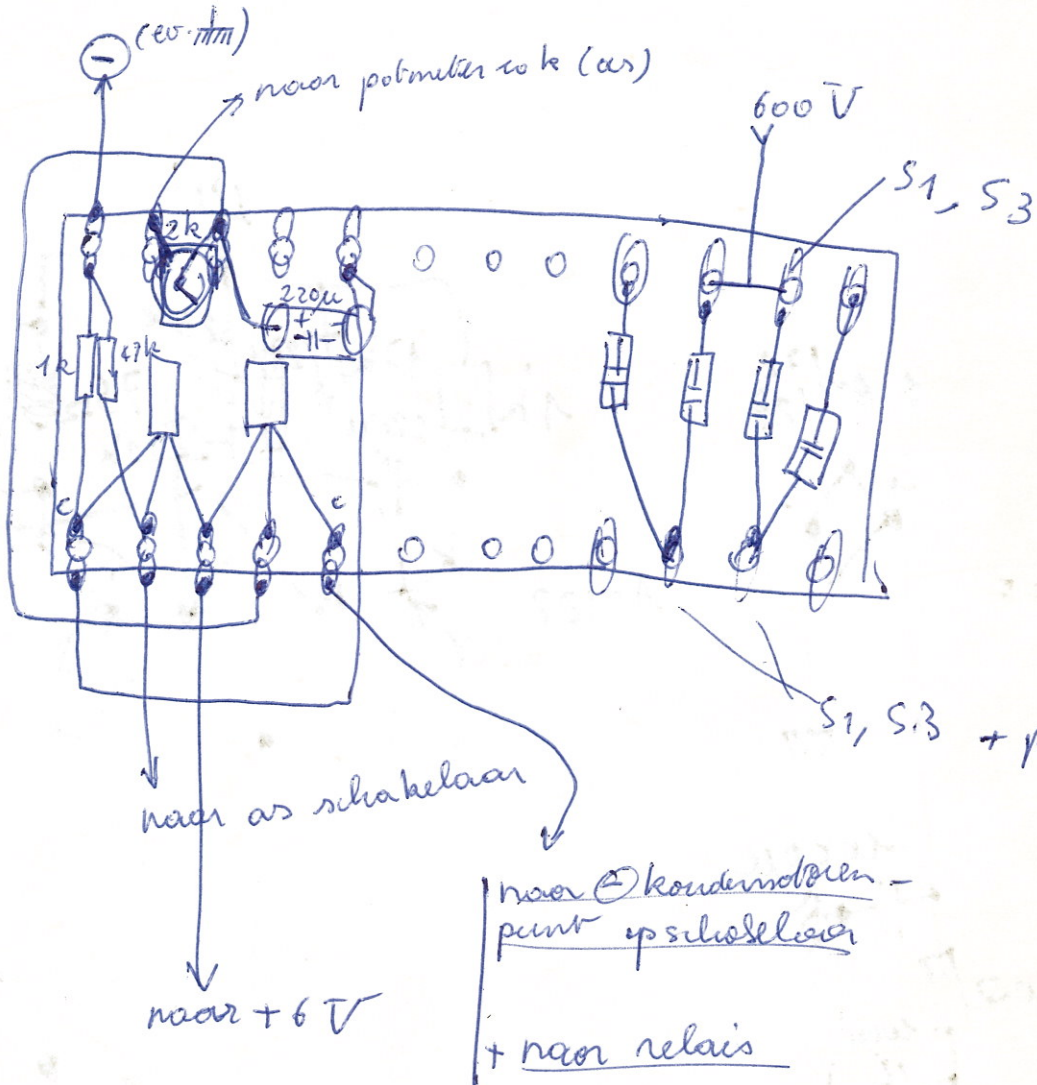
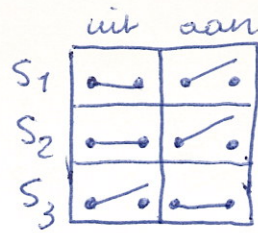
Re



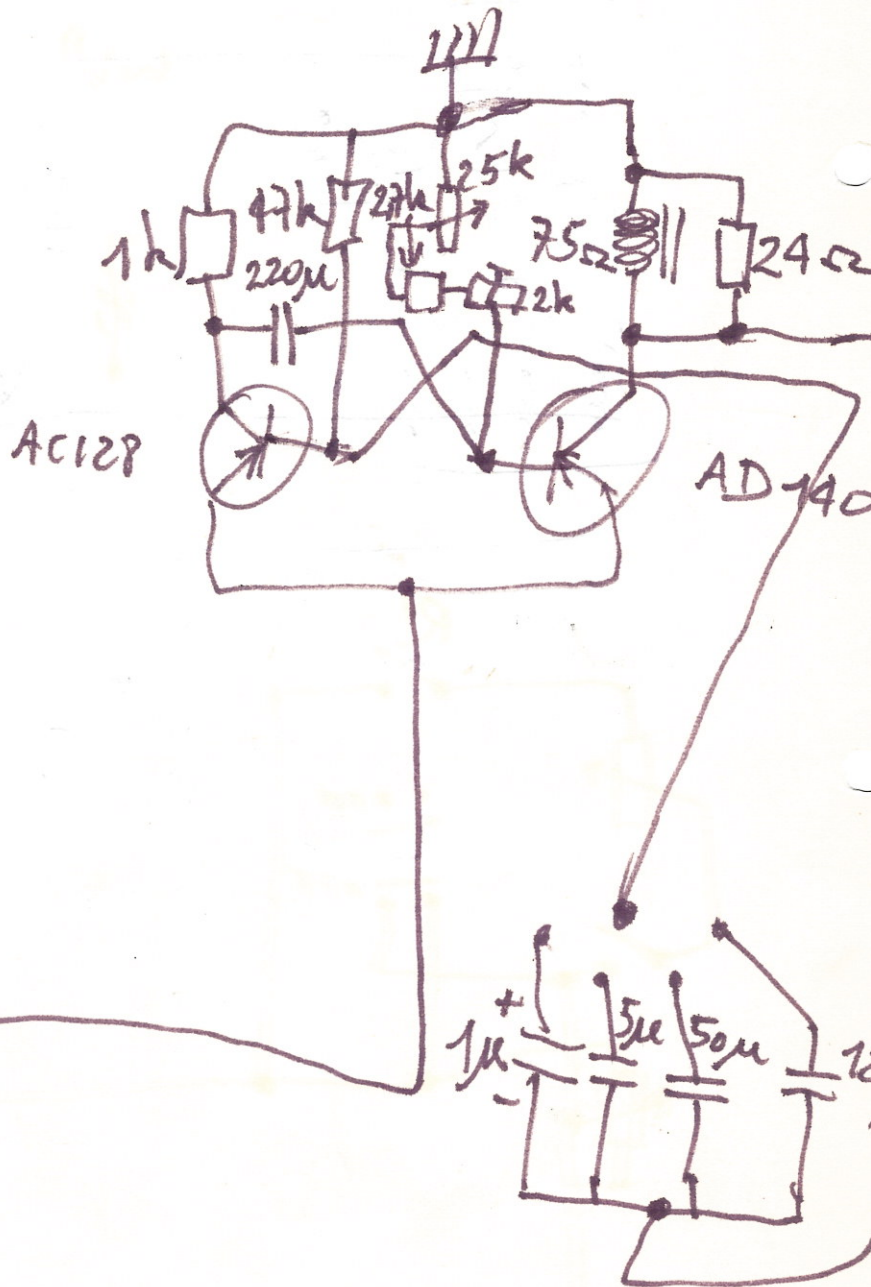
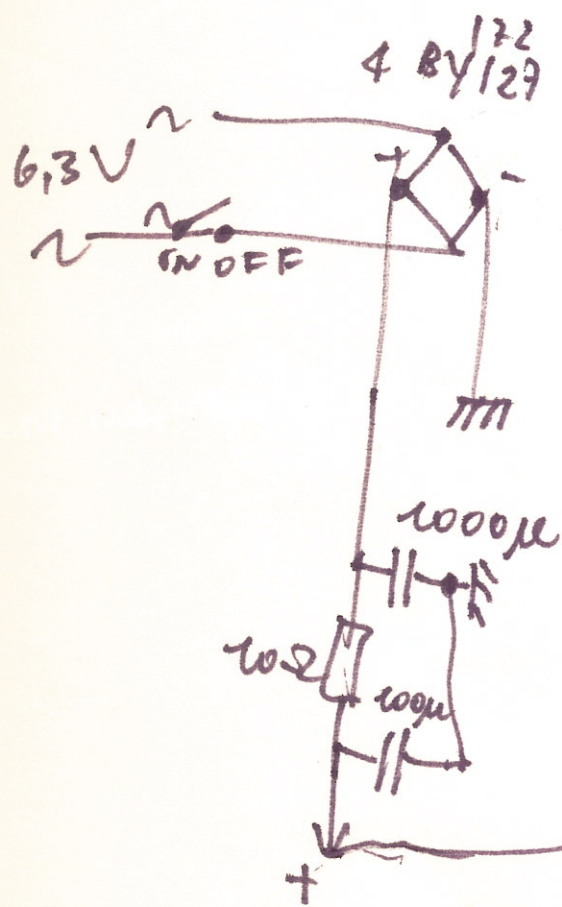
Relais ca. 20 Ω

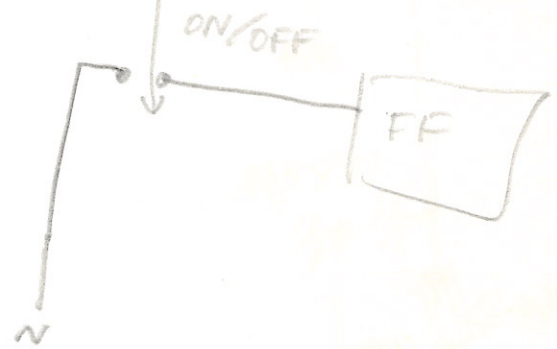
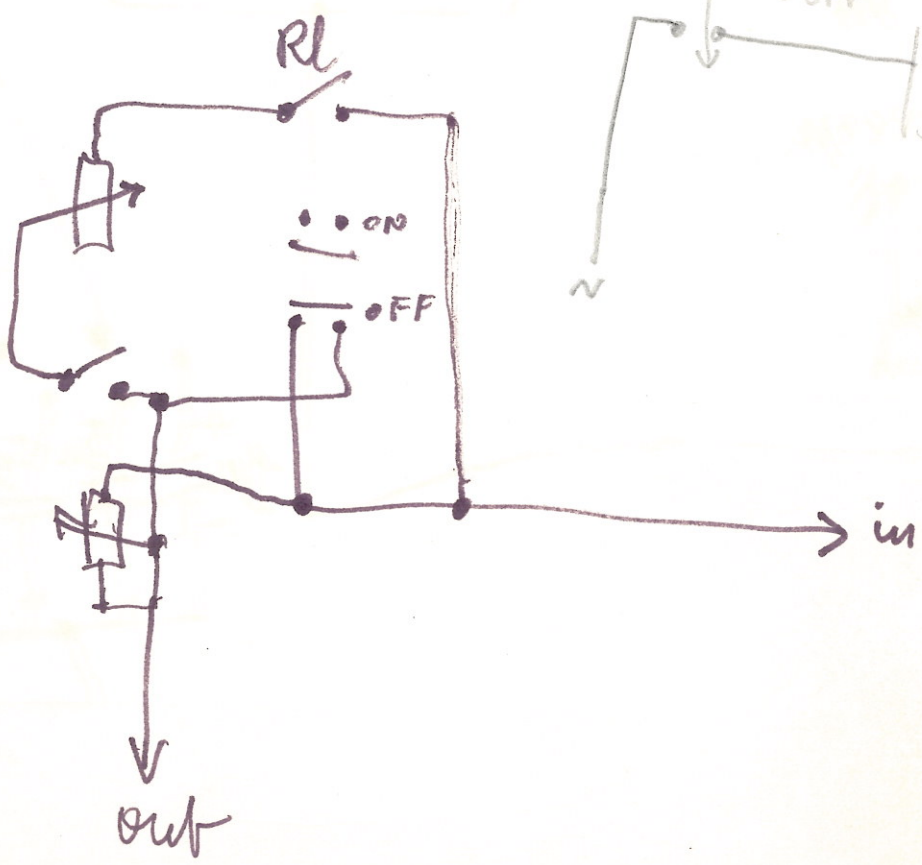
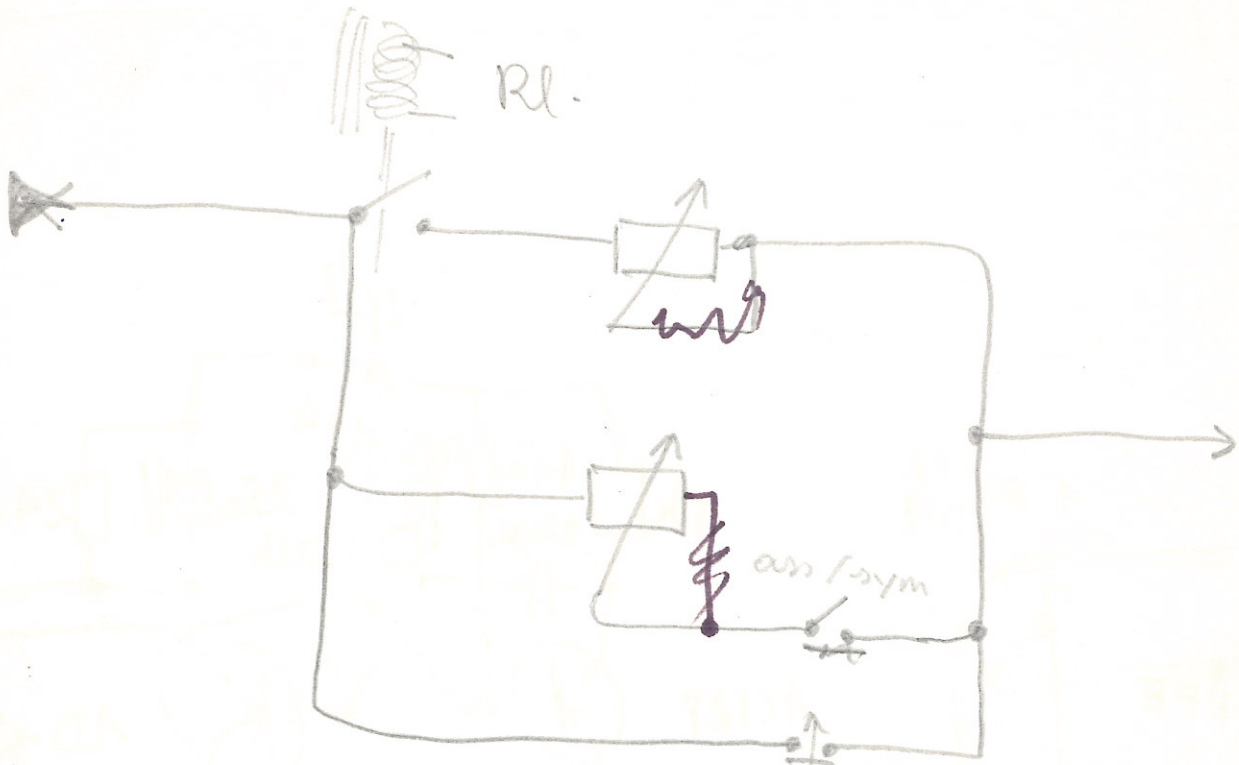
aanbrekstroomb 200 mA

→ minimaal 4 V



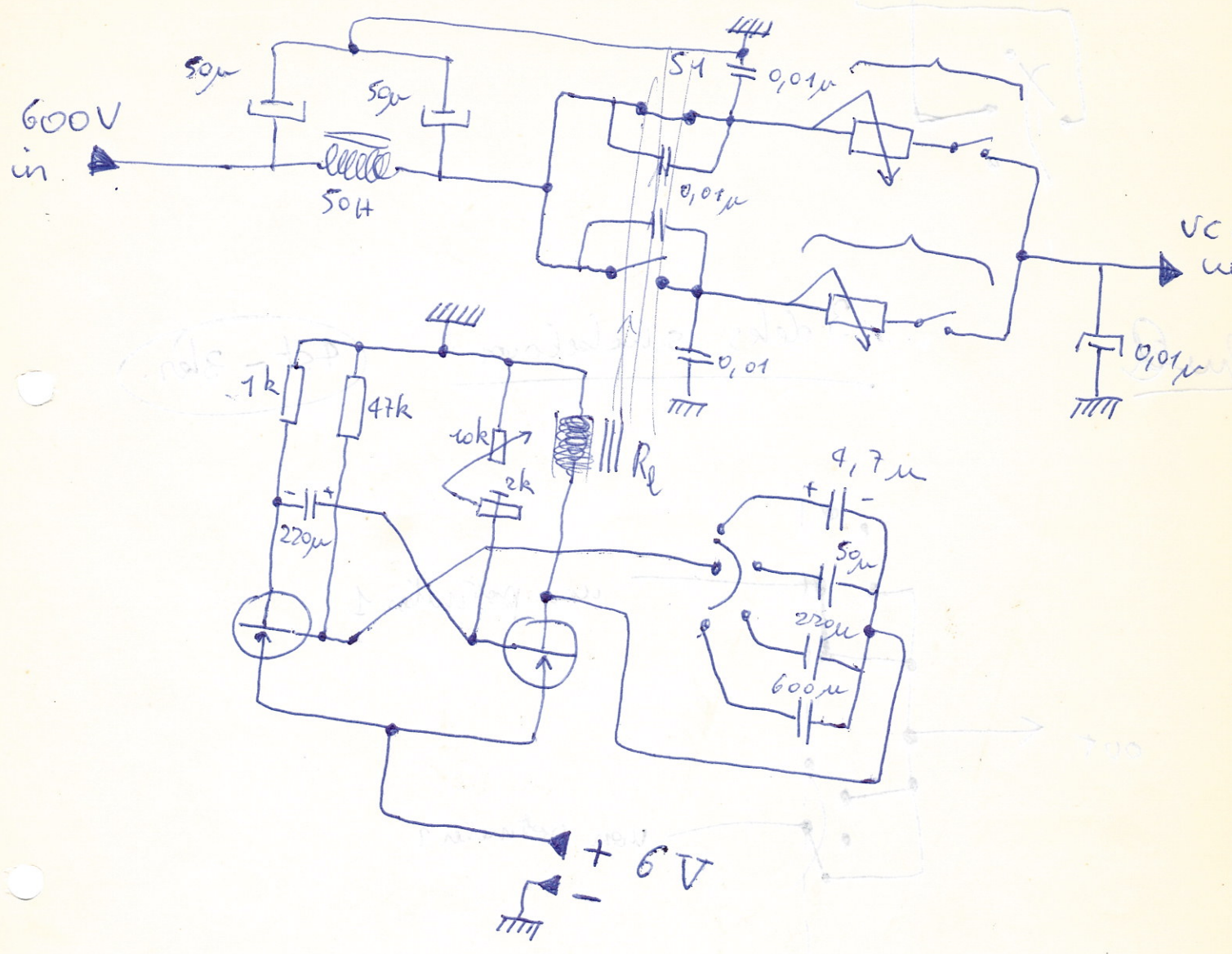
S₁, S₃ + potmeter 5M





cas - 105

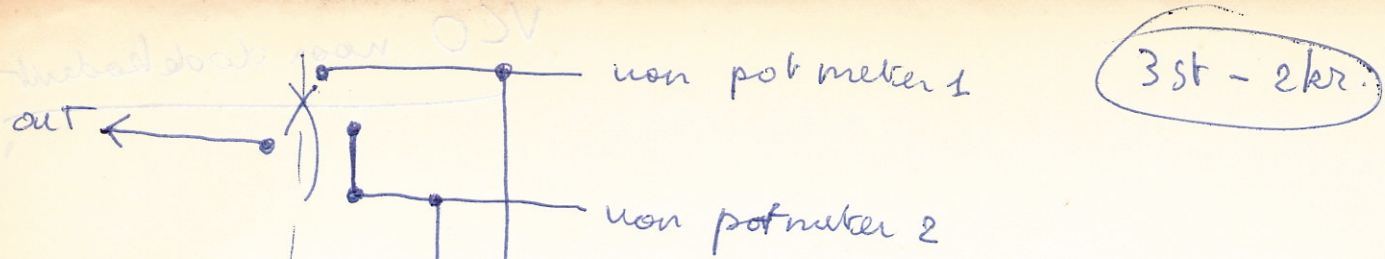
VCO naar doorkader



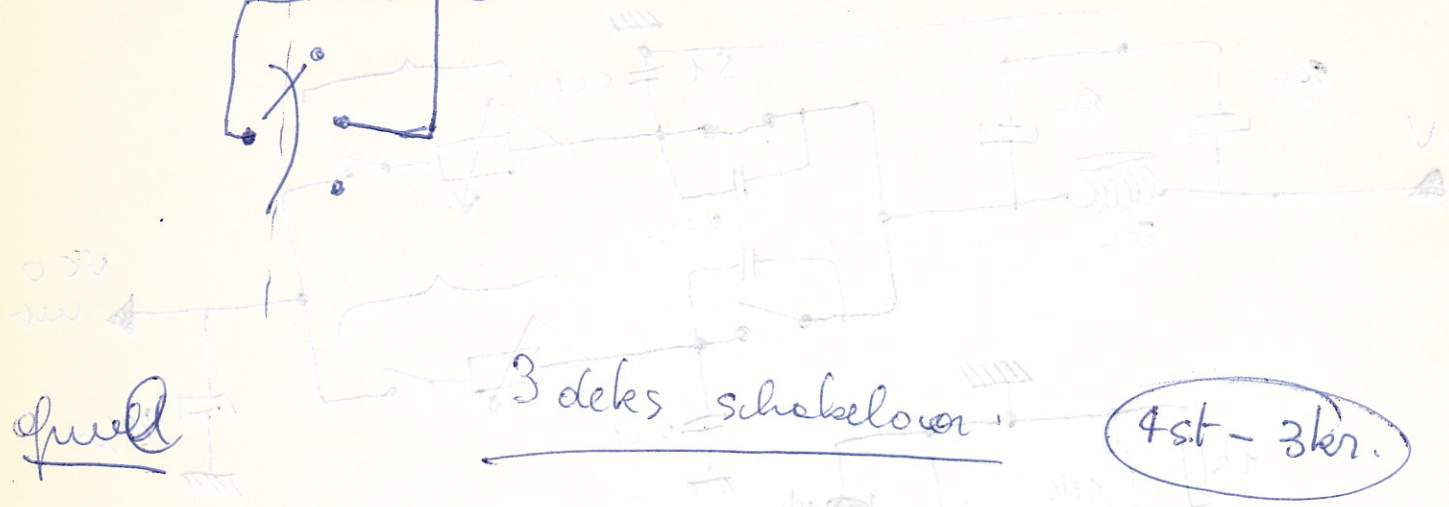
R_{rel} : 20Ω
 $I_a = 200 \text{ mA}$
 by 4V

	uit	aan
S1		
S2		
S3		

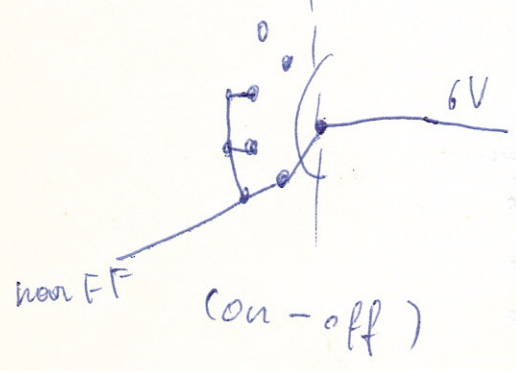
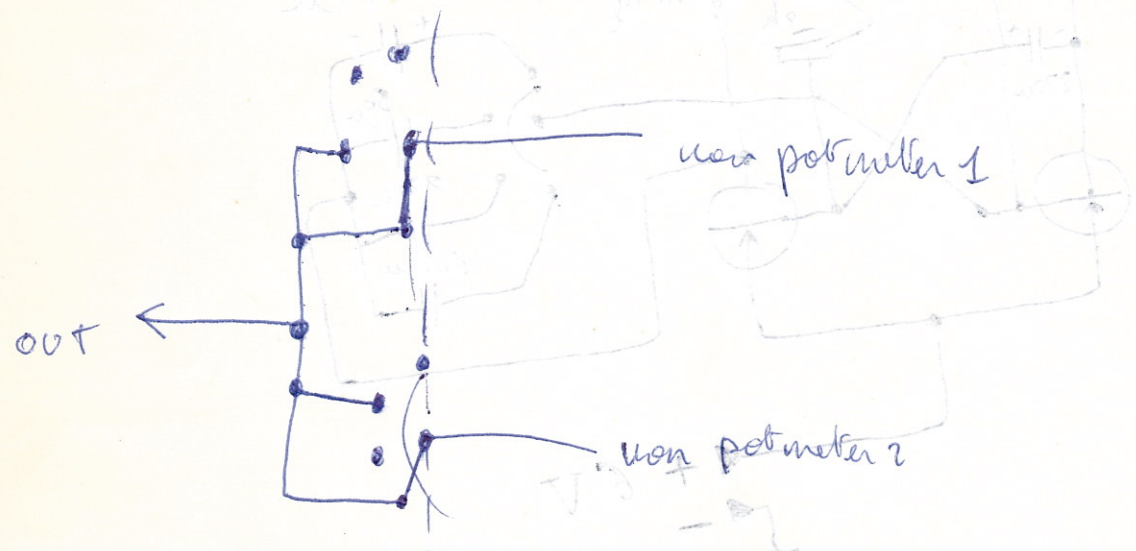
$\frac{1}{25,0}$
 2 AS.



3st - 2kr.



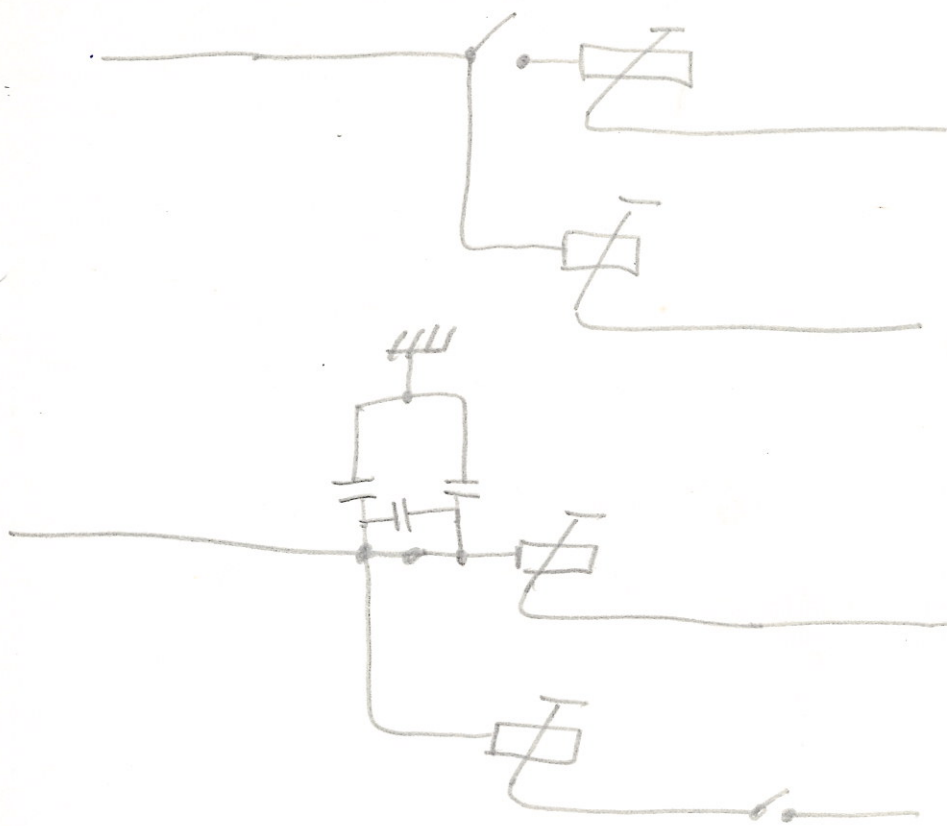
4st - 3kr.

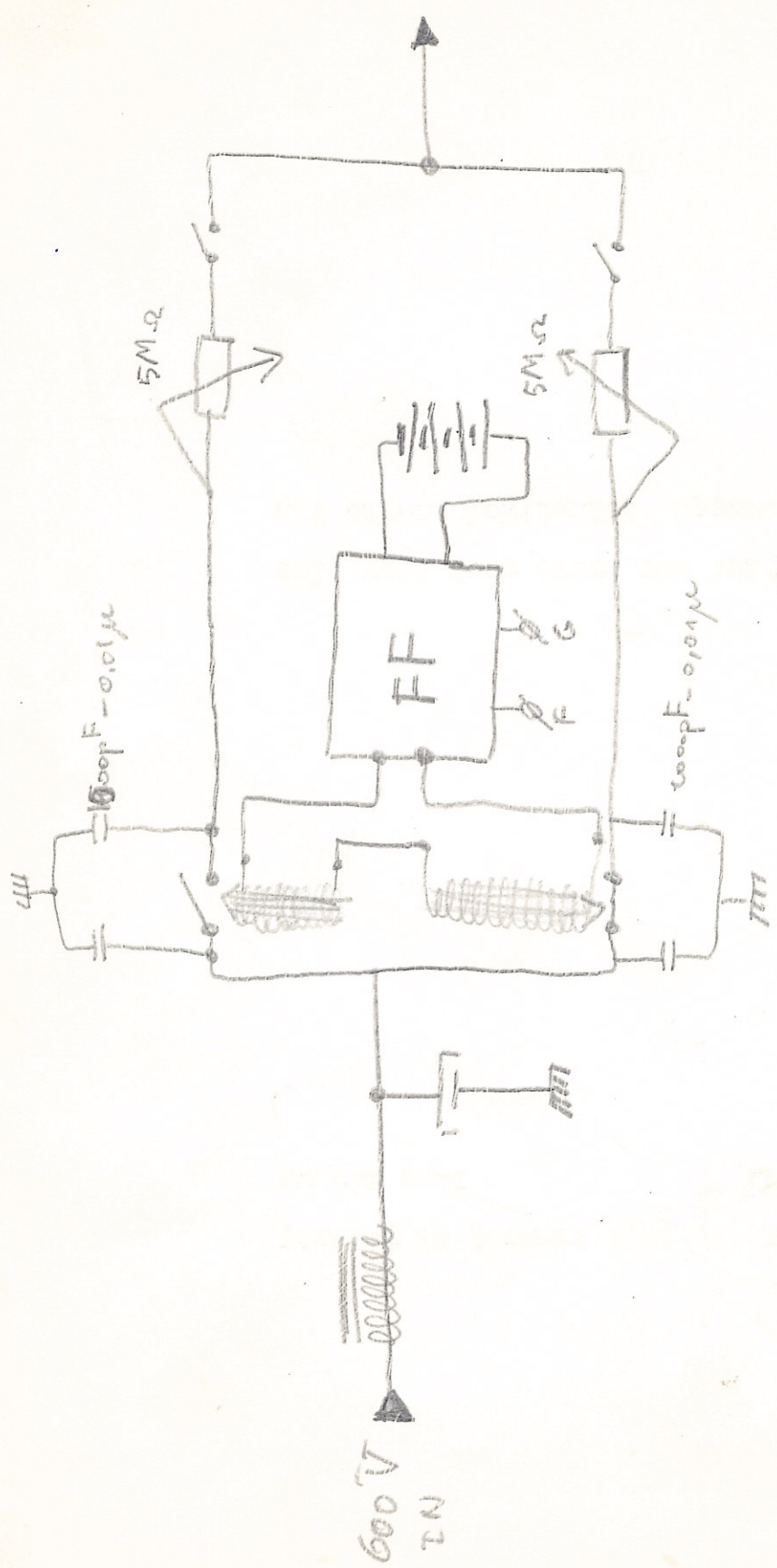


0,250 A
6V

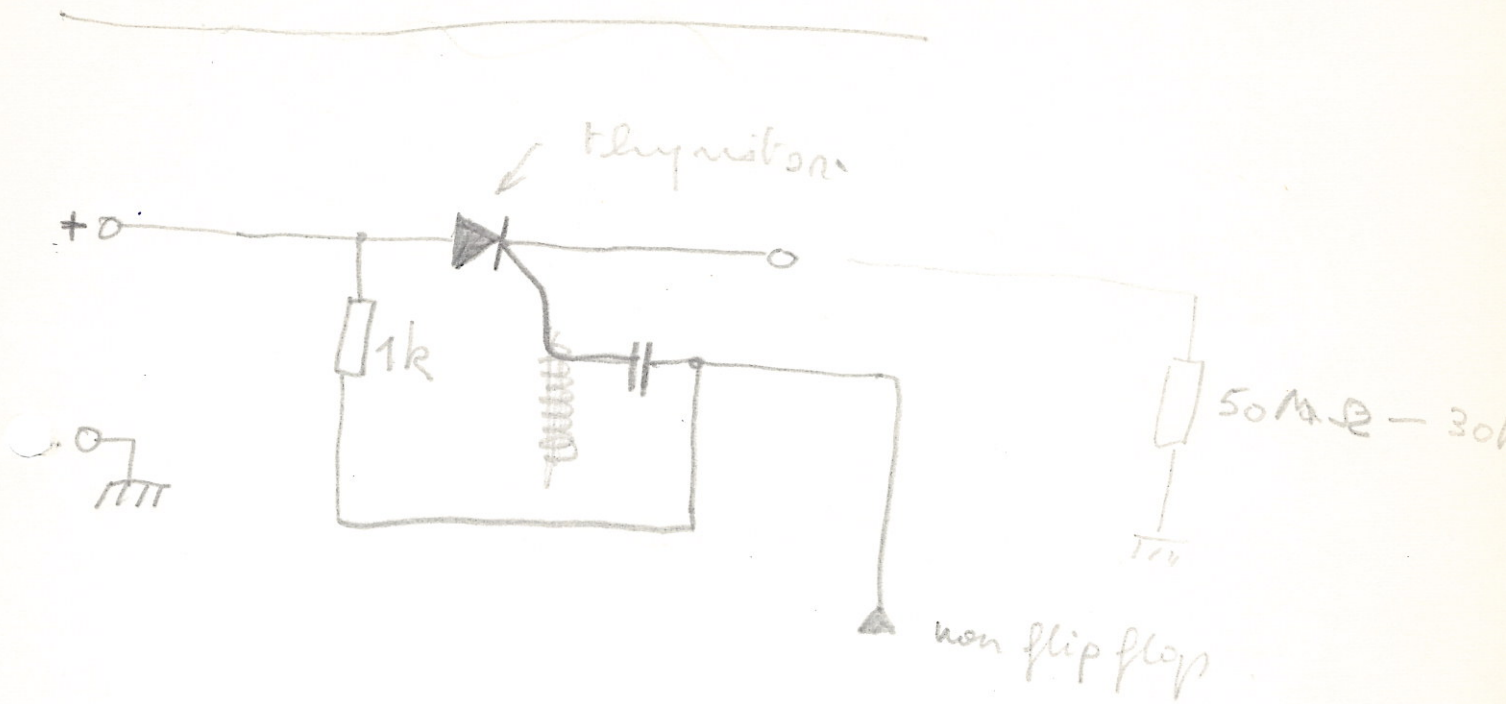
$$\frac{6}{0,25}$$

24 S





Alternating Relay (?)



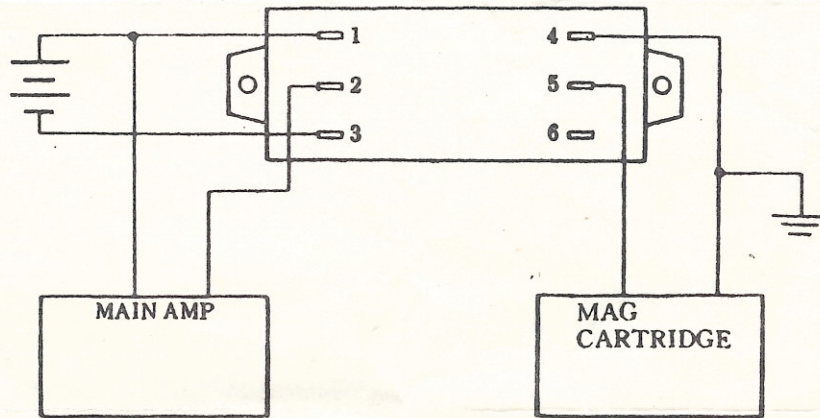
INSTRUCTIONS FOR PHONO PRE-AMPLIFIER (BM-1)

As this BLOCK MODULE is capable of amplifying MAG type cartridge up to 0.5V ~ 1.0V and has the curve characteristic of RIAA, it is capable of having a characteristic of being flat. And when you make for yourself a stereo AMP, you can make easily a Hi-Fi AMP having almost no noise by using this as a PRE-AMP.

SPECIFICATIONS

INPUT IMPEDANCE	:	100 K Ω
GAIN	:	28 DB
MAXIMUM OUTPUT	:	3 V
MAXIMUM INPUT	:	50mV
DISTORTION	:	0.15 % (at 1 V LEVEL)
FREQUENCY RESPONSE	:	RIAA
POWER SUPPLY	:	9 V ~ 12 V DC

logos
 werkgroep voor geëngazjeerde
 avant-garde muziek

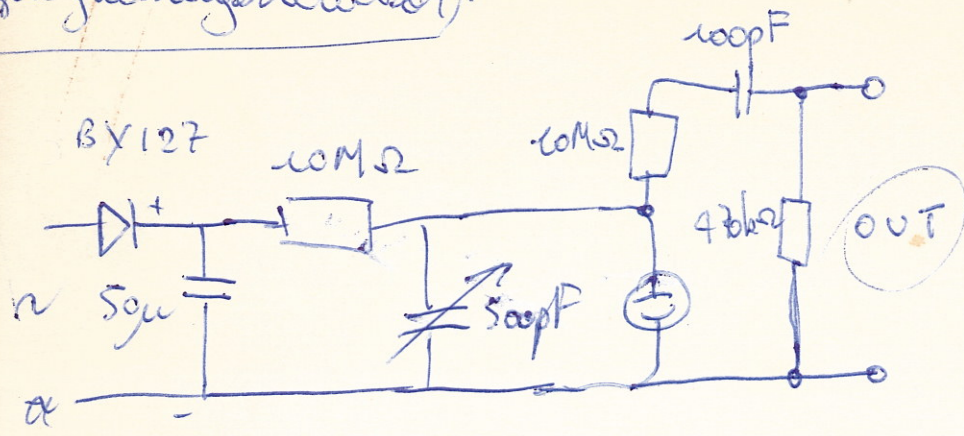


- | | |
|-----------|----------|
| 1. +DC | 4. GND. |
| 2. OUTPUT | 5. INPUT |
| 3. -DC | 6. |

BM-1	PHONO PRE-AMPLIFIER
BM-2	TAPE "
BM-3	MIC "
BM-4	0.3W POWER AMPLIFIER
BM-21	FM TRANSMITTER

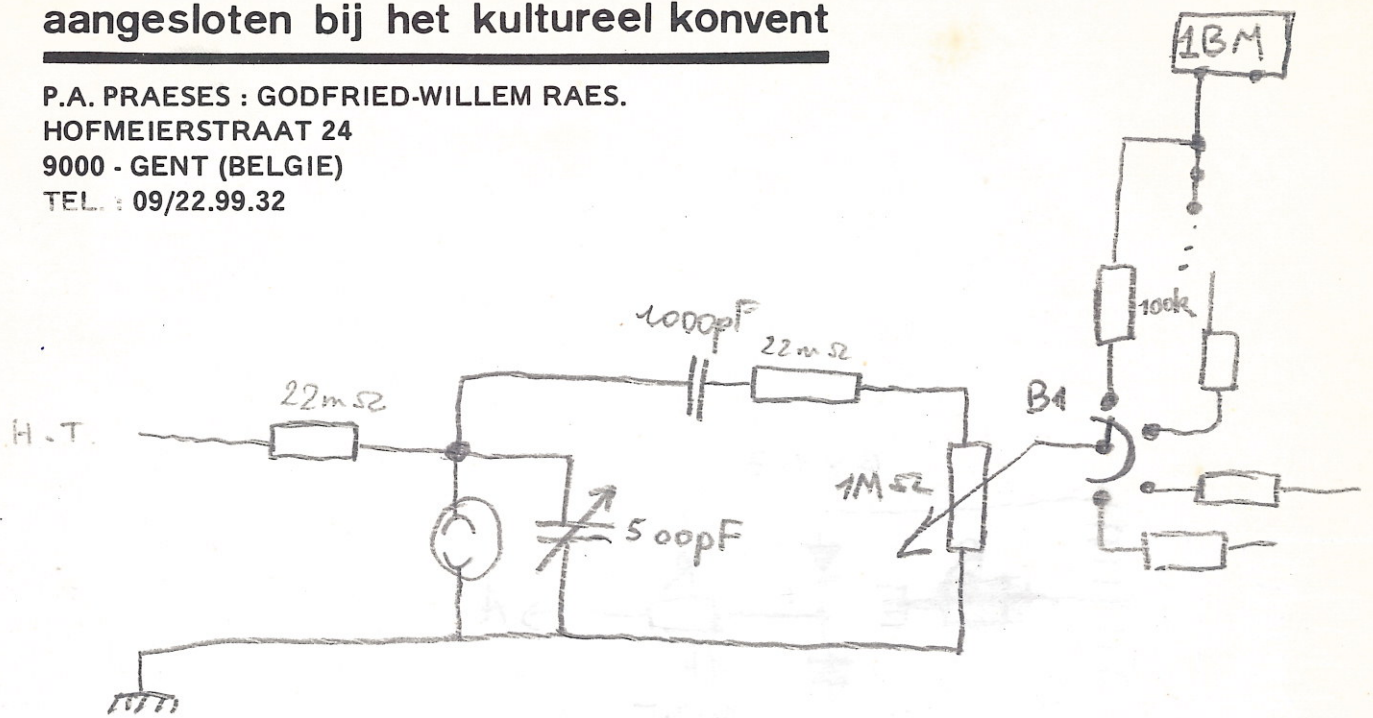
JAPAN

300pt hand generator

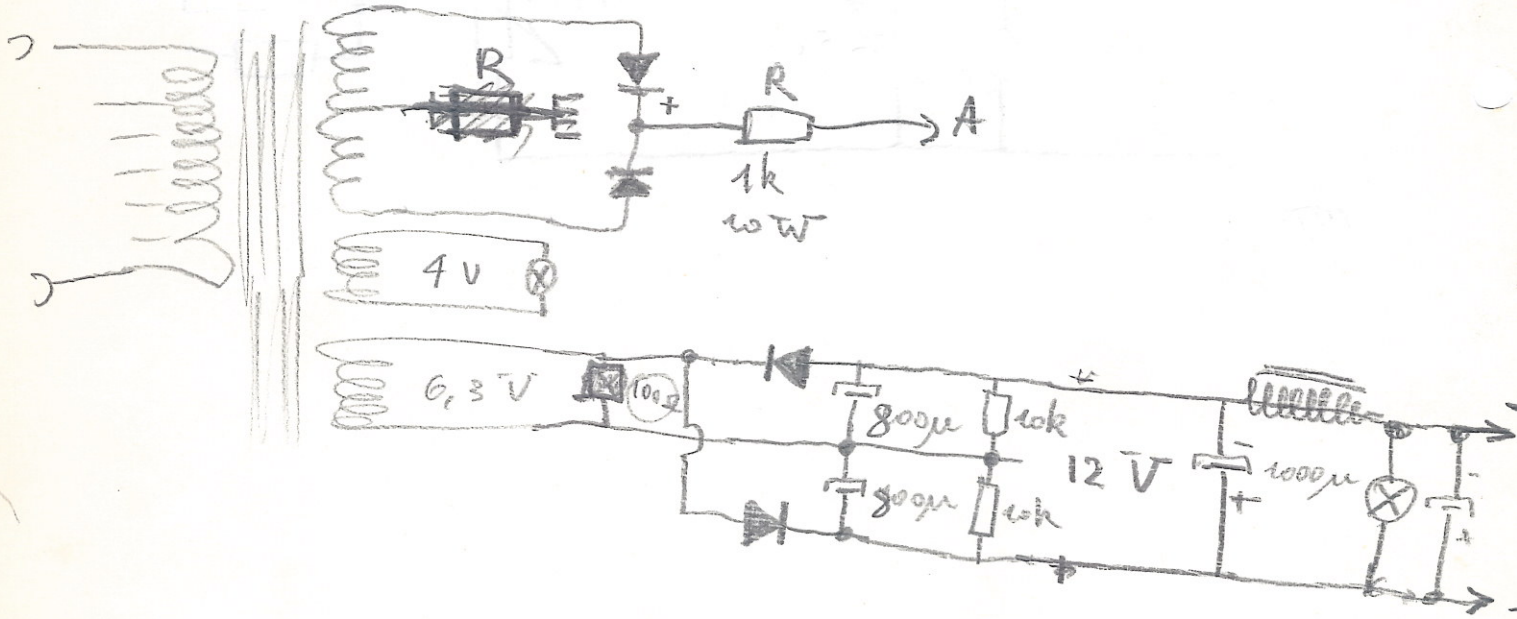


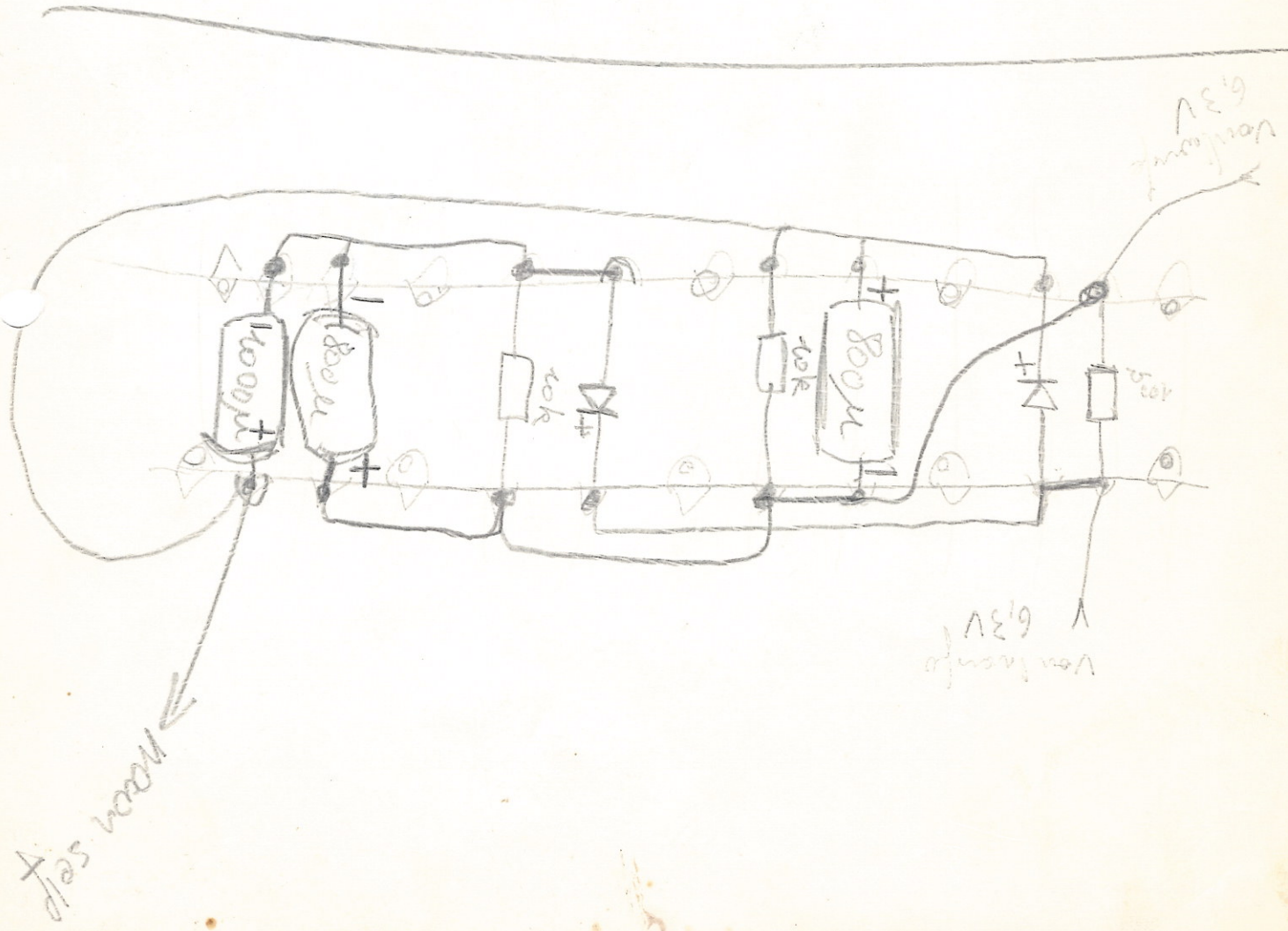
Universiteire Muzieklub Gent aangesloten bij het cultureel konvent

P.A. PRAESES : GODFRIED-WILLEM RAES.
HOFMEIERSTRAAT 24
9000 - GENT (BELGIE)
TEL. : 09/22.99.32



BY 127





$$30000 \frac{1}{\text{A}}$$

$$U = 300 \text{ V}$$

$$R = R_x$$

$$P = 3 \text{ W} = 3 \text{ VA}$$

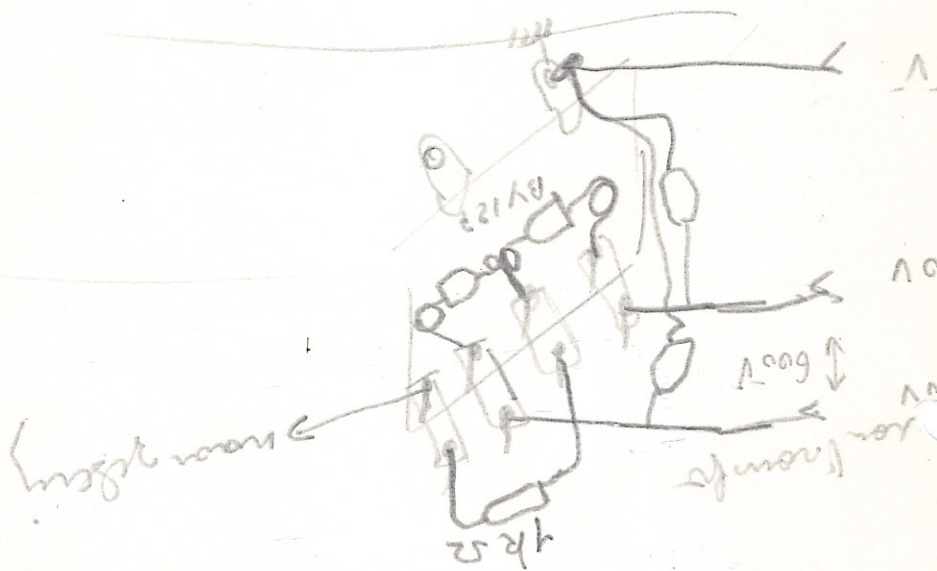
$$I = \frac{3 \text{ V} \cdot \text{A}}{300 \frac{\text{V}}{100}} = 10 \text{ mA}$$

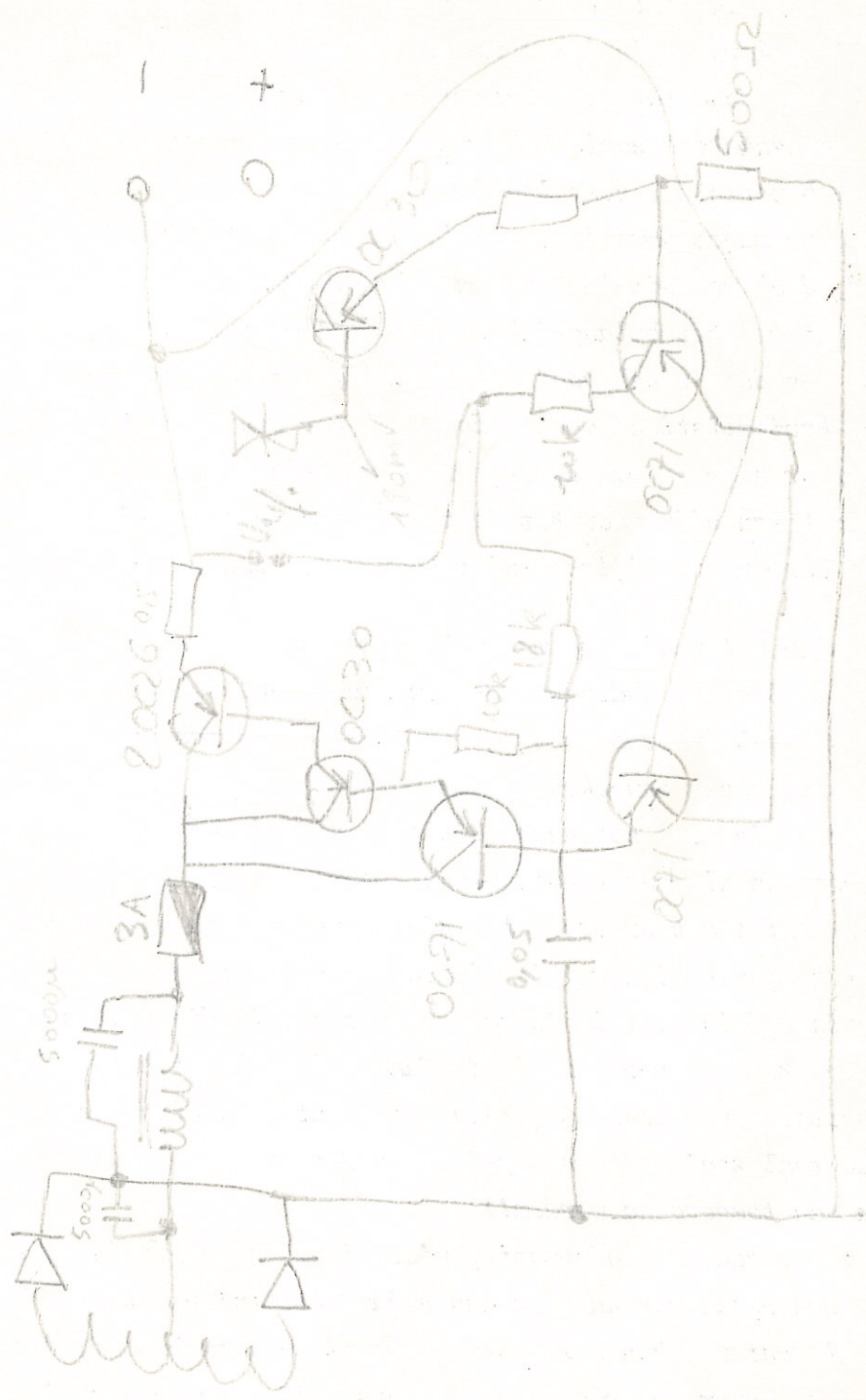
$$U = I \cdot R$$

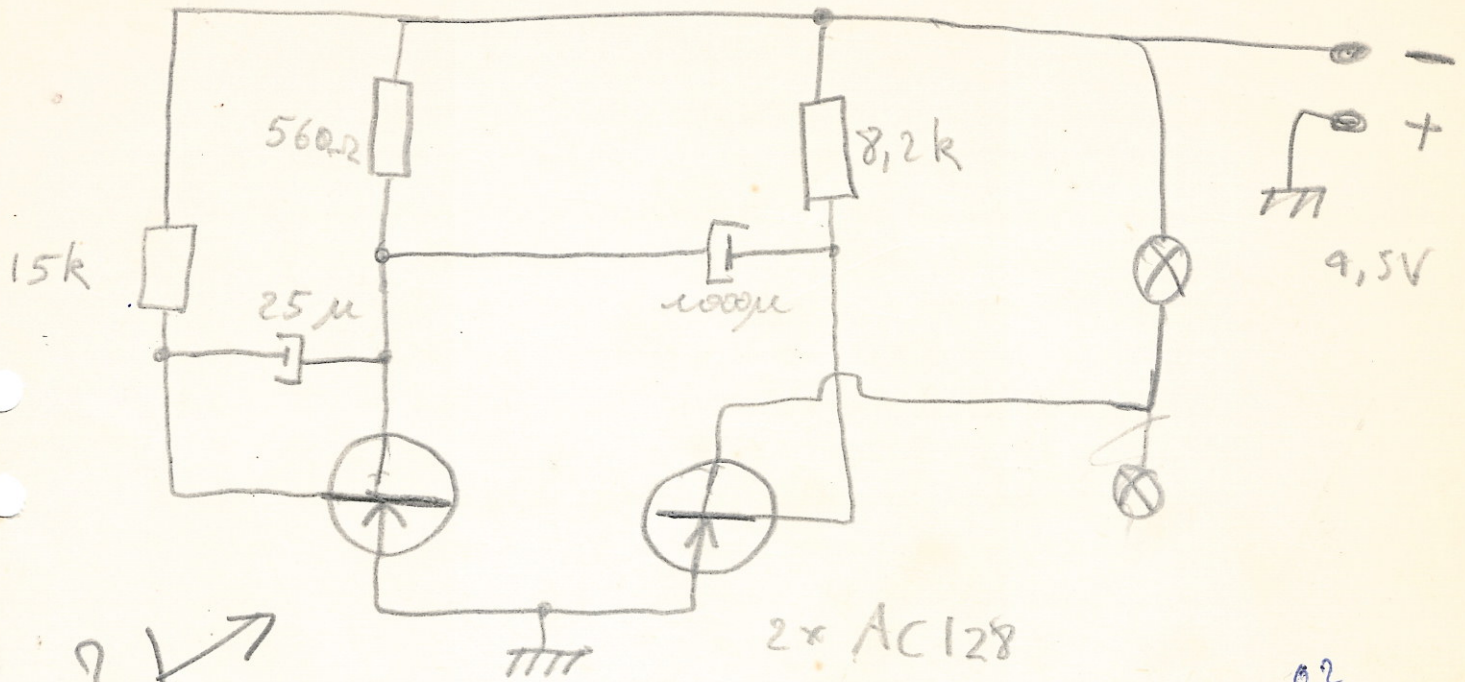
$$300 = 10 \text{ mA} \cdot x$$

$$= 0,01 \text{ A} \cdot x$$

$$x = \frac{300}{0,01 \text{ A}}$$



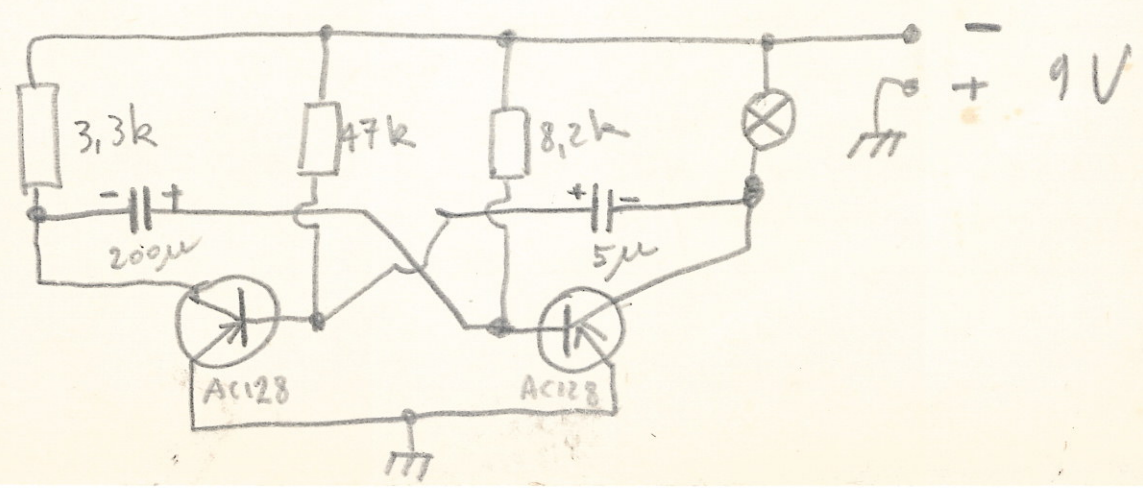
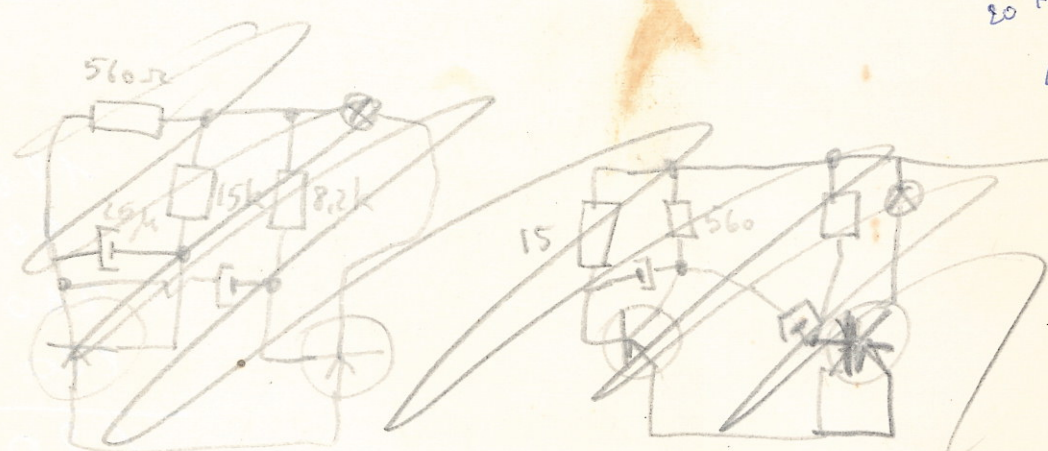




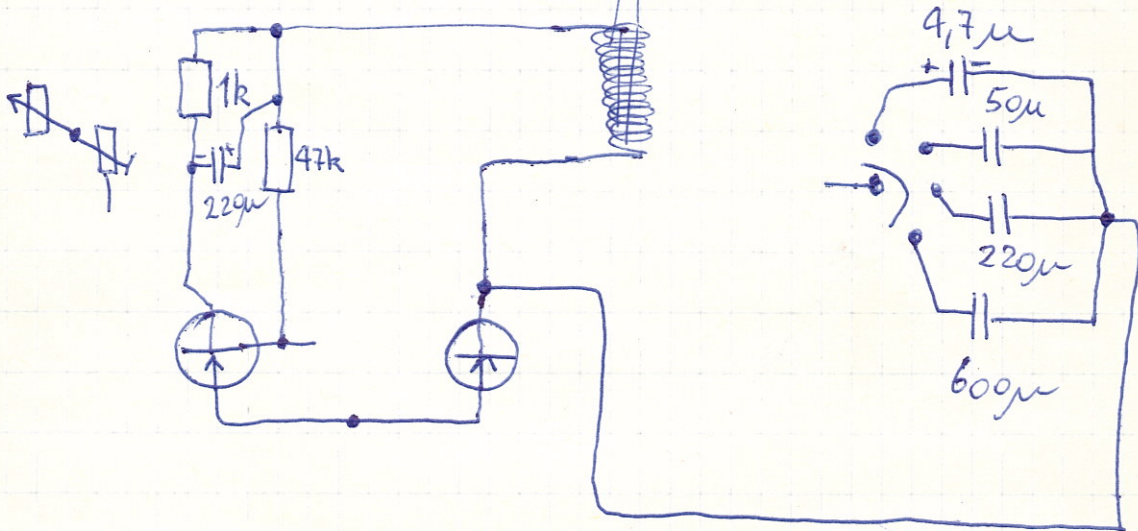
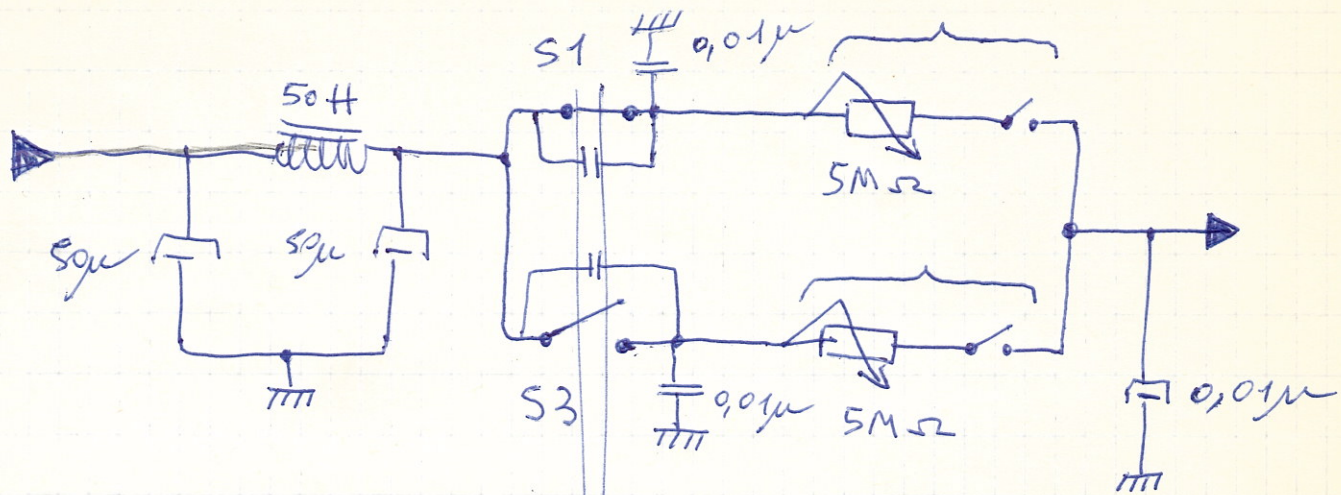
(?) →

2x AC128

0,2
 2052
 20 + 0,2
 40V









600V
in



1971

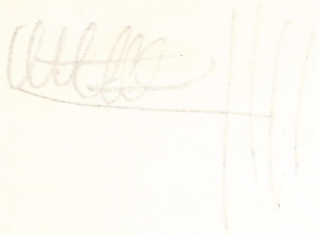
schiedleers

son

	uit	son
S1		
S2		
S3		

Relais

analogisch



$$250 \text{ mA} = 0,25 \text{ A}$$

$$4 \text{ V}$$

$$R = \frac{4}{0,25} = \frac{4}{0,25} = 16 \Omega$$

$$\begin{array}{r} 400 \\ 25 \overline{) 1000} \\ \underline{100} \\ 0 \end{array}$$

$$R =$$

$$I = \frac{4}{20} = 0,2$$

$$200 \text{ mA}$$

analogisch : 200 mA

$$R \leq 20 \Omega$$